

square pattern mercury electroplated white sprayed glass candle jars

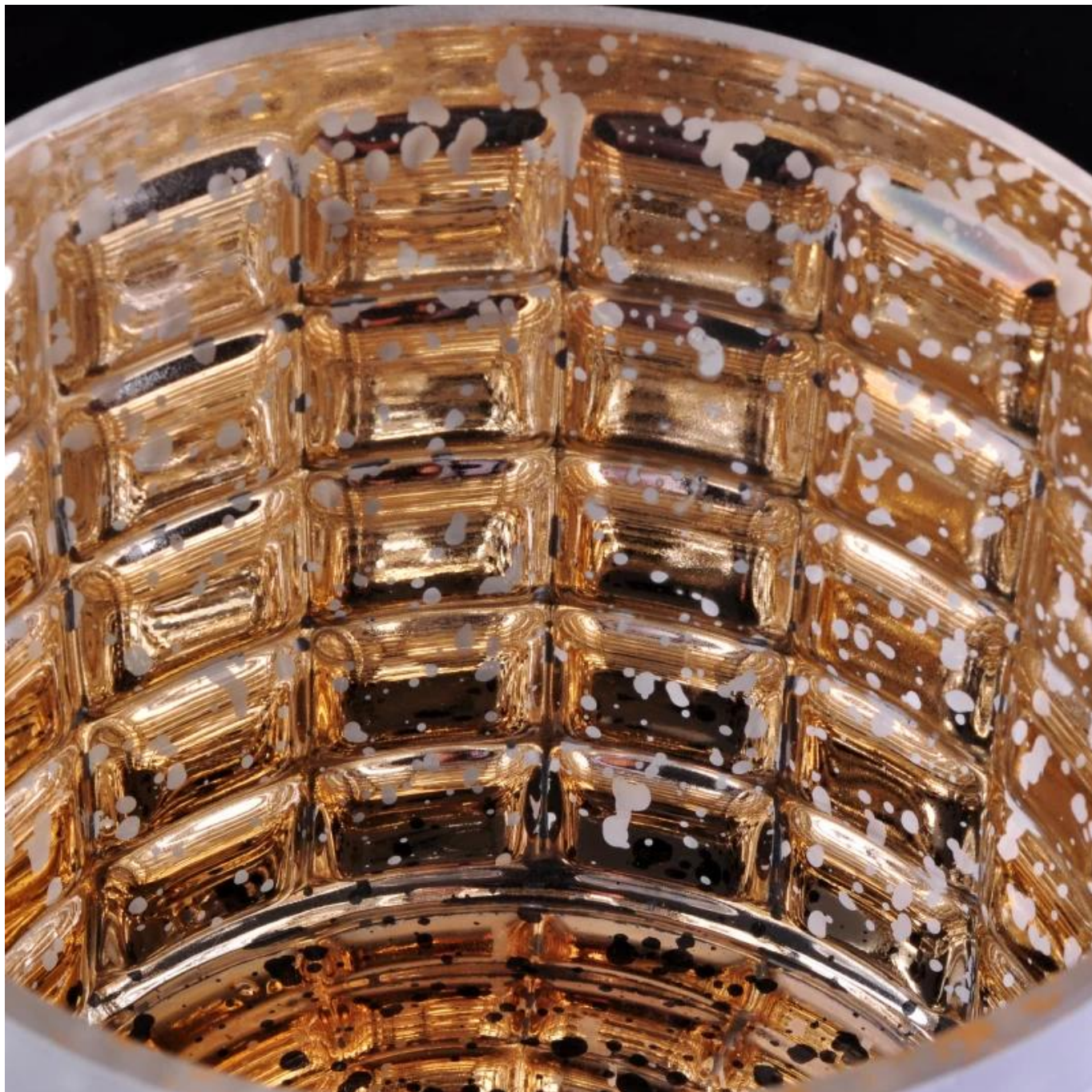
Product Details

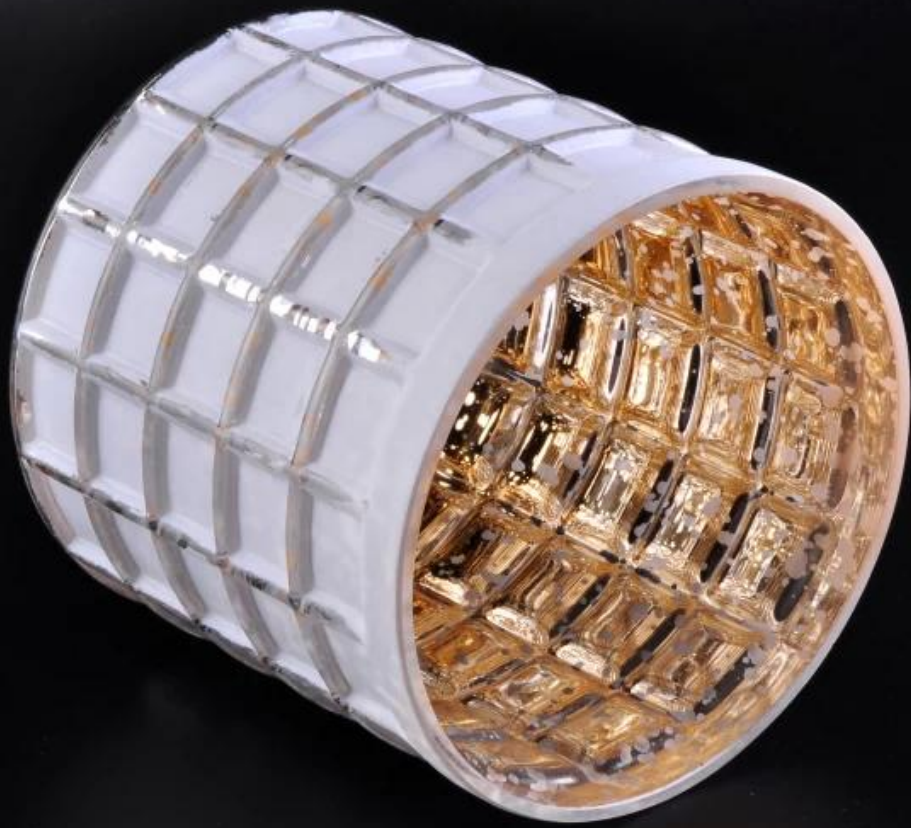
Article number.	SGLYP16101313
Material	Soda Lime Glass
Craft	Hand Made Glass Candle Holder
Samples time	1. 5 days, if the shapes and sizes are existing 2. 15 days, if you need a new shape and size
Packaging	Normal packing 24 or 36pcs in a carton export cardboard partitions
Product Capacity	500,000 ~ 1,000,000 pieces per month
Delivery	Within 35 days after sample approved and order
Payment conditions	30% deposit by T / T in advance and balance against B / L copy
Shipping	By sea, by air, by express and the delivery agent it is acceptable
Product characteristics	1. Suitable for use in the pub, hotel, restaurants, homes, etc. 2. A professional Q / C for quality control 3. Competitive price and quality 4. Know the trials and FDA food
For your choice	1. Any logo printing glass box 2. Any color painted, cold, electroplating, painting laser cutting for finishing 3. Special package as shrink film, color gift box, white gift box, etc. 4. Open a new form of glass, wood, plastic or metal as you like 5. Various sizes and shapes to suit your needs

More Product Pictures



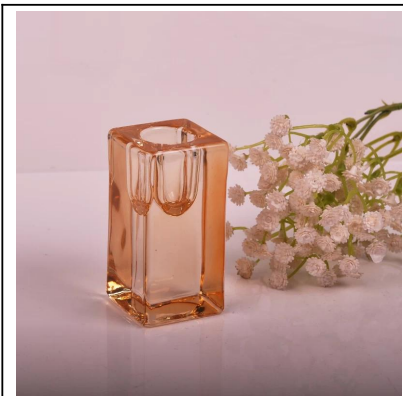








Similar Products Link



Office & Sample Room



Factory Show





The features of month blown glass

1. Its advantage including abundance sculpt, technics, surface effects, color etc.
2. The quality is difficult control and the tolerance of the size, weight and shape are bigger.
3. The price is high and the product is limited for the special technic glass.

Method of application

1. Using it under guide of the adult
2. Washing it with clean or boiling water before usage
3. No touching the rim of glass cup,try to take the bottom or the handle of it

Cautions

1. Beer, red wine, white wine, beverage or hot water not be too full
2. To avoid to hurt your children's hand, please put it in the place where they can't reach
3. Avoid dropping ,Collision and strong impact
4. Not available for microwave oven
5. To prevent it from cracking, do not put it over open fire directly

[**Homepage back**](#)