

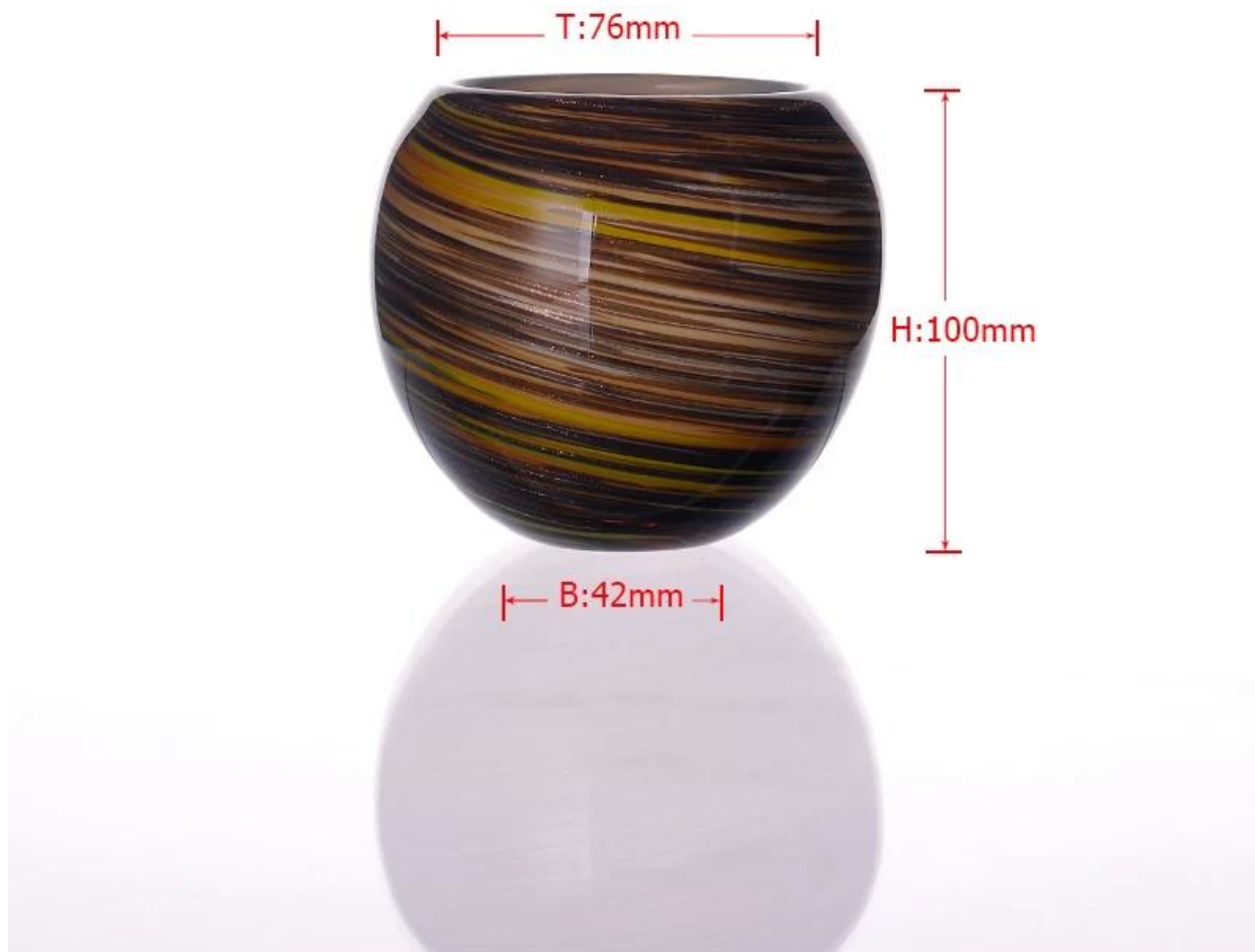
Specifications:

Material	Glass
Color	Transparent glass
Process	Hand made glass
Samples time	1. 5 days if at exit shaped and size of glass. 2. 15 days if need new shape or size of glass.
Packing	Normal packing,24or 36pcs into export carton, carton with cardboard divider
Product Capacity	500,000~1,000,000 pcs per month
Delivery time	Within 35 days after the sample and order confirmed
Payment terms	30% deposit by T/T in advance and the balance against the copy of B/L
Shipment	By sea, by air, by Express and your shipping agent is acceptable
Product Features	1.Unique design 2.Lowest price 3.Highest quality 4.Soonest shipment
For your choices	1. Any logo printing on the glass body. 2.Any color painted ,frost, electro plate, pattern laser carver for the finish; 3. Special package like shrink wrap, color gift box, white gift box etc: 4. Open new mould for the glass, wood, plastic or metal as you like 5. Different size and shapes meet your needs.

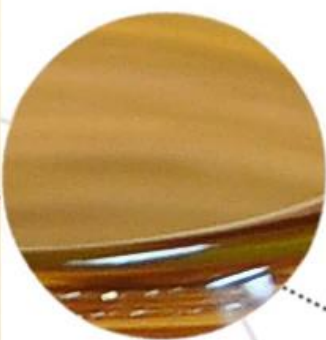
Product features:

- 1.The logo and color is baked in 580 celsuis high temperature,pure&poisonless.
- 2.The mouth of cup is carefully polishes to ensure comfortable for using.
- 3.Carving,gold-rim,decal or embosses craft,handmade,exquisite&elegant.
- 4.Our product could pass the SGS,FDA,BV and LFGB test

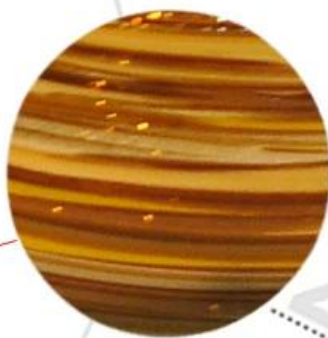
Product Show:



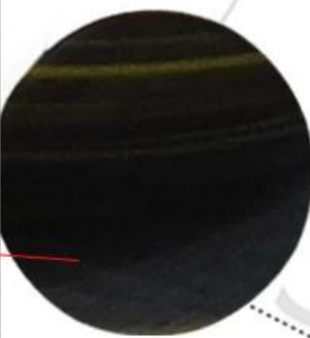




1



2



3



Related product 



mouth blown glass candlestick



new glass candle holder

Company Show:



Factory show:



[FAQ](#)