

frosted 12 oz glass candle vessel

Product Details

Object number.	SGBE19041205
specification	Top dia: 88mm Bottom dia:80mm Height:100mm Weight: 325g Capacity: 410ml Sampling time: 5 ~ 7 days after confirmation
Capacity	395ml
Sampling time	1.5 days if the shape and size of the products exist 2.15 days if you need new shape and size of the products
Packaging	24pcs / 36pcs / 48pcs regular safety packing and so on For export carton with egg divider
MOQ	5000pcs
Delivery time	Within 35 days after the order confirmed
Payment terms	30% deposit by T / T in advance, the balance after showing the copy of B / L
Product features	1. High quality and competitive prices 2. Testing FDA, SGS, LFGB etc. 3.Eco Friendly 4. It is widely aimed at Wedding, party, home, bars etc. 5. Machine made

More Product Pictures

pure white handmade glass candle jar

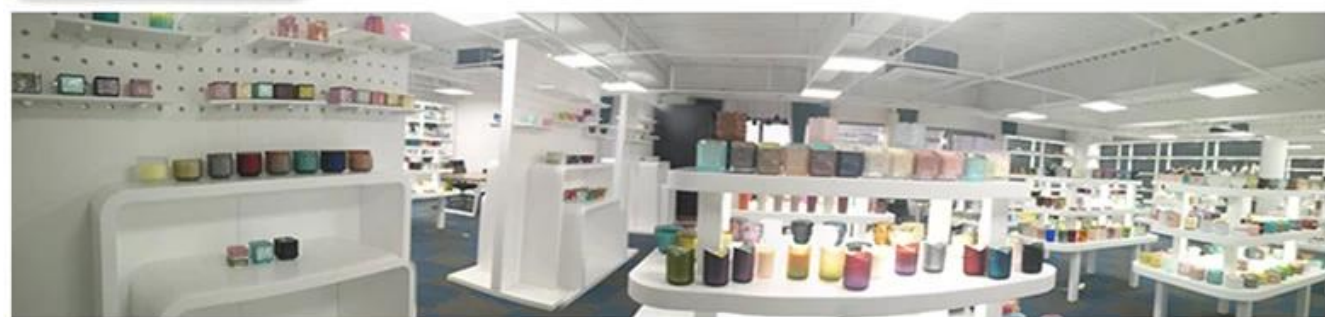






Office & Sample Room





Factory Show



Surface Treatment

10+ production lines



□ Spraying



□ Engraving



□ Electroplating



□ Silk-screen



- Spraying
- Engraving
- Electroplating
- Silk-Screen

