


# different types ion plating of candle holders

 Product Details	
Item No.	Item NO.:SGLYP17042205 Top dia:126mm Bottom dia:126mm Height:126mm Weight:614g Capacity:1225ml Material: high white Glass Craft: Machine made Sample time: 5~7 days after confirmed Packaging: safety packing by 48 pcs per carton MOQ:10000pcs
MOQ	10000pcs
Accessories	cap, ceramic/metal/wood lid, wax, wick, shear etc
Finish	decals, color coating, mercury, laser, frosted, plating, glazed etc.
Packing	1. 24/36/48/72 pcs per standard export packing carton 2. Color/white/brown box packing 3. Luxury gift box packing 4. Shrinking packing 5. Individual/set box packing 6. Customized packing 1. We are the professional <a href="#">candle holder</a> manufacturer, major in different kinds of <a href="#">candle holders</a> , ranging from <a href="#">glass candle holder</a> , <a href="#">ceramic candle holder</a> , <a href="#">marble candle holder</a> , <a href="#">Concrete candle holder</a> , <a href="#">Tin candle holder</a> , <a href="#">Stainless candle jar</a> etc. 2. Perfect for home/store/super market/restaurant/hotel/bar/KTV etc.
Our strength	3. With professional designer team, which can help design and open new mould based on your requirement. 4. Post processing: color coating, plating, mercury, iridescent, engraving, printing, decal, spray color, frosty, gold plating, hand-drawing etc. 5. Small MOQ is acceptable. We have regular products for supporting you.
Our service	* Reply you within 24 hours * Ranges of products for your selections * Completely production system * Skilled factory workers * Both machine line and handmade line for your service * Experienced QC team inspect the products comprehensively and strictly according to AQL standard * Creative designer innovate newly products over 15 styles monthly * Professional Logistic department supply to door service

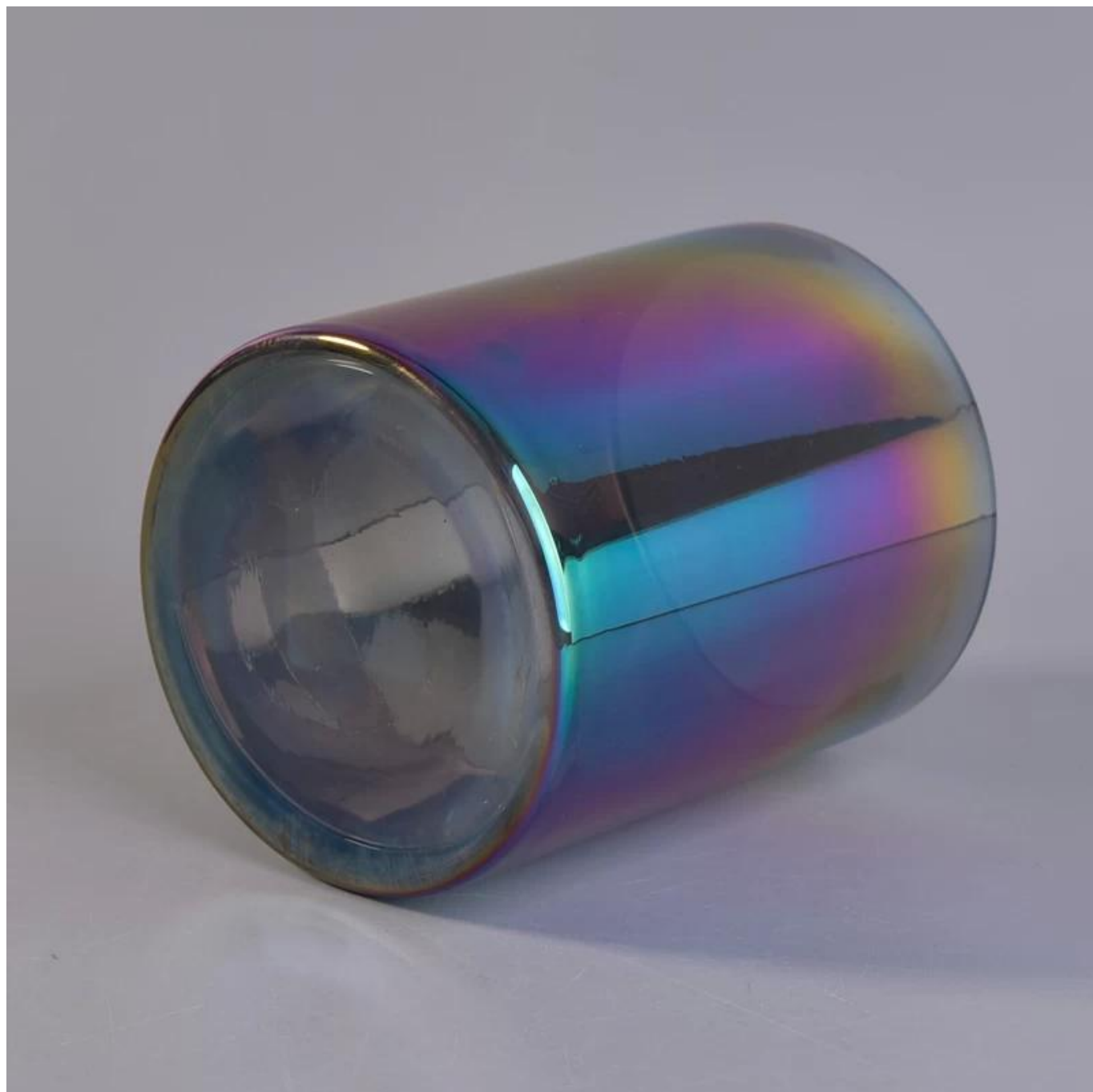
#### What we can do

1. Machine blasted /pressed, elegant pattern, widely use in restaurant/hotel/home/party etc.
- 2)Special design and accurate quality control make sure every piece offered is as perfect as possible.
- 3)Logo customized, pattern, size and color etc. could be done according to your drawings. -Decal, Carving, electro plating, sand blasting, paint spraying, etc.
- 4)OEM machining Wax pouring, Essential oil
- 5)Packing : PVC box,Windows box, color box, shrinkage wrap are available to make sure it be can sold directly.  
Customized paper box.Standard export packing assure safety shipment.
- 6)Timely delivery, 12000 square meter self-own warehouse holding large stock to enable our supply.
- 7)Eco-Friendly, pass FDA, CA65,LFGB standard test.



More Product Pictures







More reference

	In stock now		
SGJD8090		TOP: 80mm HEIGHT: 90mm CAPACITY: 300ml	1K MOQ
SGJD88100		TOP: 88mm HEIGHT: 100mm CAPACITY: 400ml WEIGHT: 340g	1K MOQ
SGJB7080		TOP: 70mm BOTTOM: 64mm HEIGHT: 84mm CAPACITY: 220ml WEIGHT: 200g	1K MOQ



Item No: SJSD12183  
 Top diameter: 63mm  
 Bottom diameter: 63mm  
 Height: 138mm  
 Weight: 220g  
 Capacity: 330ml  
 In stock

Pictures	Item No.	Size(T:/B:/H:)	Capacity	Weight
		(mm/mm/mm)	ml	g
 <p>NO: 310D W: 270g T: 56mm B: 139mm H: 59mm</p>	SGJB310D	60X59X139mm	/	270g
 <p>NO: 1012 W: 200g T: 65mm B: 153mm H: 58mm</p>	SGJB1012	65X58X153mm	/	309g

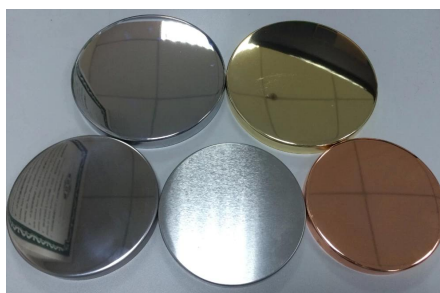
Contact Kate:

Skype: sunnyglassware033

Mobile(What's app ID): + 86 137 1381 4226

E-mail: sales35@sunnyglassware.com

Matched accessories:



Office & Sample Room

Sunny Glassware is a leading candle holders supplier in China since 1992, our glass/ceramic/concrete candle jars etc. and matched accessories mainly export to USA, EU, AU over more than 24 years experience. We're strictly with the quality, our QC team inspect the



products

from raw material to production then to packing step by step, the inspection strictly according to the AQL standard.

**Our service as following:**

- > Different shapes and sizes available, also welcome your own design.
- > Accessories: cap, glass/metal/wood lid, wax etc.
- > Decoration: decal, color coating, mercury, laser, frosted, plating etc.
- > Packing: normal safety packing, color/white/gift box packing, customized packing available.
- > Design power: more than 15 innovations monthly.
- > QC team: over 10 professional staffs inspect the production strictly and comprehensively, which meet AQL standard.
- > Sample: within 7 days
- > Certification: ASTM, 100% lead& cadmium free.

**Our Facotry:**





**Our Team:**



**Our Showroom:**



**Certificate:**



[illegible]