

wholesale empty concrete candle vessel for candle making

---

Sunny Glassware not only produces OEM / ODM orders, but also helps many brands start from the product concept.



- **26 Years Experience**  
export to over 30 countries and regions
- **Fast Quantity and Launch-  
ed Speed**  
speed can be compared with Zara
- **Award-winning Design Team**  
won the trust of many upscale brands

**Why choose sunshine?**

---



### Major advantage

- . Focus on luxury design
- . About 80% of American perfume brand suppliers
- . AQL plus 6 strict rigorous QC test standards
- . Maintain quality and sample and bulk products

### Flexible size design can be expanded quickly Your market

Top DIA.: 96 mm  
Bottom diameter: 96mm  
Height: 105mm.  
Capacity: 460ml.  
Weight: 430g

We translate your ideas into creative spices products, we sell yourself in the local market.



### feature of product

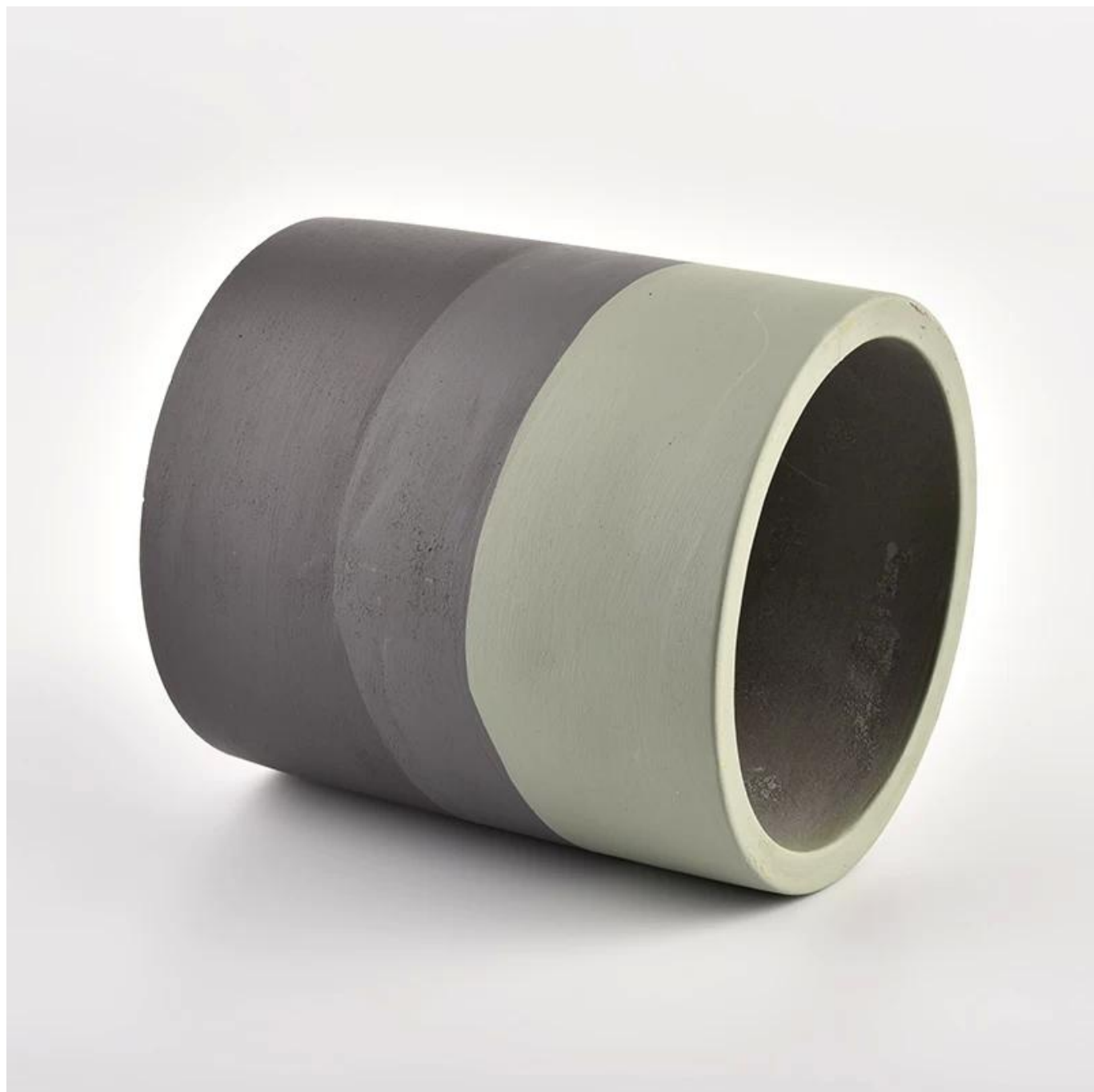


1. High quality home decorative glass incense bottle.
2. Applicable to hotel, wedding, etc.
3. Meet the function of ASTM test products.

### Let you choose

1. Various drawings and sizes are available.
2. Any painted, cutting, plating, laser model processing tool.
3. Shrink film, color gift box, white gift box and other special packaging. We have a quality control committee.
5. We have seminars and professional warehouses to ensure delivery time.







## ACCESSORIES SHOWS



Wooden Lid



Cork Lid



Zinc Alloy Cover



Wick Trimmer Cutter

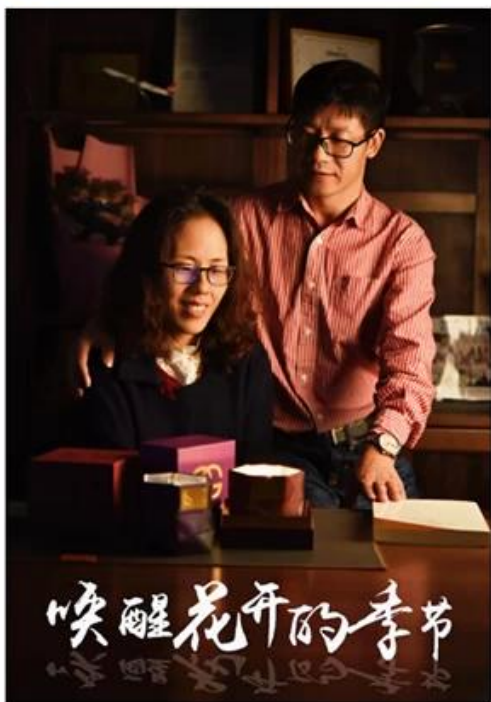
- . Decorative dinner in the bar or bar
- . Suitable for families, hotels or gardens
- . Special lover gift
- . Any chance of decoration





## Story story.

### Company Profile



**Sunny Glassware** was established by Frank and Alice for more than 25 years, which provide a leading excellent combination between prices, quality & responsiveness in glassware industry.

Sunny keep engaged in glassware designing and manufacturing, there are more than 10 product lines available from hand blown craft to machine pressed, machine blown and IS machine made etc., and various kinds of deep processing technologies can be customized such as color sprayed, laser printing, decal print, electroplate, frosted, screen printing, sandblasted and ion plating etc. **ISO 9001:2008/2015, Enterprise Intellectual Property and Green & Social Compliance Statement** certificates were issued by the third-party certification companies.

There are about 5,000 items which cover all daily-used glassware and ceramic ware, e.g. candle holders, borosilicate glass, bottles, tumblers, jars, stemware, tableware & drinkware, bathroom accessories etc. The products can meet **FDA, LFGB, CA 65, ASTM, dishwasher test**.

With a strictly control system on product quality and customer service, our exporting market have expanded rapidly to North & South America, Europe, Oceania and Asia.

Our business scopes are mainly involved in home decor, gift crafts and tableware. There are **approximately 80% candle holders in USA luxury branded companies** were imported from Sunny Glassware.



## What are we there?

The SUNNY GLATWARES approved the ISO 90012008/2015 quality management system certification, and implemented the company's intellectual property standards to protect the interests of its customers.



ISO 9001: 2015



Enterprise intellectual property



Patent Number:  
201630655323.4

# DEEP PROCESSING



Electroplating



Solid color glaze



Hand painting



Decal Printing



Stamping



Transmutation glaze



Screen Printing



Water Transfer Printing



## Sample of room display

Welcome to the Shenzhen office to find your favorite, it will surprise you, because it is difficult to find another supplier in China.





**pack&transportation**

---

# PACKAGING & SHIPPING



# ADVANTAGE

---



1.OEM/ODM

---

2.High Quqlity and Competitive Price

---

3.After-sale service



# FAQ

Q1: Do you accept small order?

Yes, any quantity would be acceptable if we have stocks.

Q2: Do you have any other colors/sizes for this kind of jar?

Any colors can be customized according to pantone number or your sample, the we have some hot sale regular sizes for you to choose, if you want to make new sizes we can also open new molds.

Q3: What kind of lids you can offer?

We can provide lids in different materials like glass, ceramic, metal, wood, concrete and plastic ect.

Q4: Do you have certification for your products?

Yes, for the glassware, have ASTM. CA65 test , FDA etc.

Q5: Do you accept Third party inspection?

Yes,we accept it.It's the normal way for many clients.

Q6: How to ensure the production quality is what I need?

We will do the production and inspect the goods by sample we both approved. If you have more requirement for the product quality,we should discuss the quality standard before we place the order.

Q7: How could I get a sample?

We offer free samples for those we keep in stock, for custom samples we need 7~10 to get samples ready. Sample fee could be pay by Paypal, Alibaba, or bank.

Q8: What's your MOQ of ceramic jars?

The moq of a single order is 3000 pcs, 1000 pcs each color is acceptable

Q9: Why your sample cost is so expensive?

Sample cost is mainly for labor cost, it is not equal to unit price.

Q10: Could you arrange shipment for us together?

Yes, we can. We have a professional logistics department which help many of our customers handle shippments, if you need we arrange shipping, please tell us your company or warehouse address and we can quote DDU price to you check together

