

Transmutation glaze ceramic candle container with lids

Product Details

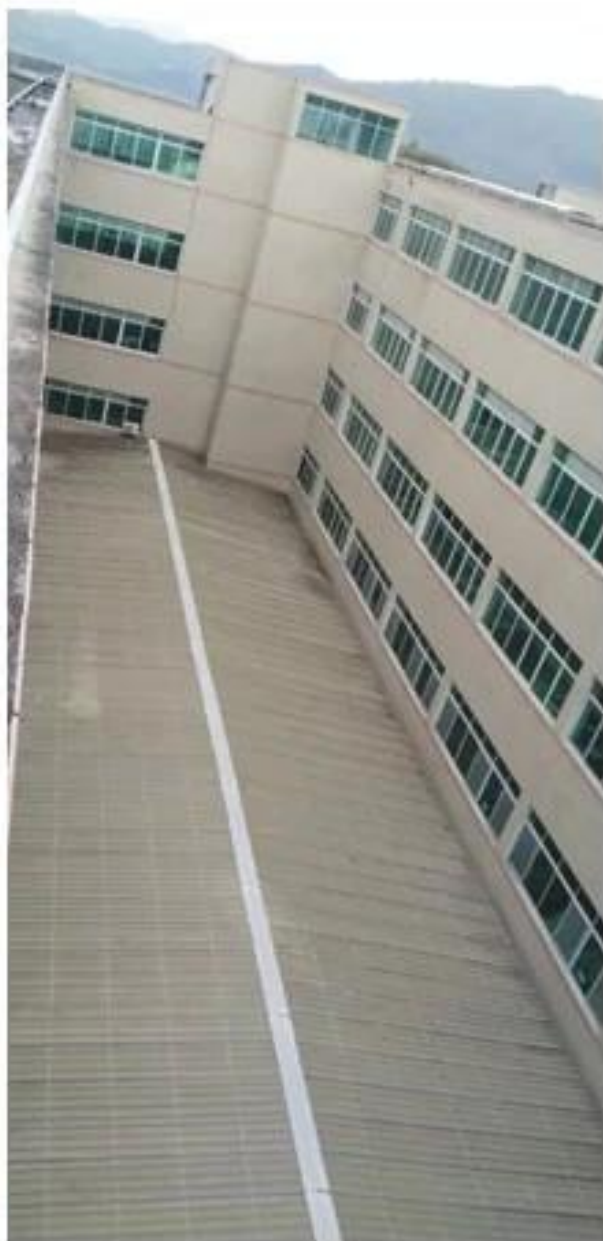
Item No.	SGWQ17061208
Sizes	Lid: Dia: 125mm Height: 42mm Weight: 195g Jar: Top dia: 120mm Bottom dia: 93mm Height: 66mm Weight: 365g Capacity: 490ml
Product material	Transmutation glaze ceramic candle container with lids
Accessories	candle caps, candle ceramic/metal/wood lid, wax, wick, shear etc
Deep processing	deca printing, color coating, mercury, laser, frosted, plating, glazed, electroplating etc.
Other related products	1. 24/36/48/72 pcs per standard export packing carton 2. Color/white/brown box packing for candles 3. Luxury candle gift box packing 4. Shrinking candle packing 5. Individual/set candle box packing 6. Customized candle box packing
OEM/ODM Design	1. We are the professional candle holders manufacturer, major in different kinds of candle holders , ranging are covering glass candle jars , ceramic candle holders , marble candle holder , Concrete candle holder , Tin candle holder , Stainless candle jar etc. 2. All candles are perfect for home/store/super market/restaurant/hotel/bar etc. 3. With professional designer team, which can help design and open mind to give you more ideas to create special products 4. Post processing: color coating, plating, mercury, iridescent, engraving, printing, decal, spray color, frosty, gold plating, electroplating, hand-drawing etc. 5. Small MOQ is acceptable. We have regular products for supporting you.
Professional Services	* Reply you within 24 hours * Ranges of products for your selections * Completely production system * Skilled factory workers * Both machine line and handmade line for different products * Experienced QC team inspect the products comprehensively and strictly by AQL standard * Creative designer innovate newly products over 15 styles monthly * Professional Logistic department supply door to door service







Sunny Facotry:



Ceramic Production:





Sunny Team :



Sales Team



Sourcing&Doc Team



Customer Services



Product Designer

Certificate:



For more [ceramic candle holder](#) or any glassware,
please visit our website: <http://www.okcandle.com/>
Or, can help you learn more about us: [FAQ](#)