

Suppliers Custom logo luxury ceramic candle vessel jar



Superior Products Quality

Sunny demolished 80,000pcs candle holders without visible blemish



QC Extra Six Steps

No major quality complaints for 9 years

80% Candler Jars Exclusive Supplier

including Nest Fragrance, Candle Lite,
UGG etc popular brands



Process Crafts

DEEP PROCESSING



////////////////////



SUNNY

////////////////////

Product Details

Ceremony design awareness

- . Won the "Made in China" award
- . Received a very admirable NEST fragrance
- . Friend or business relationship gift
- . Relaxation and romantic life



Flexible size design allows your market to grow rapidly

Item No.:SGXYT20061006

Top dia: 88mm

Bottom dia: 88mm

Height: 100mm

Weight: 390g

Capacity: 400ml

Custom designs and different sizes available

With our strong support, our customers are growing rapidly, from small labs to industry leaders.







Packing & Shipping

Different From The Peer

Own professional shipping company(Shenzhen Sunny Worldwide logistics)



20+ years freight history and WCA members.



PACKING



Gift box



Carton



Pallet

We have Normal packing,PVC box,Window box,carton box,pallet
Color box,White box,ect.
of course,we can customize Individual gift box for you.



Wooden case

Office & Sample Room

We purchased an international office of 1,800 square meters in Shenzhen.

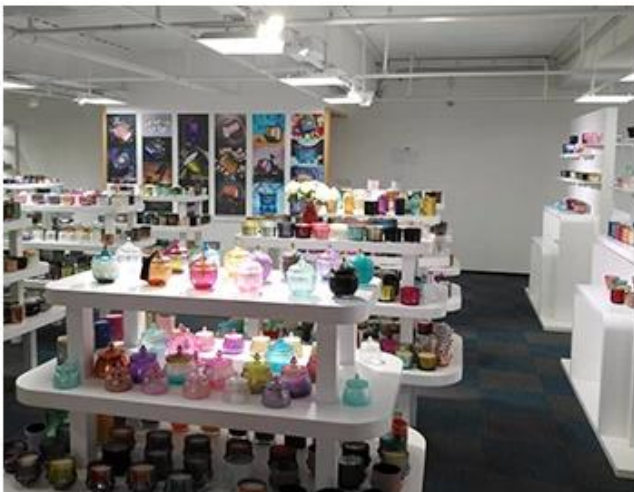


Sample room display

Meiyang Glass provides more than just **Shenzhen sample room has 5000 pieces** A wide range of options. He won a big card [Customer Reviews](#). Welcome to the Shenzhen office! The image is as follows **Just part of our design candle holders** Welcome to the Shenzhen office to find your favorite, it will bring you a lot of surprises, because it is difficult to find such another supplier in China.

SAMPLE ROOM

There are more than 5000 products in
sample room of Sunny Glassware
for your reference. No second Co. in China!



Factory Show

Below are pictures of major online transactions. For more factory information, please see: [Factory tour](#)

FACTORY

There are about 20000 square meters in our factory
which was built in 1992 year;
Superior quality and high efficiency
can be guranteed.



[Our certificate](#)

CERTIFICATIONS

