

Round bottom glass candle holders with spraying color

Product Details

Element name	Round bottom glass candle holders with spraying color
Item number	SGJD19042401
Cut it	Top diameter: 70mm Bottom diameter: 55mm Height: 80mm Maximum diameter: 120mm Weight: 355 g Capacity: 395 ml Sampling time: 5 ~ 7 days after confirmation Other sizes: 5oz / 8oz / 10oz / 16oz. Are also available
Capacity	10oz 14oz 16oz etc. It's available
Sampling time	1.5 days if the shape and size of the products exist 2.15 days if you need new shape and size of products
package	24pcs / 36pcs / 48pcs regular security packing etc. For export carton with egg divider
MOQ	5000pcs
Delivery time	Within 35 days after the confirmed order
Payment terms	30% deposit by T / T in advance, the balance after showing the copy of B / L
Product features	1. High quality and competitive prices 2. FDA, SGS, LFGB test etc. 3. Eco friendly 4. It is largely focused on weddings, parties, homes, bars, etc. 5. machine made glass candle holders

More Product Pictures

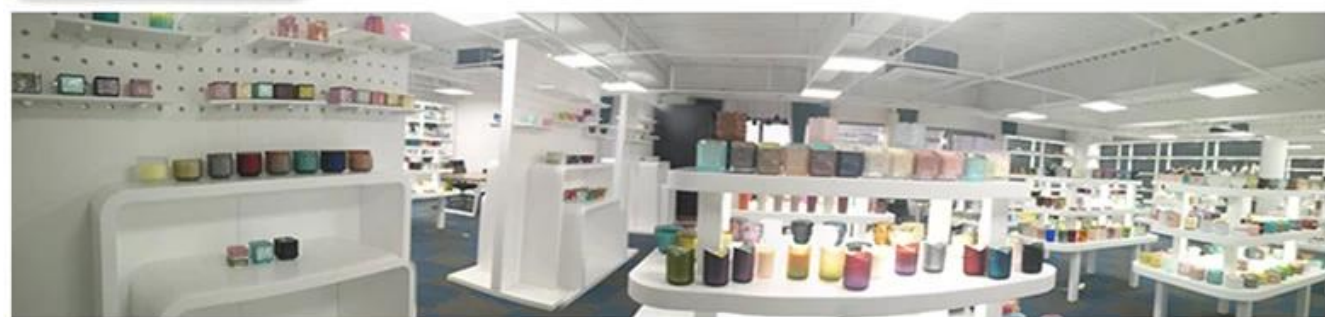






Office & Sample Room





Factory Show



Surface Treatment

10+ production lines



□ Spraying



□ Engraving



□ Electroplating



□ Silk-screen



- Spraying
- Engraving
- Electroplating
- Silk-Screen



The characteristics of blown glass per month

1. Its advantage including abundance sculpture, techniques, surface effects, color etc.
2. Quality is a difficult control and the tolerance of dimensions, weight and shape is greater.
3. The price is high and the product is limited for special technical glass.

Application method

1. Using it under the guidance of the adult
2. Wash it with clean or warm water before use
3. Do not touch the edge of the glass cup, try to take the bottom or the handle of it

Precautions

1. Beer, red wine, white wine, drink or hot water should not be too full
2. To avoid hurting your children's hands, please put them where they cannot reach
3. Avoid falls, collisions and strong impacts
4. Not available for the microwave oven
5. To prevent it from breaking, do not place it directly on the fire

For more [candle holder](#) or any glass,

Please visit our website: <http://www.okcandle.com/>

Or here can help you know better than us: [FAQ](#)

[We await your request and cooperation.](#)

[Homepage back](#)