

Pink tall container glass votive candle holder with leave pattern

Product Details

Item No.	SGLYP16112307
Material	High white glass material
Process	machine made candle holder glass
Samples time	1. 5 days if at exist shaped and size of candle holder glass 2. 15 days if need new shape or size of candle holder glass
Packing	Normal packing,4 pcs into inner box, 48 pcs per carton
Product Capacity	500,000~1,000,000 pcs per month
Delivery time	Within 35 days after the sample and order confirmed
Payment terms	30% deposit by T/T in advance and the balance against the copy of B/L
Shipment	By sea, by air, by Express and your shipping agent is acceptable 1. Machine made votive glass candles jar with high quality
Product Features	2. Suitable for used in hotel, home, etc. 3. It is eco-friendly 4. Meet ASMT test
For your choices	1. Different designs and sizes for choice 2. Any color painted, frost, electroplate, pattern laser carver processing 3. Special package like shrink wrap, color gift box, white gift box etc. 4. We have exclusive workers for quality control 5. We have professional workshop and warehouse to ensure the delivery time

More Product Pictures

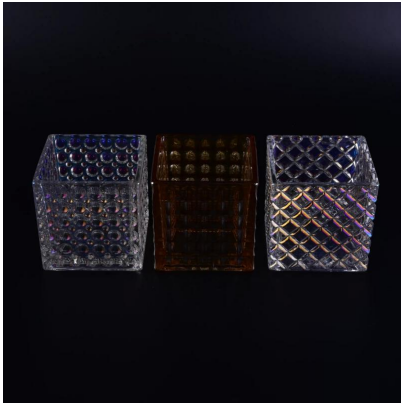








[Similar Products Link](#)



Office & Sample Room



Factory Show





For more [candle holder](#) or any glassware,
please visit our website: <http://www.okcandle.com/>
Or here may help you know more about us: [FAQ](#)