

New arrival triangle shape decorative ceramic candle vessels

Product Details

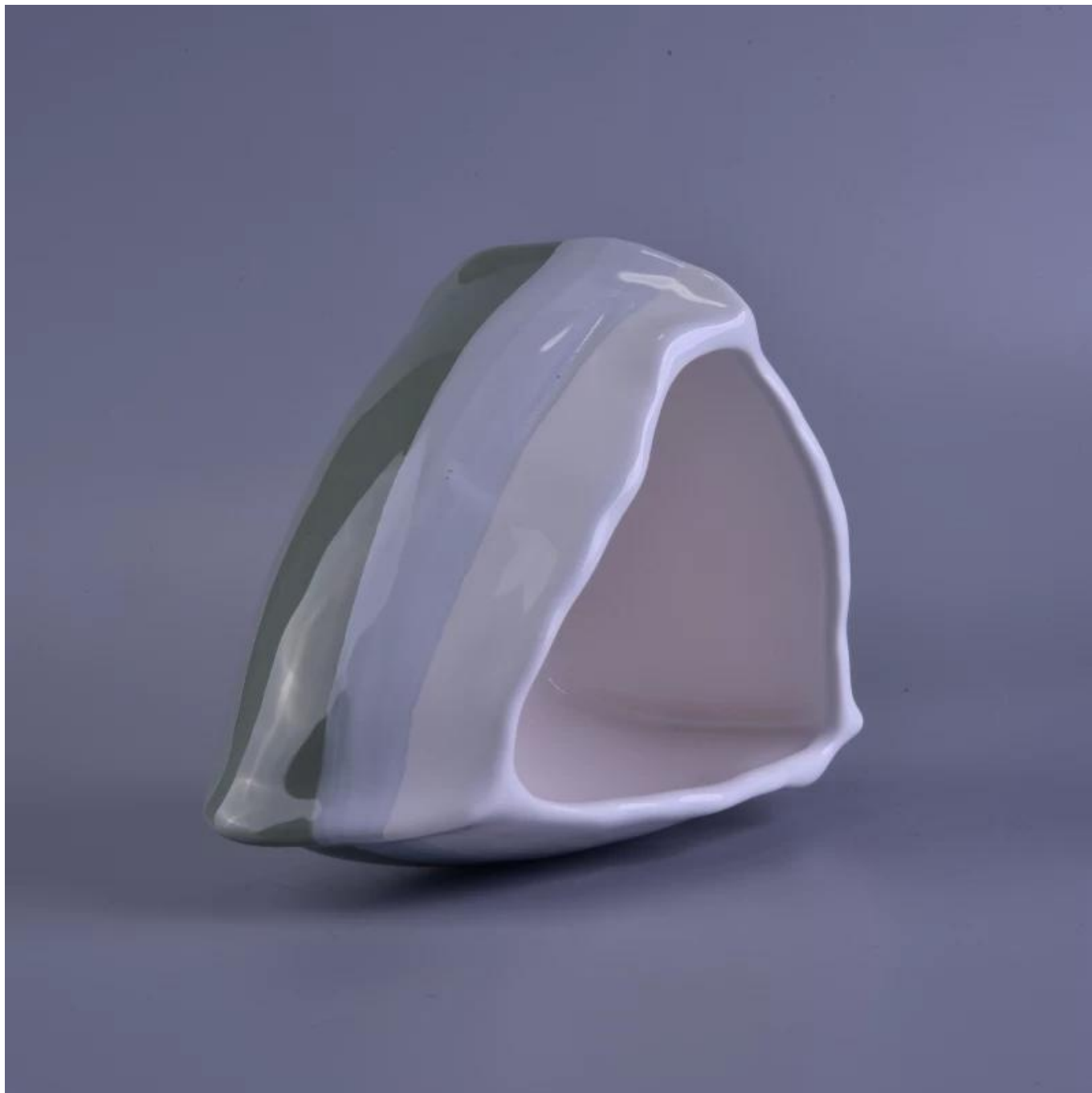
Item Name	New arrival triangle shape decorative ceramic candle vessels
Item No.	SGZY16112303
Size	Top dia:15x12cm Bottom dia:13x11cm Height: 9.8 cm Weight 364g Capacity: 750 ml About fills 200Z Wax
Brand name	Custom
Sample time	1. 5 days to exist in the shape and size of the products 2. 15 days if you need new shape and size of products
Packing	Security packaging normal 24pcs / 36pcs / 48pcs per carton etc. export with egg divider
Moq	5,000pcs
Delivery time	Within 35 days after order confirmed
Payment terms	30% deposit by T / T in advance, the balance after showing the copy of B / L
Product Feature	1.High quality and competitive prices 2.Meet FDA, SGS, LFGB test etc. 3.Eco-friendly 4.Widely applies to wedding, party, house, bar etc. 5.Machine made

More Product Pictures









[Similar Products Link](#)



[Cylinder tealight candle holder](#)

[Round small tealight holder](#)

[Flower shape cylinder jade amber color decorative glass candle jar candle holder](#)

Office & Sample Room



Factory Show





The features of month blown glass

1. Its advantage including abundance sculpt, technics, surface effects, color etc.
2. The quality is difficult control and the tolerance of the size, weight and shape are bigger.
3. The price is high and the product is limited for the special technic glass.

For more [candle holder](#) or any glassware,

please visit our website: <http://www.okcandle.com/>

Or here may help you know more about us: [FAQ](#)

[We are looking forward your inquiry and cooperation.](#)

[**Homepage back**](#)