

New Arrival Glass Candle Jar Wholesale

Product Details

Element name	New Arrival Glass Candle Jar Wholesale
Object number.	SGHY19052810
Specification	<p>Top dia: 74.6mm Bottom dia: 56mm Height: 108.5mm Weight: 387g Capacity: 285ml</p> <p>Top dia: 74.6mm Bottom dia: 56mm Height: 89.6mm Weight: 276g Capacity: 251ml</p> <p>Material: high white glass Manufacturing: machine made Sampling time: 5 ~ 7 days after confirmation</p> <p>Other sizes: 5 ounces / 8 ounces / 10 ounces / 16 ounces are also available</p>
Capacity	10oz 14oz 16oz etc. It's available
Sampling time	<p>1.5 days if the shape and size of the products exist</p> <p>2.15 days if you need new shape and size of the products</p>
Packaging	24pcs / 36pcs / 48pcs regular safety packing and so on For export carton with egg divider
MOQ	5000pcs
Delivery time	Within 35 days after the order confirmed
Payment terms	30% deposit by T / T in advance, the balance after showing the copy of B / L
Product features	<p>1. High quality and competitive prices</p> <p>2. Testing FDA, SGS, LFGB etc.</p> <p>3. Eco Friendly</p> <p>4. It is widely aimed at Wedding, party, home, bars etc.</p> <p>5. Machine made</p>

More Product Pictures

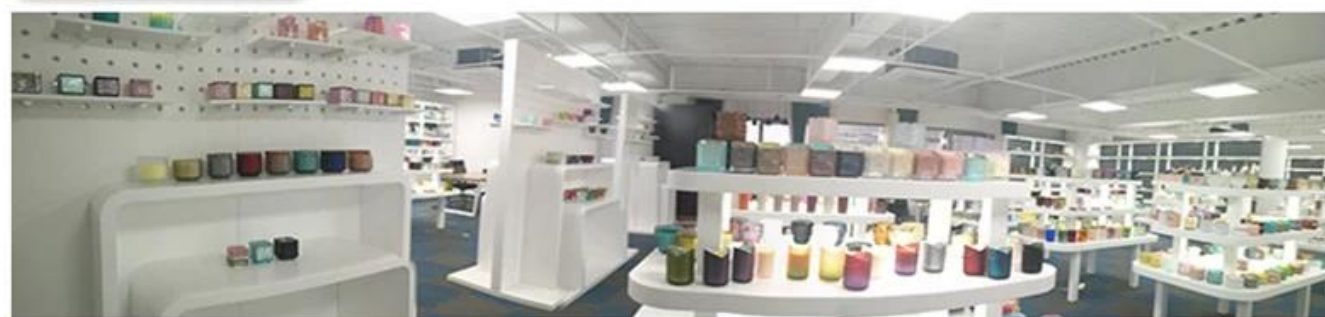






Office & Sample Room





Factory Show



Surface Treatment

10+ production lines



□ Spraying



□ Engraving



□ Electroplating



□ Silk-screen



- Spraying
- Engraving
- Electroplating
- Silk-Screen



The characteristics of the blown glass a month

1. Its advantage including sculpture of abundance, techniques, surface effects, color etc.
2. Quality is a difficult check and tolerance of size, weight and shape is greater.
3. The price is high and the product is limited for special technical glass.

Application method

1. Using it under the guidance of the adult
2. Wash it with clean or hot water before use
3. Do not touch the edge of the glass cup, try taking the bottom or the handle of it

Precautions

1. Beer, red wine, white wine, drink or hot water should not be too full
2. To avoid hurting your children's hand, please put them where they can not reach
3. Avoid falls, collision and strong impact
4. Not available for microwave oven
5. To prevent it from breaking, do not put it directly on the fire

For more [candle holder](#) or any glass,

Please visit our website: <http://www.okcandle.com/>

Or here it can help you know better than us: [FAQ](#)

[We await your request and cooperation.](#)

[Homepage back](#)