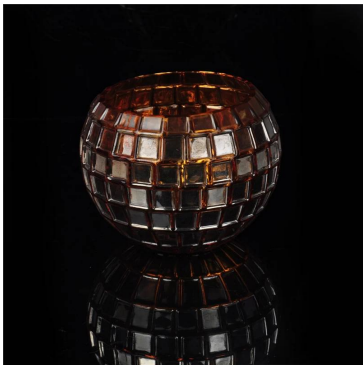
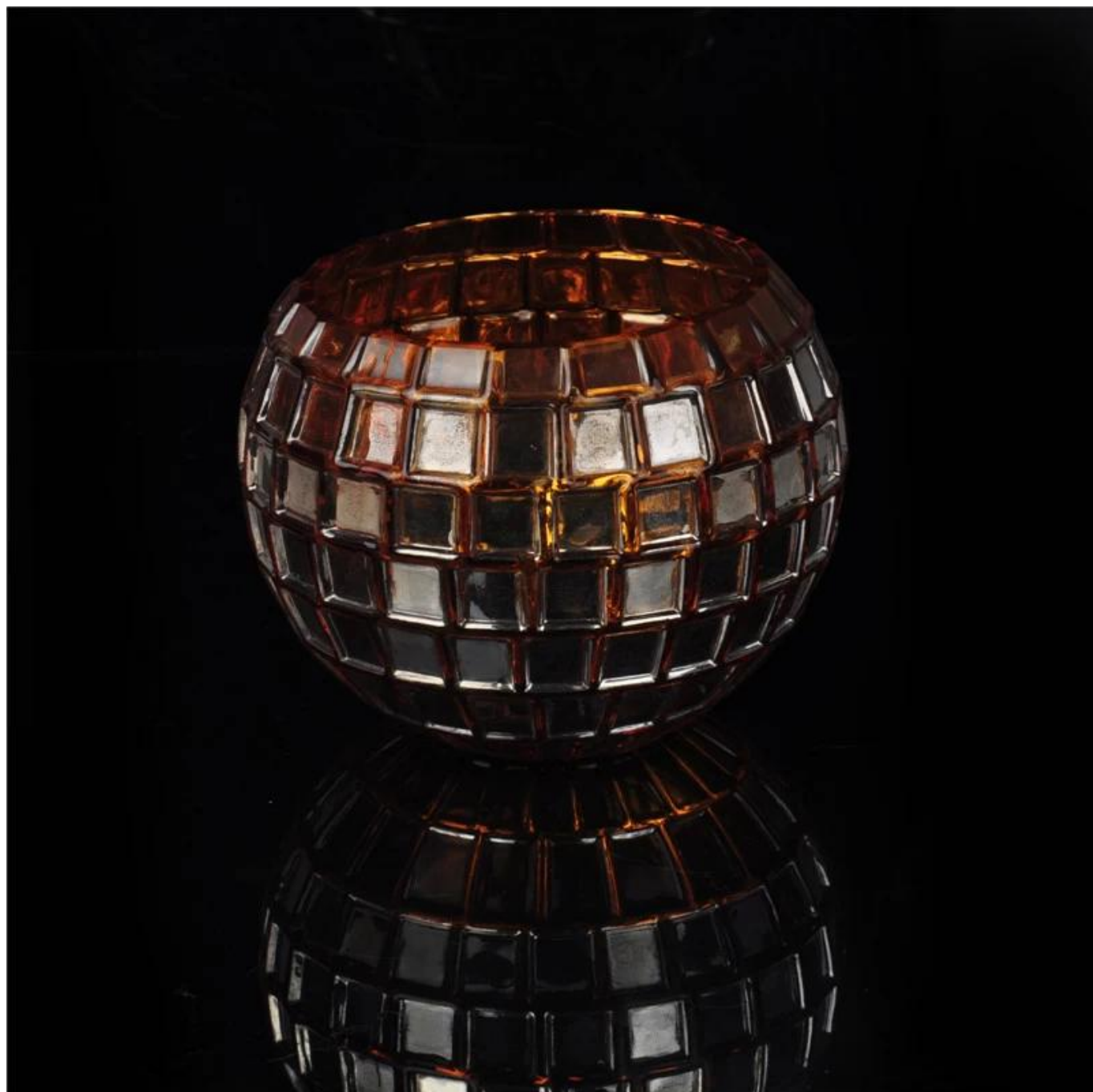


Mosaic votive glass candle jar

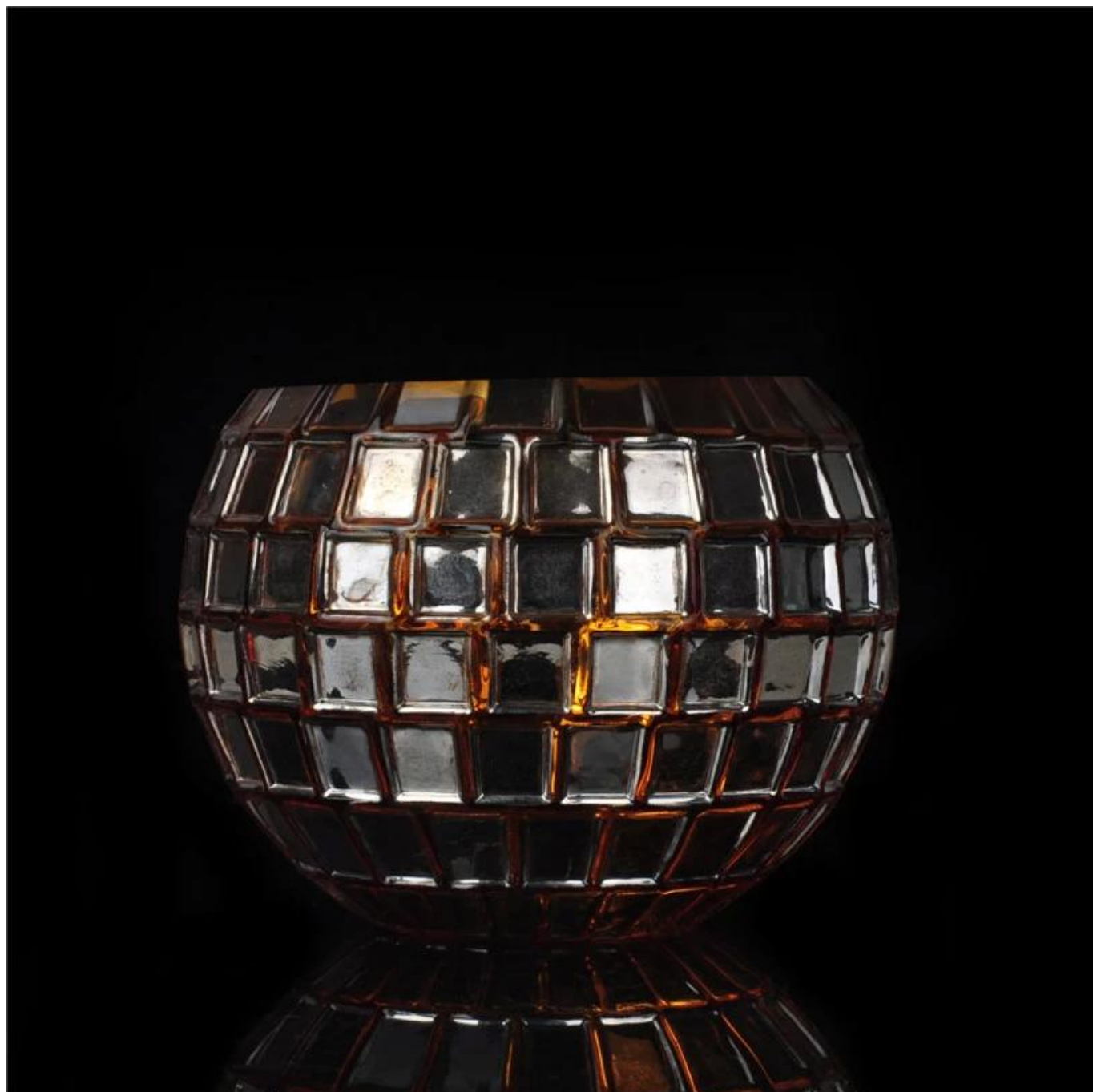
Product Details

	Item No	SGXH15113010
	Size	115*69*114mm max dia:150mm
	Capacity	1119ml
	Material	High white glass
	Lid color	Electroplating, any customized is available
	Sample	7days
	Terms of payment	30% deposit by T/T in advance and the balance after showing copy of L/C
	Certification	Food Safe, Dish washer test, FDA, LFGB
	For your choice	1, Any logo printing on glass body 2, Any color painted, frosted, electroplating, logo laser for the finish 3, Special packing like shrink wrap, color gift box, white box etc 4, Any shape, size meet your need

More Product Pictures









Similar Products Link



[Hight hurricane glass candle holder with color painted](#)

[stem glass candle holder](#)

[goblet candle holder](#)

Office & Sample Room



Factory Show





The features of month blown glass

1. Its advantage including abundance sculpt, technics, surface effects, color etc.
2. The quality is difficult control and the tolerance of the size, weight and shape are bigger.
3. The price is high and the product is limited for the special technic glass.

Method of application

1. Using it under guide of the adult
2. Washing it with clean or boiling water before usage
3. No touching the rim of glass cup, try to take the bottom or the handle of it

Cautions

1. Beer, red wine, white wine, beverage or hot water not be too full
2. To avoid to hurt your children's hand, please put it in the place where they can't reach
3. Avoid dropping ,Collision and strong impact
4. Not available for microwave oven
5. To prevent it from cracking, do not put it over open fire directly

For more [glass candle holder](#) or any glassware,
please visit our website: <http://www.okcandle.com/>

Or here may help you know more about us: [FAQ](#)

[We are looking forward your inquiry and cooperation.](#)

[Homepage back](#)