

# Mini Square Cube Shaped Clear Replacement Glass Candle Vessel

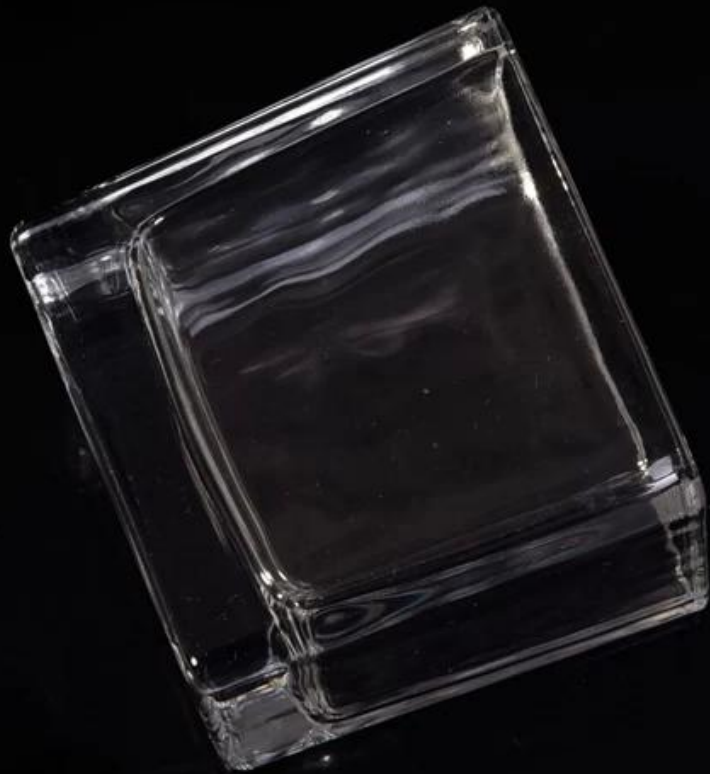
## Product Details

Article number.	SGLYP17042410
Material	Soda Lime Glass
Craft	Machine Made Glass Candle Holders
Samples time	1. 5 days, if the shapes and sizes are existing 2. 15 days, if you need a new shape and size
Packaging	Normal packing 24 or 36pcs in a carton export cardboard partitions
Product Capacity	500,000 ~ 1,000,000 pieces per month
Delivery	Within 35 days after sample approved and order
Payment conditions	30% deposit by T / T in advance and balance against B / L copy
Shipping	By sea, by air, by express and the delivery agent it is acceptable
Product characteristics	1. Suitable for use in the pub, hotel, restaurants, homes, etc. 2. A professional Q / C for quality control 3. Competitive price and quality
For your choice	1. Any logo printing glass box 2. Any color painted, cold, electroplating, painting laser cutting for finishing 3. Special package as shrink film, color gift box, white gift box, etc. 4. Open a new form of glass, wood, plastic or metal as you like 5. Various sizes and shapes to suit your needs

## More Product Pictures



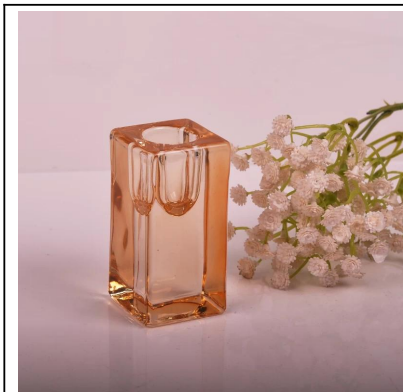








Similar Products Link





Office & Sample Room



Factory Show







[Homepage back](#)