

Matte White Ceramic Jar Footed Ceramic Candle Holder Home Decoration

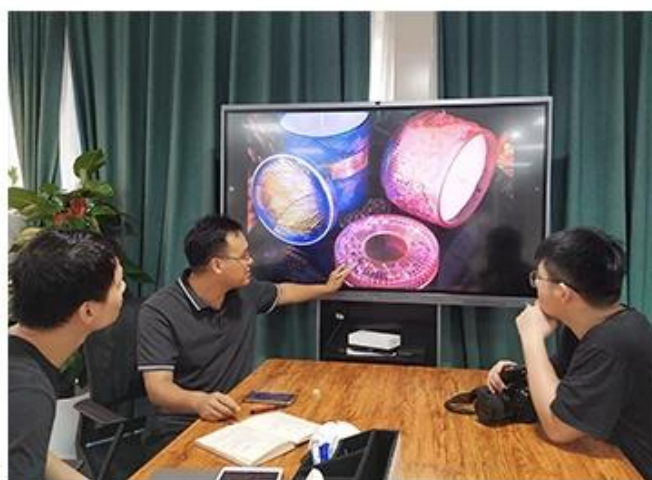


No second Co.in China

Such a large and abundant sample room

No second Co.in China

Our design team achieve Customers' Ideas
becoming creative fragrance
products and sell them very well



No second Co.in China

Our QC is more QC
than our customer's QC

Process Crafts

DEEP PROCESSING



01

ELECTROPLATING

02

LASER ENGRAVING



03

SPRAYING

04

VACUUM
ELECTROPLATING



05

SCREEN PRINTING

Product Details

Why choose Sunny Glassware Candle holders



Unique market advantage

- . Focus on designs
- . candle holder supplier for 80% USA fragrance brand
- . AQL plus 6 strict and sunny QC test standards
- . Maintain quality consistent with sample and quality product

Ceremony design awareness

Designed by award winning professional in SG

- . Received a very admirable NEST fragrance
- . Friend or business relationship gift
- . Relaxation and romantic life





Flexible size design allows your market to grow rapidly

Item No.:SGYC19082220

Top dia:103mm

Bottom dia:98mm

Height:101mm

Weight:384g

Capacity:570ml

MOQ:5000pcs

Custom designs and different sizes available

With our strong support, our customers are growing rapidly, from small labs to industry leaders.

Packing & Shipping

Different From The Peer

Own professional shipping company(Shenzhen Sunny Worldwide logistics)



20+ years freight history and WCA members.



PACKING



Gift box



Carton



Pallet

We have Normal packing,PVC box,Window box,carton box,pallet
Color box,White box,ect.
of course,we can customize Individual gift box for you.



Wooden case

Office & Sample Room

We purchased an international office of 1,800 square meters in Shenzhen.

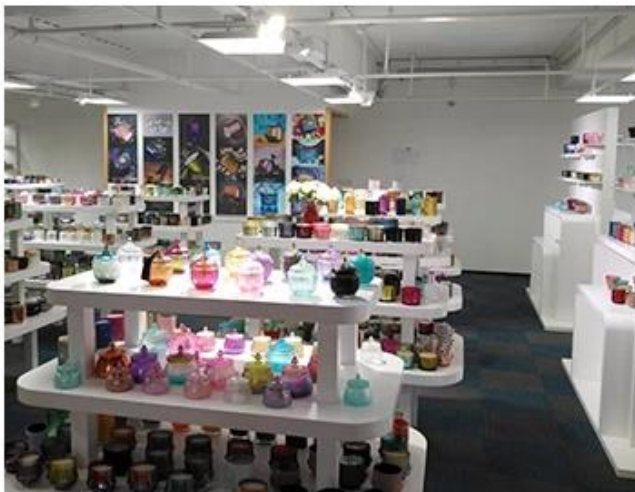


Sample room display

Meiyang Glass provides more than just **Shenzhen sample room has 5000 pieces** A wide range of options. He won a big card [Customer Reviews](#). Welcome to the Shenzhen office! The image is as following **Just part of our design candle holders** Welcome to the Shenzhen office to find your favorite, it will bring you a lot of surprises, because it is difficult to find such another supplier in China.

SAMPLE ROOM

There are more than 5000 products in
sample room of Sunny Glassware
for your reference. No second Co. in China!



Factory Show

Below are pictures of major online transactions. For more factory information, please see: [Factory tour](#)

FACTORY

There are about 20000 square meters in our factory
which was built in 1992 year;
Superior quality and high efficiency
can be guranteed.



[Our certificate](#)

The image displays a collection of seven framed certificates and awards, arranged in three rows. The top row features three documents: a Chinese Design Patent Certificate, an SGS Test Report, and a QMS Certification of Registration. The middle row contains a Gold Plus Supplier Assessment Certificate. The bottom row consists of three identical 'Made in China 2017' award certificates. Each certificate is presented in a gold-colored frame, except for the bottom row which is in a silver-colored frame.

Top Row, Left: 外观设计专利证书 (Design Patent Certificate)
 Issued by the China National Intellectual Property Administration (CNIPA). The certificate is for the design of a glass bottle (外观设计专利证书). The applicant is Sunny Glassware Co., Ltd. (深圳市美阳玻璃制品有限公司). The patent number is 2016 3 0186079.9. The certificate is signed by the Director of the CNIPA, Zhang Xing.

Top Row, Middle: SGS Test Report
 Issued by SGS, a global inspection, verification, testing, and certification company. The report is for the Sunny Glassware Factory in Shenzhen, China. It details the testing of glass bottles (SGS Test Report) and confirms that the products meet the required standards (SGS Test Report).

Top Row, Right: QMS CERTIFICATION OF REGISTRATION
 Issued by Zhongren Certification Co., Ltd. The certificate is for the Sunny Glassware Co., Ltd. (Shenzhen Sunny Glassware Co., Ltd.). It certifies that the company's Quality Management System (QMS) is in accordance with the requirements of the standard GB/T 19001-2016 idt ISO 9001:2015. The certificate is signed by the Director of Zhongren Certification Co., Ltd., Haibo Chen.

Middle Row: Gold Plus Supplier Assessment Certificate
 Issued by Alibaba.com. The certificate is for the Sunny Glassware Co., Ltd. (深圳市美阳玻璃制品有限公司). It certifies that the company is a Gold Plus Supplier, indicating a high level of performance and reliability. The certificate is signed by the Director of Alibaba.com, Zhang Xing.

Bottom Row: 2016-2017 中国制造业之美 (2016-2017 China Manufacturing Excellence Award)
 Issued by the China Manufacturing Excellence Award (CMEA) organization. The award is for the Sunny Glassware Co., Ltd. (深圳市美阳玻璃制品有限公司). It recognizes the company's outstanding performance in manufacturing excellence. The award is signed by the Director of CMEA, Zhang Xing.

