

Luxury Gold electroplated round bottom ceramic candle holder 10oz popular selling home decoration

Product Details

Element name	Luxury Gold electroplated round bottom ceramic candle holder 10oz popular selling home decoration
Object number.	SGGH19011616
Cut it	Top dia: 88mm Bottom dia: 80mm Height: 98mm Weight: 242g Capacity: 400ml Other sizes: 5 ounces / 8 ounces / 10 ounces / 16 ounces are also available
Capacity	10oz 14oz 16oz etc. It's available
Sampling time	1.5 days if the shape and size of the products exist 2.15 days if you need new shape and size of the products
Packaging	24pcs / 36pcs / 48pcs regular safety packing and so on For export carton with egg divider
MOQ	5000pcs
Delivery time	Within 35 days after the order confirmed
Payment terms	30% deposit by T / T in advance, the balance after showing the copy of B / L
Product features	<ol style="list-style-type: none">1. High quality and competitive prices2. Testing FDA, SGS, LFGB etc.3. Eco Friendly4. It is widely aimed at Wedding, party, home, bars etc.5. Handmade

More Product Pictures

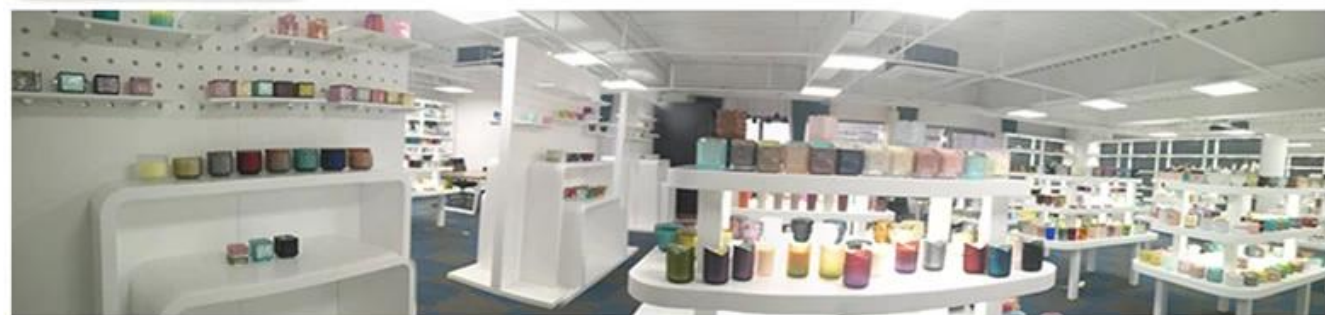






Office & Sample Room





Factory Show





The characteristics of the blown glass a month

1. Its advantage including sculpture of abundance, techniques, surface effects, color etc.
2. Quality is a difficult check and tolerance of size, weight and shape is greater.
3. The price is high and the product is limited for special technical glass.

Application method

1. Using it under the guidance of the adult
2. Wash it with clean or hot water before use
3. Do not touch the edge of the glass cup, try taking the bottom or the handle of it

Precautions

1. Beer, red wine, white wine, drink or hot water should not be too full
2. To avoid hurting your children's hand, please put them where they can not reach
3. Avoid falls, collision and strong impact
4. Not available for microwave oven
5. To prevent it from breaking, do not put it directly on the fire

For more [candle holder](#) or any glass,

Please visit our website:<http://www.okcandle.com/>

Or here it can help you know better than us: **FAQ**

[We await your request and cooperation.](#)

[Homepage back](#)