

## Low MOQ Egg Shape Glass Candle Jar With Lids

**Sunny Glass can not only perform OEM/ODM orders, but also help many brands from concept design to actual proudcts.**

**Any custom design are acceptable, we can get your ideas becomes a creative design and sell well int the market**



### Product Details

[The characteristics of this candle jar with lids](#)

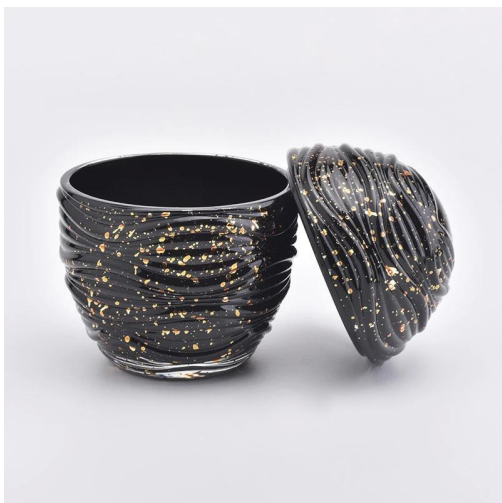
---

1. Egg shape glass candle holders
2. Spraying black color with god dots on the candle holders and lids



## Why choose Sunny Glassware Candle holders

---



### Unique market advantage

- . Focus on designs
- . candle holder supplier for 80% USA fragrance brand
- . AQL plus 6 strict and sunny QC test standards
- . Maintain quality consistent with sample and quality product

## Ceremony design awareness

- . Won the "Made in China" award
- . Received a very admirable NEST fragrance
- . Friend or business relationship gift
  - . Relaxation and romantic life



## Flexible size design allows your market to grow rapidly

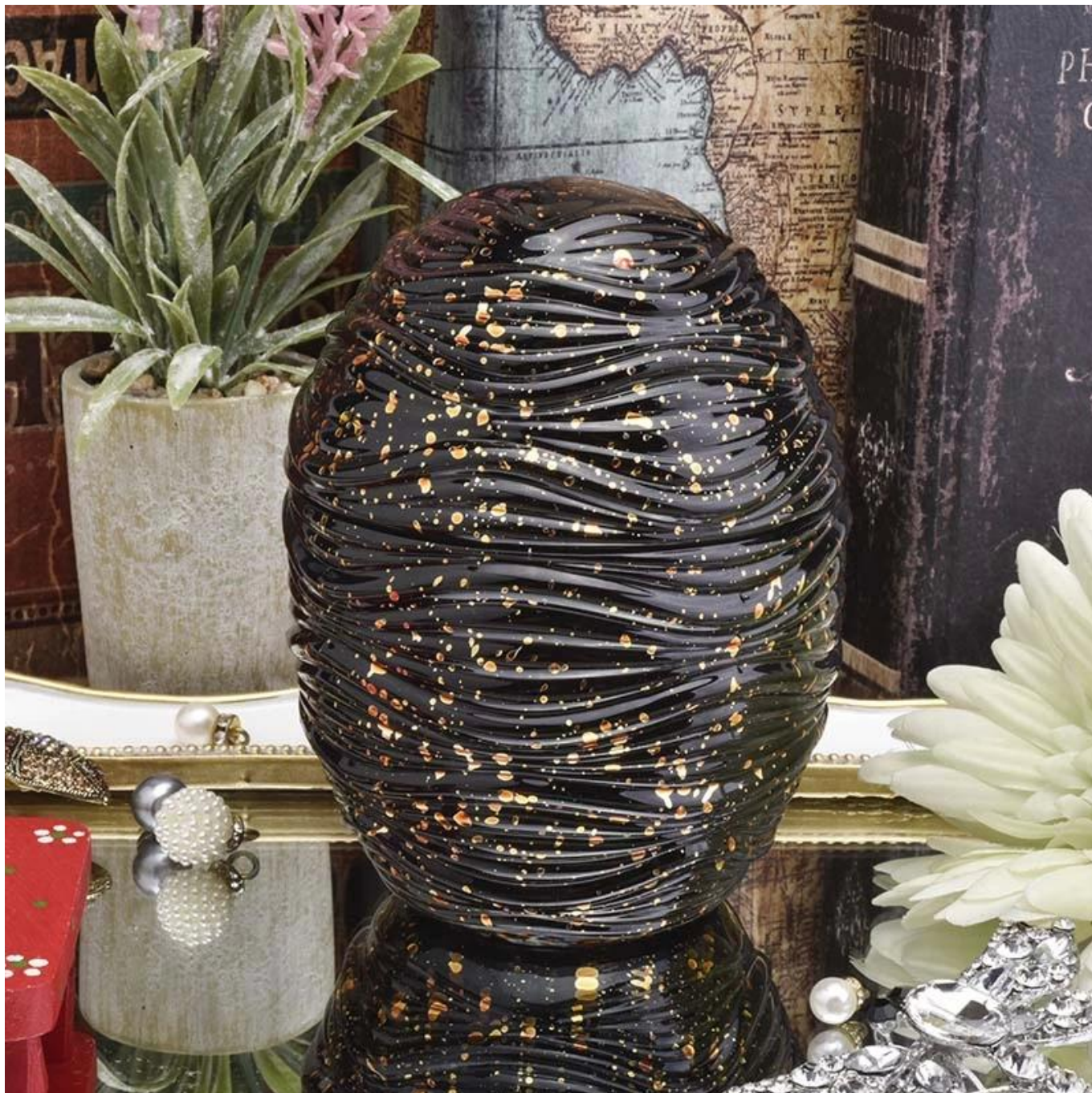


Body□  
Top dia:97mm  
Bottom dia: 60mm  
Height: 80mm  
Weight:365g  
Capacity: 330ml  
Lid:  
Top dia:98mm  
Height: 65mm  
Weight:210g

Custom designs and different sizes available

With our strong support, our customers are growing rapidly, from small labs to industry leaders.

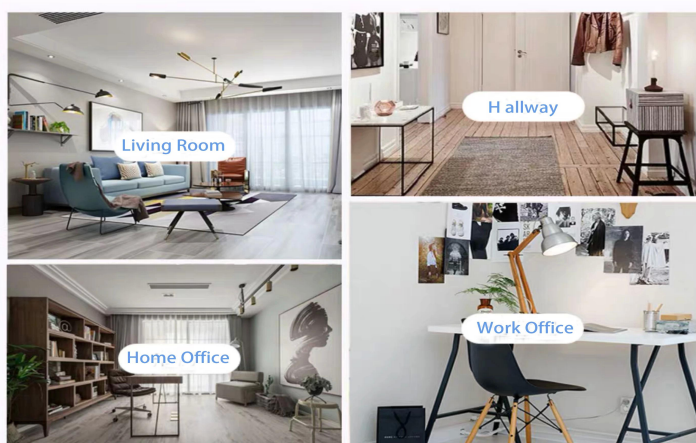
.



Range of the application

## Life scene

- . Coffee or bar
- . Perfect for families, hotels or gardens
- . Sweet lover's gift
- . Every renovation



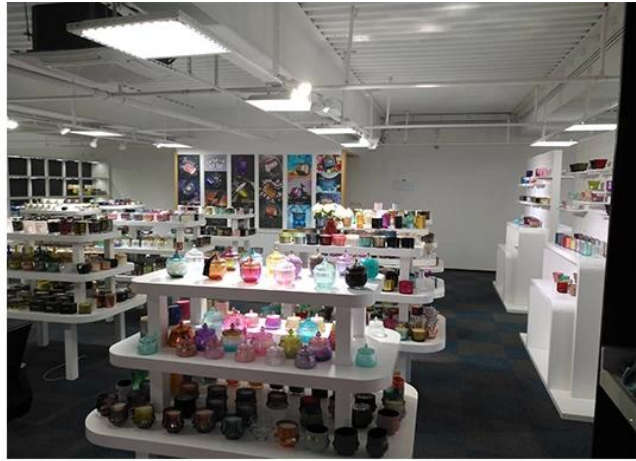
## Office & Sample Room

We purchased an international office of 1,800 square meters in Shenzhen.



## Sample room display

Meiyang Glass provides more than just **Shenzhen sample room has 5000 pieces** A wide range of options. He won a big card [Customer Reviews](#). Welcome to the Shenzhen office! The image is as follows **Just part of our design candlestick** Welcome to the Shenzhen office to find your favorite, it will bring you a lot of surprises, because it is difficult to find such another supplier in China.



## Our certificate



ASTM



ISO9001-2015



Green and social  
responsibility  
Policy's statement

## Factory Show

Below are pictures of major online transactions. For more factory information, please see: [Factory tour](#)

### 01 Factory





## Surface Treatment

10+ production lines



□ Spraying



□ Engraving



□ Electroplating



□ Silk-screen



- Spraying
- Engraving
- Electroplating
- Silk-Screen

### Other videos

#### **The characteristics of the machine pressed glass candlestick**

Open Machine Machine-Pressed Craft is usually used to make candlesticks with the following features: the upper diameter is lower than the bottom

- . Mass production with high MOQ
- . Embossed pattern on the outer wall
- . Maximum - Minimum thickness: 1.5~10mm
- . Thinner thickness: 4~30mm
- . Low cost model cost on the exterior wall.

#### **Application method**

1. Use it under the guidance of an adult
2. Rinse with water or boiling water before use
3. Do not touch the edge of the glass, try removing the bottom of the glass or the handle

#### **Precautions**

- Beer, wine, white wine, drinks or hot water may not be too full
- 2. To avoid hurting your child's hands, keep them out of reach.
- 3. Avoid falling, collision and strong impact
- 4. Not applicable to microwave ovens
- 5. To prevent it from rupturing, do not place it directly on fire.

More [Candlestick](#) Or any glass,

Please visit our website: [Http://www.okcandle.com/](http://www.okcandle.com/)

Or here can help you better understand us: [FAQ](#)