

Long Stem Hand Painted Drinking Glass Cup for Martini

| | |
|------------------|---|
| Product Details | |
| Product ID | SGH6053-2 |
| Material | Glass stem glassware |
| Crafts | Hand made stem glass cup |
| Product Capacity | 1000~5000 units per day |
| Packing | Normal packing,Individual gift box,PVC box>window box,color box,white box,ect. |
| Deep Processing | Hand Painting |
| Sample Time | 5-7 days after confirming. |
| Delivery Time | 30-45 days after sample and order confirmed. |
| Payment Terms | T / T 30% down payment, pay the balance due to see a copy of the bill of lading |
| Transport | Maritime transport, air transport, international express delivery; guests designated freight forwarding |
| Product Features | 1.Certifications:FDA, Dishwasher Test,SGS, ISO9001 2.OEM/ODM Are Available 3.usage:Martini whisky glass cup, White Wine Stemware For club,pub or party etc. 4.Good service:Customer is the first |

More Product Pictures



SUNNY GLASSWARE
ITEM NO.
TID/MD
H. 10 cm W. 7.5 cm
V. 2.00 ml P. 1/10

Hand-painted glass

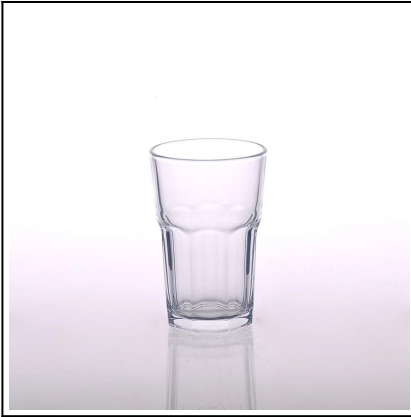


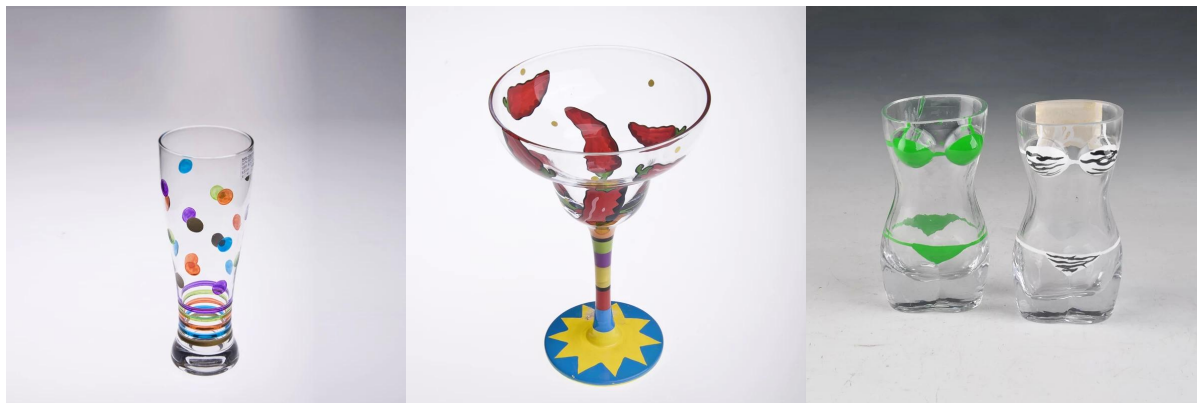
Contact us

For frequently asked questions, please click here [FAQ](#). Or welcome to contact me, Kate.

More Product Pictures







Office & Sample Room

[Shenzhen Sunny Glassware Co.,Ltd](#) was established in 1992. We have been in this industry area for more than 20 years, as a professional manufacturer, we specialized in designing glassware, manufacturing glassware as well as exporting. Our products lines range from handmade to machine made.

We already produced abundant products such as [glass tumbler](#), [borosilicate glass](#), [shot glass](#), [vase](#), [bowl](#), [candle holder](#), [stemware](#), [ashtray](#), [tableware](#), [drinking glass](#), etc. all the daily use glassware, in total there are more than 4,000 different styles.

We have an excellent design team for innovative product creation and strict QC team for quality assurance. OEM/ODM service are supported as well.



Factory Show



