

# Hot Sale Amber Glass Candle Jars



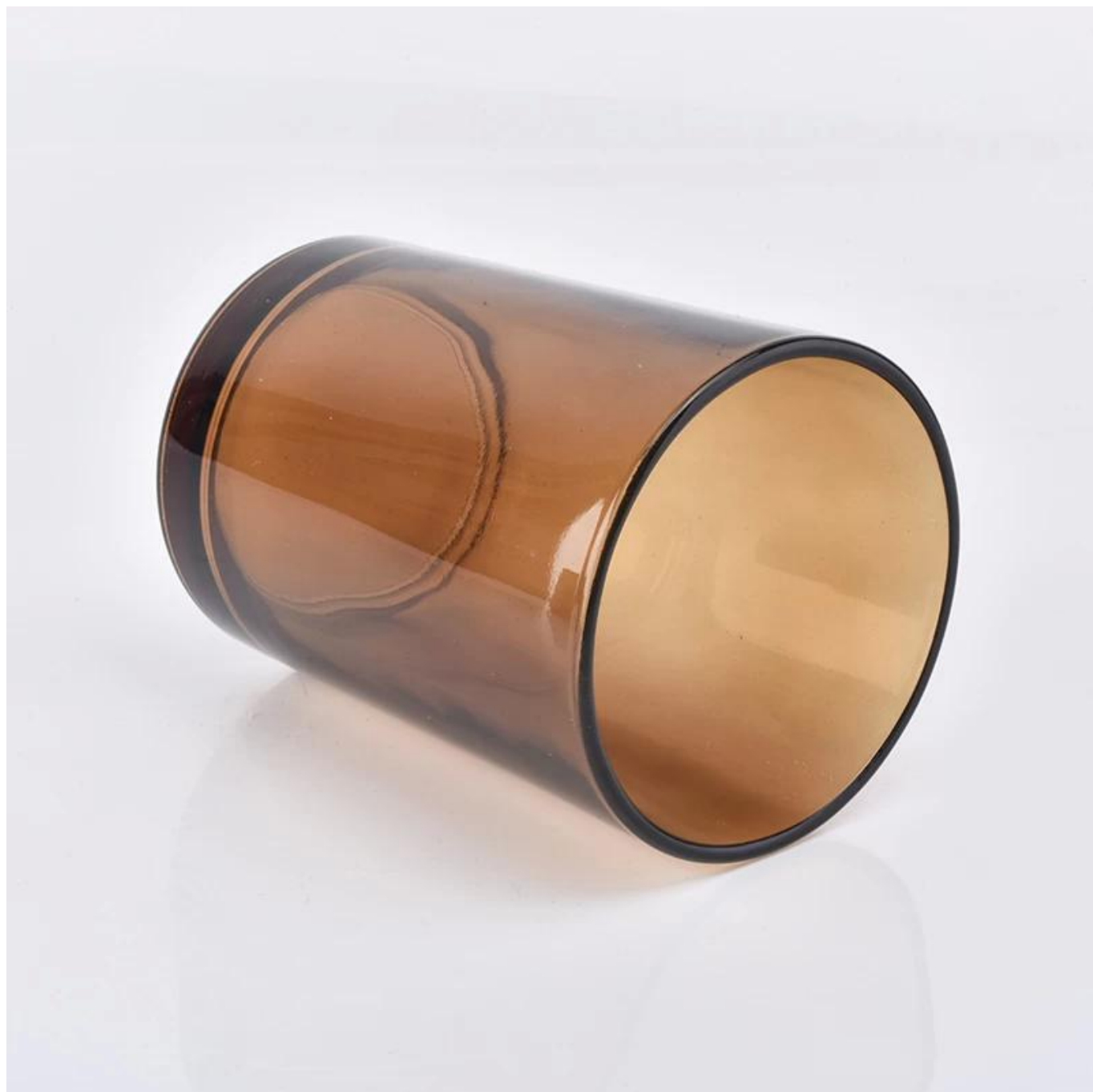
## Product Details

Item No	SGA79105Y
Size	Top dia: 79mm Bottom dia: 75mm Height: 105mm Weight: 300 g Capacity: 330 ml  2oz 4oz 6oz 8oz 10oz 12oz etc glass jar are available
color	Any color printing on glass are available
Material	Glass
Sample	7days
Terms of payment	30% deposit by T/T in advance and the balance after showing copy of L/C
Certification	ASTM Test (for candle holder)
For your choice	1, Any logo printing on glass body 2, Any color painted, frosted, electroplating, logo laser for the finish 3, Special packing like shrink wrap, color gift box, white box etc 4, Any shape, size meet your need



## More Product Pictures









## Hall 3.0 Stand D41

set to reveal its new brand along with an ever-growing After celebrating its 100th anniversary, the company has decided to further expand its brand — a decision that has so far resulted in the launch of the Pyrex brand — a product range in 1915 and continue to be a highlight of the company's success. The new Magic range, while it has been added to the 10 of more ranges will also include the ever-popular Pyrex brand. Expect to see the new Pyrex brand and healthy cooking.

containers, so everything in the kitchen looks like it is designed to be there.

The Grub Tub range includes polypropylene lunch boxes in a number of bright colours and it comes with useful features. The box has two separate containers and it comes with plastic cutlery and gloves to hold them. There's a sealable cup, and a cool bag big enough to hold it all. There's an elastic strap to keep the box sealed and an elastic ring inside the bag to hold the cup in place. Grub Tub also includes various shapes and sizes of air-tight, transparent, polystyrene and silicone food storage containers. It's a range for active consumers who want to have lunch on-the-go, or keep ingredients fresher for longer.

[www.premierhousewares.co.uk](http://www.premierhousewares.co.uk)

### Table 1.2 Stand A07

For 2017, Finum is expanding its coffee assortment with the introduction of two functional coffee brewers. Bloom and Flow is a new pour-over coffee and tea brewer consisting of a stylish glass carafe and a unique funnel insert which provides an optimised bloom and flow of coffee through the paper cone. Made in Germany, it comes with a funnel adapter which converts Bloom and Flow into a pour-over tea brewer.

Coffee Sprinter, a single-serve coffee brewer (pictured), is the solution to ultimate freshness – place the Coffee Sprinter on a mug or cup and add ground coffee into the filter; the water distributor is inserted to press the ground

Grand Del

[illegible]

### Hall 3.1 Stand D30

Kela

Hall 1.2 Stand E 30 + E 70

Founded in 1963 and based in Germany, technology company offers an extensive range of quality products.

Hal 31:1  
 Katherine Dwy  
 Quenby and Co  
 produce a most  
 new and original  
 conscious course  
 for the first time  
 Save liberty for  
 the main result of the  
 of ideas and the  
 offering the sta  
 model the Man  
 with a 33 line bo  
 head and other  
 evidence possible  
 Dwyer and  
 Ware Day and  
 color products  
 were Mich

### Similar Products Link