

# White color wholesale ceramic glaze

## Product Details

Item No.	Item No.:SGTX17060909B Top dia: 83*86mm Bottom dia: 93*97mm Height: 85mm Weight: 342g Capacity: 395ml Material: Ceramic MOQ: 5000 pcs Sample time: 7 days
Material	Ceramic /glazed ceramic paint wholesale
Docoration & accessories	*decal, color coating, mercury, laser, frosted, plating, glazed etc. *cap, ceramic/metal/wood lid, wax, wick, shear etc
Packing	1. 24/36/48/72 pcs per standard export packing carton 2. Color/white/brown box packing 3. Luxury gift box packing 4. Shrinking packing 5. Individual/set box packing 6. Customized packing
More about ceramics	Different material of ceramic have different tolerance,normally, Ceramics dimensions tolerance: *wall thickness and size: 3mm error *weight :error of 20%
Our service	* Reply you within 24 hours * Ranges of products for your selections * Completely production system * Skilled factory workers * Both machine line and handmade line for your service * Experienced QC team inspect the products comprehensively and strictly according to AQL standard * Creative designer innovate newly products over 15 styles monthly * Professional Logistic department supply to door service

## More Product Pictures





**Similar products:**



**SGSY17061201**

**SGSY17061203**



**SGSY17061208**

**SGSY17061212**

  
**Office & Sample Room**

Sunny Glassware is a leading candle holders supplier in China since 1992, our glass/ceramic/concrete candle jars etc. and matched accessories.

**More about our Sunny Glassware:**

1. The glassware passed FDA test(American glass products safety test);
2. Independent logistic department,strict QC staffs,quality control people,sales team for tackle all issues during the product producing,safe and trust;
3. Quick and urgent order: Capability: about 0.5-1 million/ month;
4. Decoration: package decoration,gift box;
- 5.Strength:laser painting, decal printing, frost.

---

**Sunny's Advantages:**

- 1.Main products: glass cups,glass tea pot,wine cup, glass candle holder,bowl,dish,etc;
- 2.Process like decal printing(logo printing), spraying colors, frosting;
- 3.Crafts: man made, Machine pressed, machine blown, hand made;
- 4.Strength:spray color,laser painting, decal printing, frost.
- 5.Capability: about 0.5-1 million/ month;
- 6.Decoration: Package decoration, gift box;
- 7.pass FDA,lead&cadmium safe;

8.7-14 days sample lead time ;

9.Within 35 days production lead time.

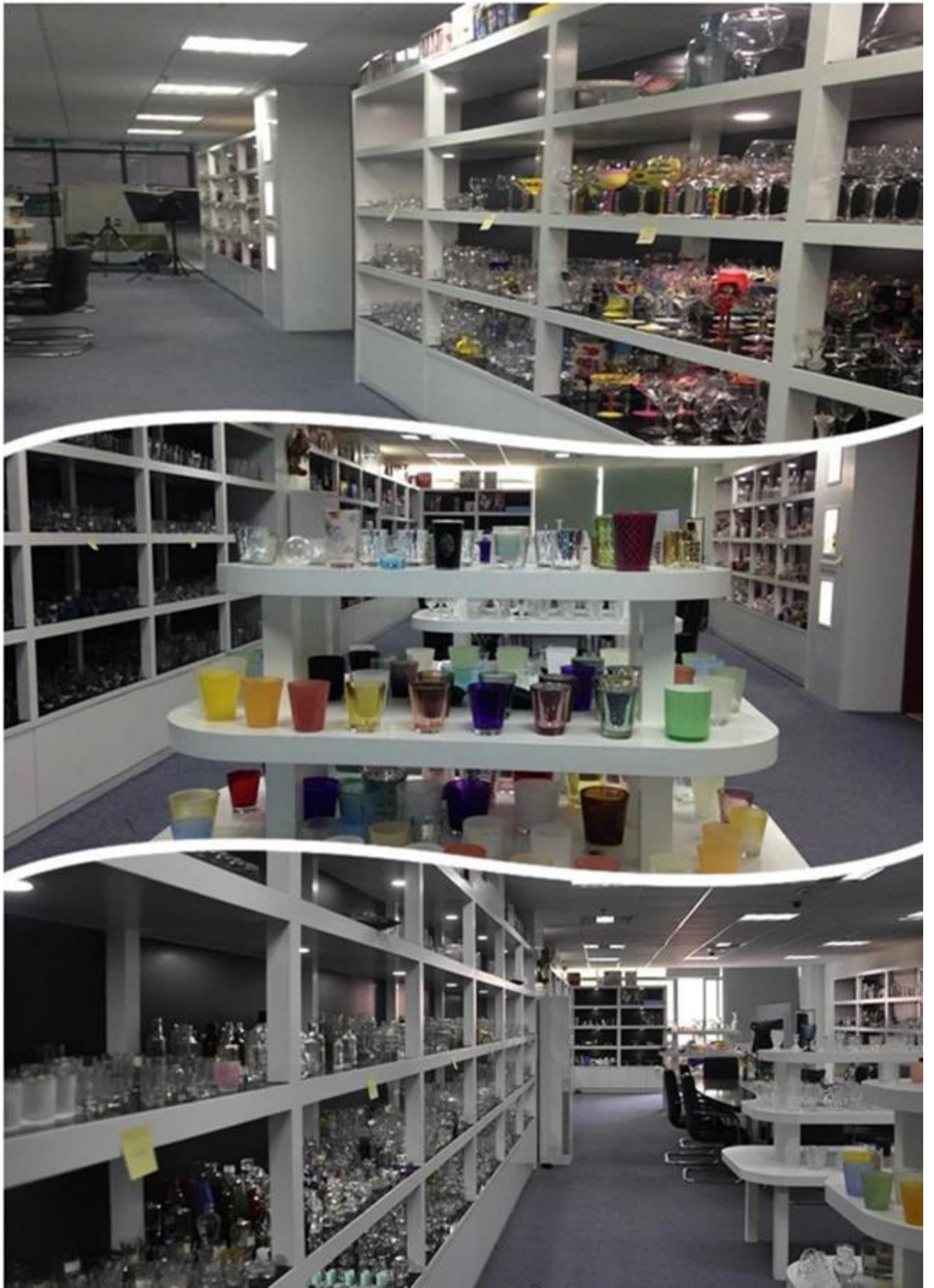
**Our Facotry:**



**Production:**



**Our Showroom:**



**Certificate:**



**Test Report**

No.: GZ0806114365/CHEM

Date: JUL 02 2008

Page 1 of 4

SHANXI SUNNY GLASSWARE FACTORY SHENZHEN OFFICE  
RM 204, BAOHU BUILDING, DONGHU ROAD, LUOHU DISTRICT, SHENZHEN, GUANGDONG, CHINA

The following sample(s) was/were submitted and identified on behalf of the applicant as Coffee glass

SGS Ref No.	: SZ11126876
Buyer	: TEDI
Manufacturer	: SHANXI SUNNY GLASSWARE FACTORY
Country of Origin	: CHINA
Country of Destination	: GERMANY
Sample Receiving Date	: JUN 26, 2008
Testing Period	: JUN 26, 2008 TO JUL 02 2008

**Test Requested** : In accordance with German Food, Articles of Daily Use and Feed Code of September 1, 2005 (LFGB), Section 30 & DIN 51032:1986.

**Test Method** : With reference to EN 1388: 1995.  
Analysis was performed by Inductively Coupled Argon Plasma Spectrometry.

**Conclusion** : When tested as specified, the submitted sample(s) do not comply with the limit as stated in the German Food, Articles of Daily Use and Feed Code of September 1, 2005 (LFGB), Section 30.

Signed for and on behalf of  
SGS-CSTC Ltd.

Wang HongLei, Leo  
Sr. Engineer



This document is issued by the Company under its General Conditions of Service printed overleaf or available on request and accessible at [http://www.sgs.com/terms\\_and\\_conditions.htm](http://www.sgs.com/terms_and_conditions.htm). Attention is drawn to the limitation of liability, indemnification and jurisdiction issues defined therein. Any holder of this document is advised that information contained herein represents only the findings at the time of its intervention only and within the limits of Client's instructions, if any. The Company's sole responsibility is to its Client and this document does not generate parties to a transaction from exercising all their rights and obligations under the transaction documents. Any unauthorized alteration, forgery or falsification of the content or appearance of this document is unlawful and offenders may be prosecuted to the fullest extent of the law.  
Unless otherwise stated, results shown in this test report refer only to the sample(s) tested. This document cannot be reproduced except in full, without prior approval of the Company.



SGS (Singapore) Pte. Ltd. 110 Keat Seng Road, Singapore 627001 | 中国·广州·经济技术开发区科学城珠新路198号

Member of the SGS Group (SGS SA)

[Home page](#)