

# Gold decoration ceramic round bottom candle holder wholesale

## Product Details

### Gold decoration ceramic round bottom candle holder wholesal

Item name	
Item No.	SGXYT18112801
Size	Top dia: 87mm Bottom dia: 48mm Height: 96mm Weight: 314g Capacity: 402ml
Capacity	10oz 14oz 16oz etc is available
Sample time	1.5 days if at exist shape and size of products 2.15 days if need new shape and size of products
Packing	Normal safety packing 24pcs/36pcs/48pcs etc. per export carton with egg divider
MOQ	3000pcs
Delivery time	Within 35 days after order confirmed
Payment terms	30% deposit by T/T in advance, the balance after showing the copy of B/L
Product feature	1.High quality and competitve prices 2.Meet FDA, SGS,LFGB etc. test 3.Eco-friendly 4.Widely apply to Wedding, party, home, bar etc. 5.Machine made

## More Product Pictures





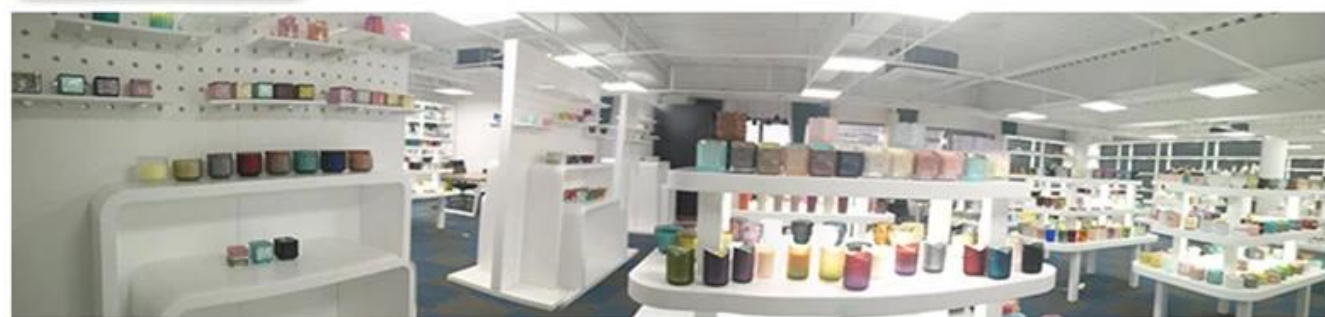






Office & Sample Room





Factory Show









### The features of month blown glass

1. Its advantage including abundance sculpt, technics, surface effects, color etc.
2. The quality is difficult control and the tolerance of the size, weight and shape are bigger.
3. The price is high and the product is limited for the special technic glass.

### Method of application

1. Using it under guide of the adult
2. Washing it with clean or boiling water before usage
3. No touching the rim of glass cup, try to take the bottom or the handle of it

### Cautions

1. Beer, red wine, white wine, beverage or hot water not be too full
2. To avoid to hurt your children's hand, please put it in the place where they can't reach
3. Avoid dropping ,Collision and strong impact
4. Not available for microwave oven
5. To prevent it from cracking, do not put it over open fire directly

For more [candle holder](#) or any glassware,  
please visit our website: <http://www.okcandle.com/>

Or here may help you know more about us: [FAQ](#)

[We are looking forward your inquiry and cooperation.](#)

[Homepage back](#)