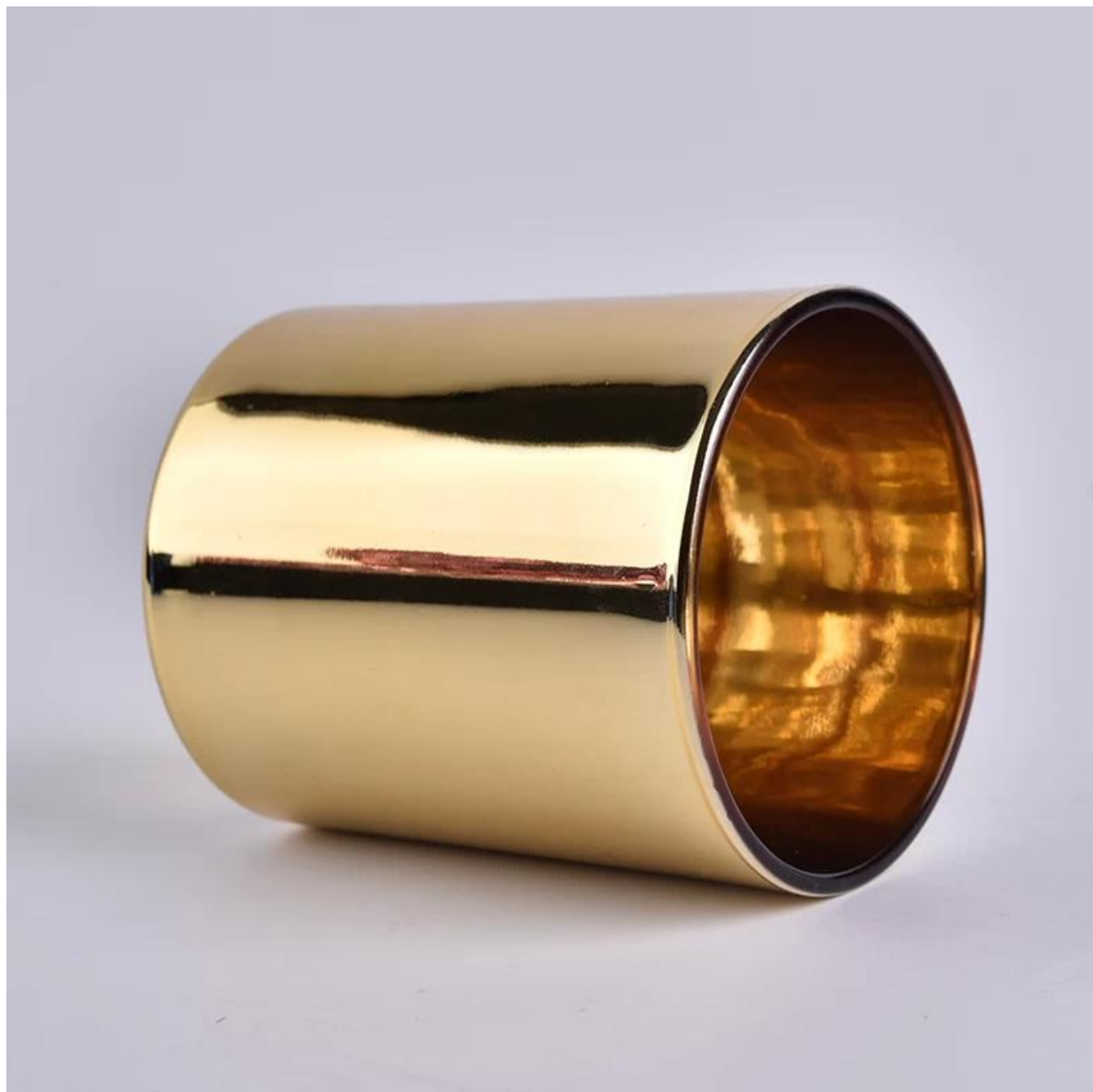


Electrophoresis gold glass candle jar

Product Details	
Item number.	SGJBS18032712
Material	high white glass material
craft	machine made glass candle jar
Samples time	1. 5 days if there is a form and size of the glass 2. 15 days, if you need a new shape and size glass
Packaging	Normal packing, 4 pieces in inner box, 48 pieces in box
Product Capacity	500,000 ~ 1,000,000 pieces per month
Delivery time	Within 35 days after the sample and in order confirmed
Terms of payment	30% deposit by T / T in advance and balance against copy of B / L
Shipment	By sea, by air, by express and the delivery agent acceptable
Product Features	1. Home decor glass candle jar from high quality 2. Suitable for use in hotel, house, etc. 3. Meet ASTM Test
For your choice	1. Various designs and sizes for selection 2 Any color painted, cold, electroplating, laser model Processing cutter 3. Special package as shrink film, color gift box, white gift box, etc. 4. We are exclusive of employees for quality control 5. We have a professional workshop and warehouse for ensure delivery time













Factory Tour >>



Customers
Visiting

^
^
Trade Show
Visiting

<< Office Visiting

Sample Room

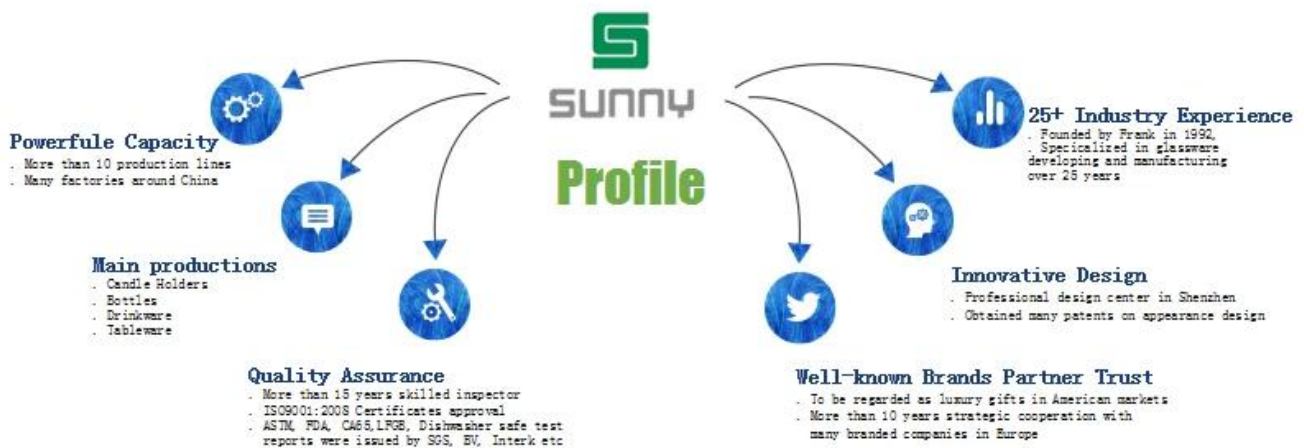


4,000+ Items for Choice



Shenzhen Sunny Glassware Co.,Ltd

—To be your **Reliable Supplier**



Features months blown glass

1. The benefit, including the number of mold, machinery, surface effects, colors, etc.
2. Quality control is difficult and tolerance of size, weight and shape larger.
3. The price is high and the product is limited to a special technique of glass.

Mode of application

1. Use it under the guidance of an adult
2. Washing it with pure or boiling water prior to use
3. No touching the rim of a glass cup, try to take the bottom or handle it

Precautionary measures

1. Beer, red wine, white wine, drinks or hot water will not be crowded
2. To avoid hurting your children by the hand, please put it in a place where they can not reach
3. Do not drop, collision and strong influence
4. Do not microwave
5. To prevent cracking, do not put it directly over an open fire

For more [candle holder](#) or any glassware,
please visit our website: <http://www.okcandle.com/>
Or, can help you learn more about us: [FAQ](#)