

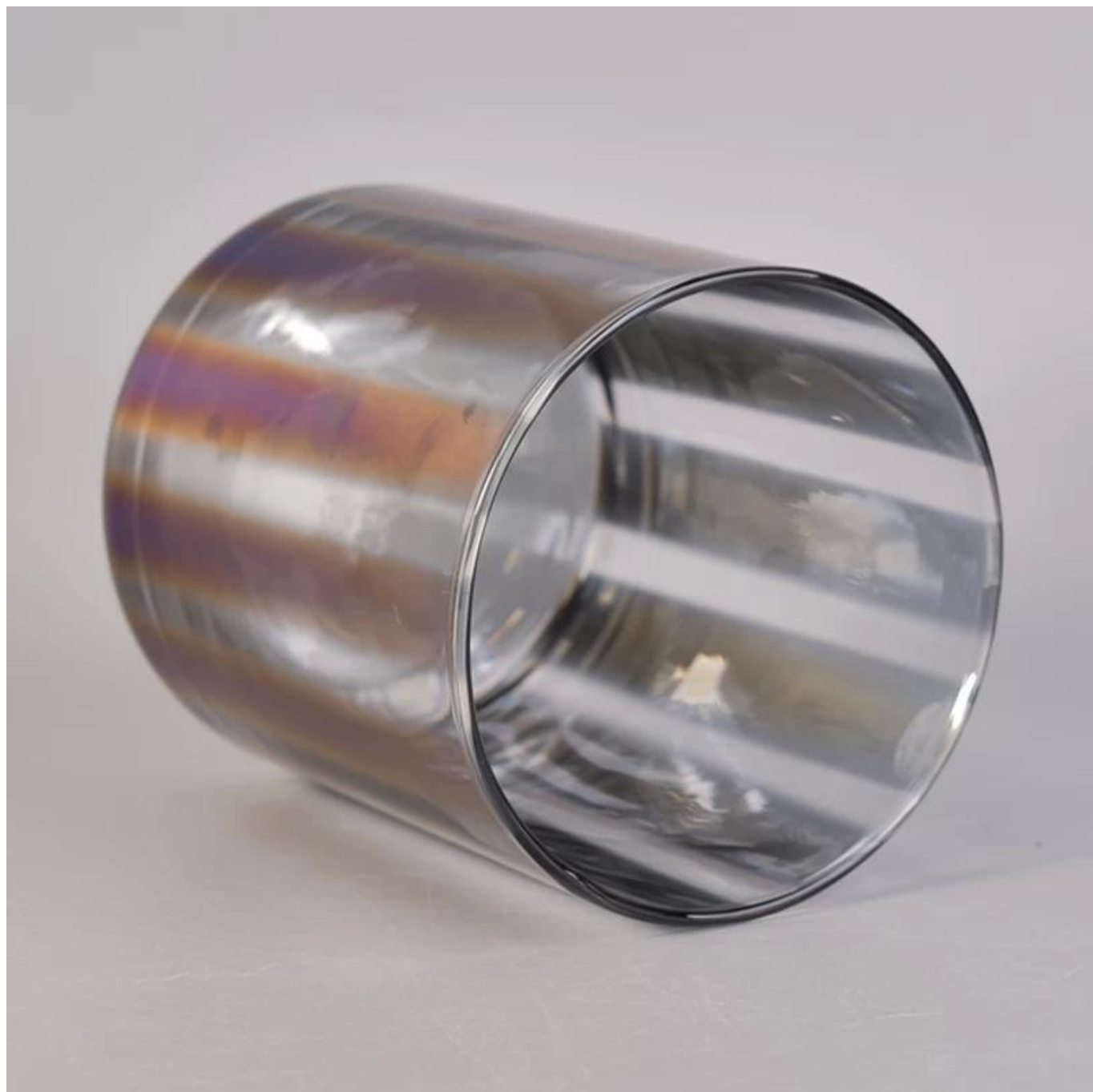
# Decorative Straight Walled Glass Candle Containers with Electroplating Color Effect

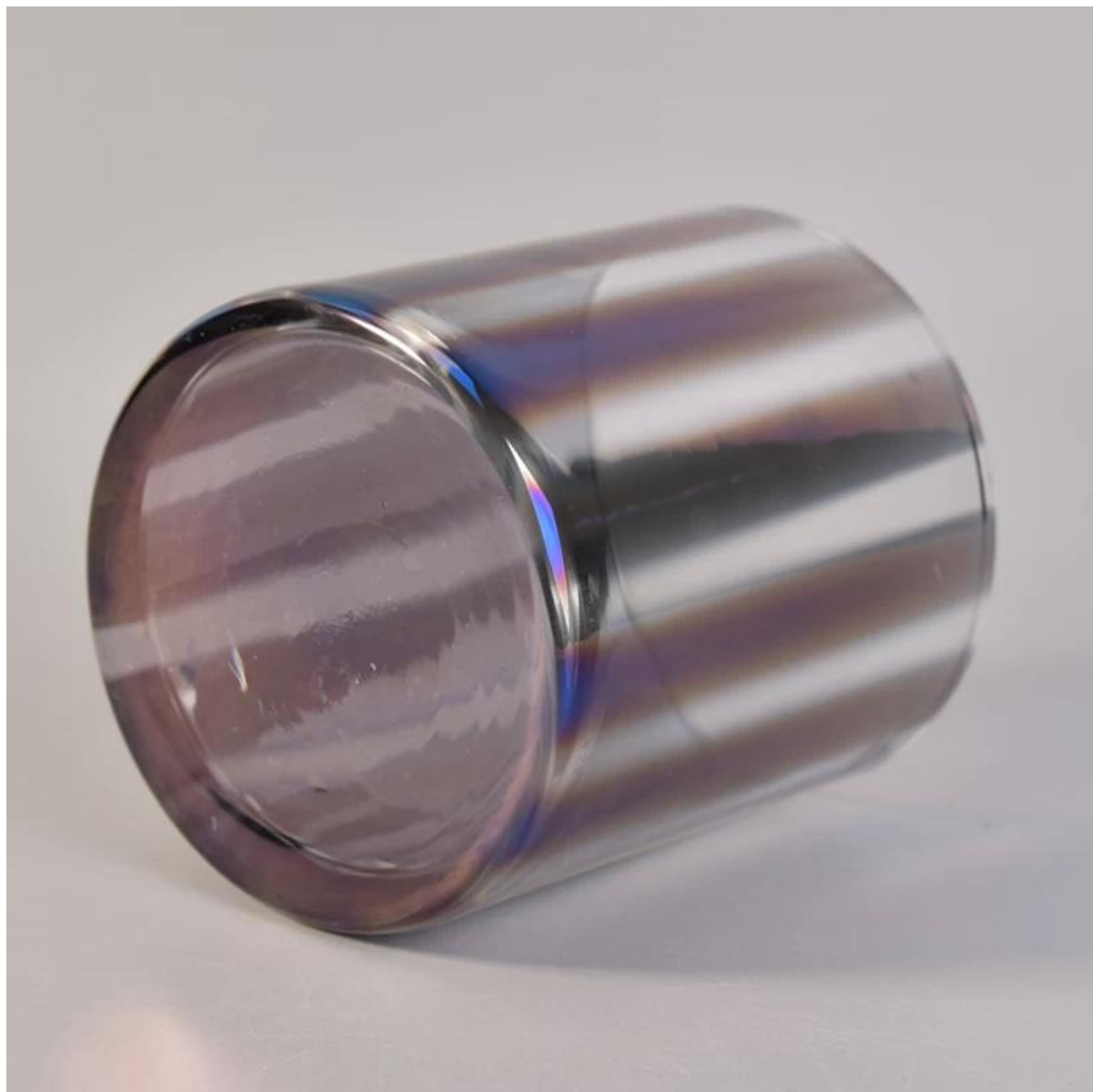
## Product Details

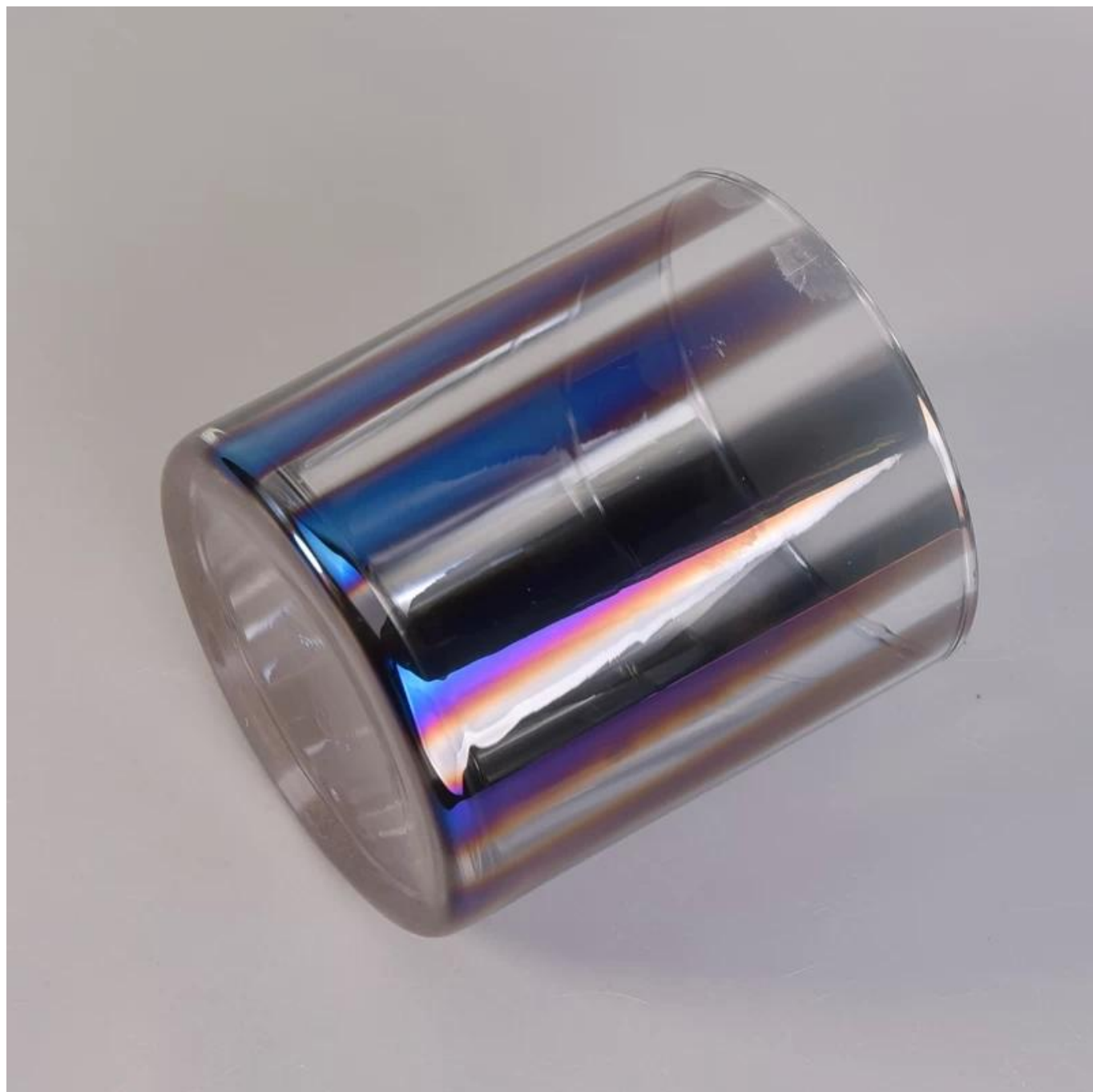
|                         |  |
|-------------------------|--|
| Article number.         | SGLYP17042213  |
| Material                | Soda Lime Glass  |
| Craft                   | Hand Made Vertical Glass Candle Holders  |
| Samples time            | 1. 5 days, if the shapes and sizes are existing<br>2. 15 days, if you need a new shape and size  |
| Packaging               | Normal packing 24 or 36pcs in a carton export cardboard partitions   |
| Product Capacity        | 500,000 ~ 1,000,000 pieces per month   |
| Delivery                | Within 35 days after sample approved and order   |
| Payment conditions      | 30% deposit by T / T in advance and balance against B / L copy   |
| Shipping                | By sea, by air, by express and the delivery agent it is acceptable   |
| Product characteristics | 1. Suitable for use in the pub, hotel, restaurants, homes, etc.<br>2. A professional Q / C for quality control<br>3. Competitive price and quality   |
| For your choice         | 1. Any logo printing glass<br>2. Any color painted, cold, electroplating, painting laser cutting for finishing<br>3. Special package as shrink film, color gift box, white gift box, etc.<br>4. Open a new form of glass, wood, plastic or metal as you like<br>5. Various sizes and shapes to suit your needs |

## More Product Pictures







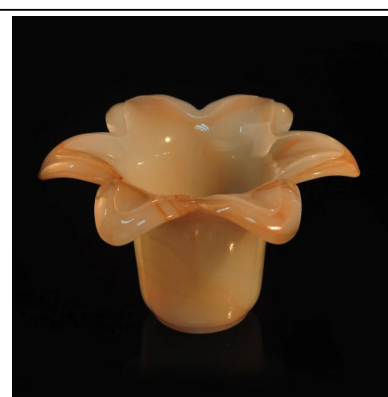
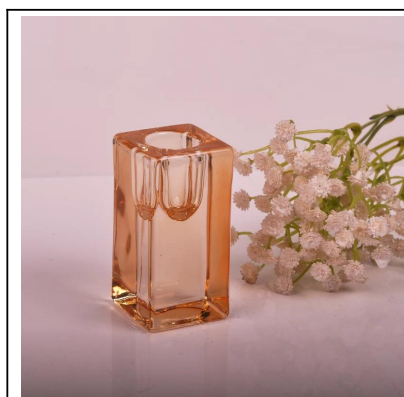








Similar Products Link



## Office & Sample Room



## Factory Show







[Homepage back](#)