

# Cylinder Iron Plating Glass Candle Holder

| Product Details         |  |
|-------------------------|--|
| Item number.            | SGQXD16082910  |
| Material                | Glass  |
| Craft & Deep processing | Machined pressed and iron plating  |
| Sample time             | 1. 5 days if there is existing stock of this design.<br>2. 10 days, if you need a new design or size.  |
| Main usages             | 1. As Votive candle holders.<br>2. Decoration in home, wedding,hotel,restaurant, party, banquet<br>3. Night lighting, accent lighting.<br>4. Scented oil heat ing.<br>5. Teapot/food warmer.<br>6. As gift choice. |
| The Features            | 1. Machine pressed decorative <a href="#">glass candle holders</a> from high quality.<br>2. Eco-friendly.<br>3. Meet ASTM test.<br>4. Customization service.   |

## Descriptions

---

Deep bule iron plating makes it look luxury and dazdling

## Delivery Time & Shipping

---

1. Delivery Lead Time: Within 35 days after the order confirmed; Within 7 days if have goods in stock.
2. Shipping Way: By sea, by air, by express and the delivery agent acceptable as your requirement.

## Payment Terms

---

1. 30% deposit by T / T in advance, the balance after showing the copy of B / L.
2. L/C, Escrow, T/T and Western Union can be acceptable, but different countries different payment terms.

## Customization Service

- 
1. Various designs and sizes.
  2. Process: Electroplating, Iron plating, Color spraying, Screen printing, Decal printing, Frosting, Engraving etc.
  3. Special package as shrink film, color gift box, white gift box, etc.

## Our Strengths

---

1. Nearly 20 years of experience in glass product industry.
2. Certification: ASTM, ISO9001:2008
3. Quality Assurance: strict QC processes enable us to maintain an acceptance rate 99%.
4. Strong Production Capacity: 10 production lines for 15 million pieces monthly; 35 days production lead time.
5. Design team: Over 5000 designs mould existed and 300 new design every year;

## Contact Us

---

For frequently asked questions, please click here [FAQ](#). Or welcome to contact me, Cicy.



**S**  
**SUNNY**

**Shenzhen Sunny Glassware Co., Ltd.**

**Cicy Lin (sales)**

|                    |  |
|--------------------|--|
| <b>Email</b>       | <b><i>sale38@sunnyglassware.com</i></b>  |
| <b>Skype</b>       | <b><i>sunnyglassware38</i></b>           |
| <b>Office Tel.</b> | <b><i>+86-755-25643419(ext. 603)</i></b> |
| <b>Mobile</b>      | <b><i>+86-(0)159-8860-8578</i></b>       |
| <b>WhatsApp</b>    | <b><i>+86-(0)159-8860-8578</i></b>       |

Everything is going on, but don't give up trying



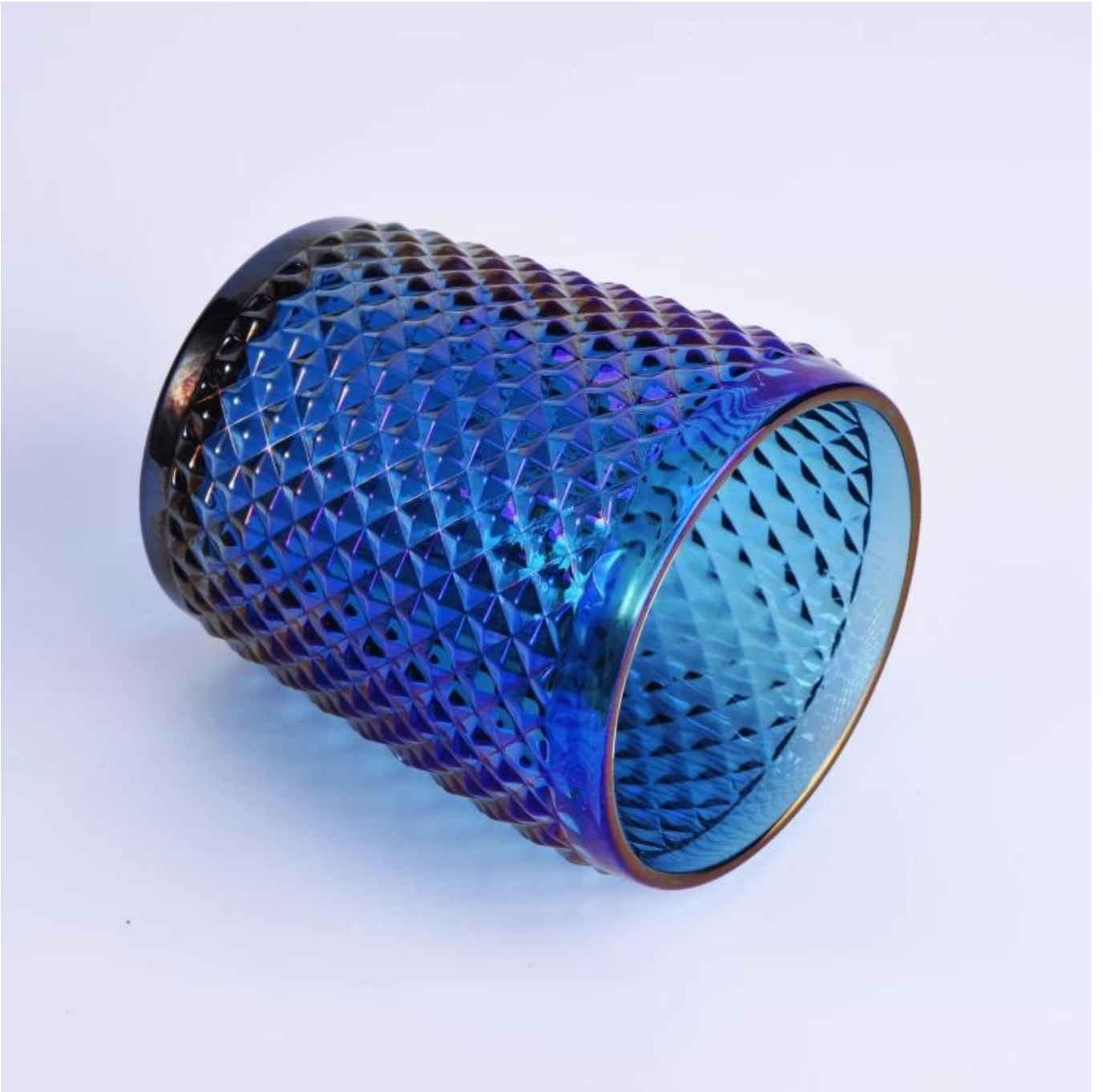
**More Product Pictures**











**More Iron plating glass candle holders**





## Similar Products Link







## Office & Sample Room

[Shenzhen Sunny Glassware Co.,Ltd](#) was established in 1992. We have been in this industry area for more than 20 years, as a professional manufacturer, we specialized in designing glassware, manufacturing glassware as well as exporting. Our products lines range from handmade to machine made. We already produced abundant products such as [glass tumbler](#), [borosilicate glass](#), [shot glass](#), [vase](#), [bowl](#), [candle holder](#), [stemware](#), [ashtray](#), [tableware](#), [drinking glass](#), etc. all the daily use glassware, in total there are more than 4,000 different styles. We have an excellent design team for innovative product creation and strict QC team for quality assurance. OEM/ODM service are supported as well.









