

Big round goblet whisky glasses wholesale

Product Details

Product ID	SWH8113-1
Material	Glass stem glassware
Crafts	Hand made stem glass cup
Product Capacity	1000~5000 units per day
Packing	Normal packing,Individual gift box,PVC box>window box,color box,white box,ect.
Deep Processing	Hand Painting
Sample Time	5-7 days after confirming.
Delivery Time	30-45 days after sample and order confirmed.
Payment Terms	T / T 30% down payment, pay the balance due to see a copy of the bill of lading
Transport	Maritime transport, air transport, international express delivery; guests designated freight forwarding
Product Features	<p>1.Certifications:FDA, Dishwasher Test,SGS, ISO9001</p> <p>2.OEM/ODM Are Available</p> <p>3.usage:Martini whisky glass cup, White Wine Stemware For club,pub or party etc.</p> <p>4.Good service:Customer is the first</p>

More Product Pictures













Hand-painted glass

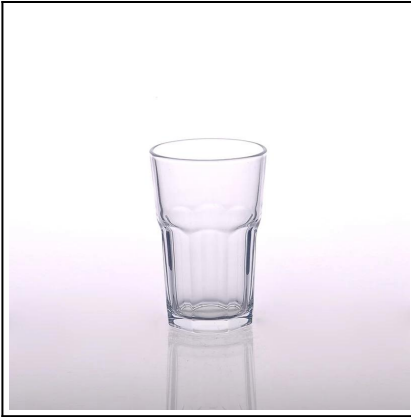


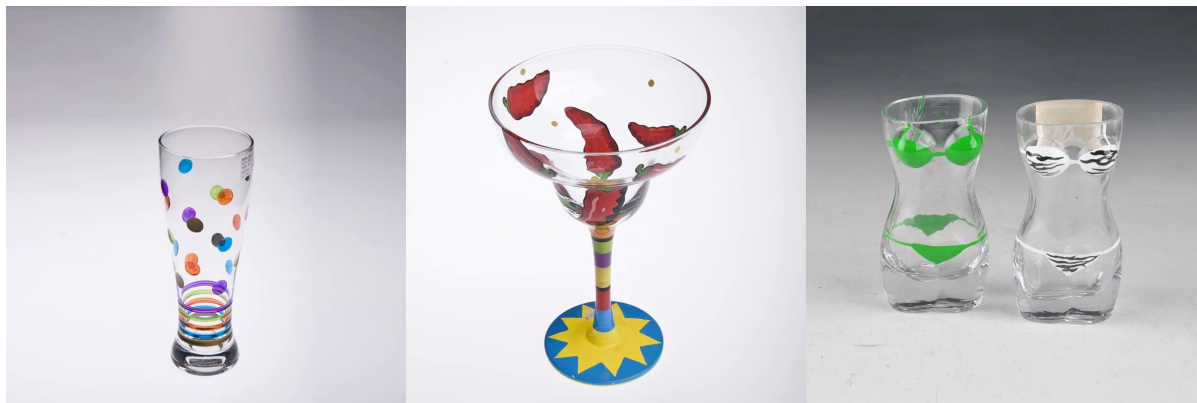
Contact us

For frequently asked questions, please click here [FAQ](#). Or welcome to contact me, Kate.

More Product Pictures







Office & Sample Room

[Shenzhen Sunny Glassware Co.,Ltd](#) was established in 1992. We have been in this industry area for more than 20 years, as a professional manufacturer, we specialized in designing glassware, manufacturing glassware as well as exporting. Our products lines range from handmade to machine made.

We already produced abundant products such as [glass tumbler](#), [borosilicate glass](#), [shot glass](#), [vase](#), [bowl](#), [candle holder](#), [stemware](#), [ashtray](#), [tableware](#), [drinking glass](#), etc. all the daily use glassware, in total there are more than 4,000 different styles.

We have an excellent design team for innovative product creation and strict QC team for quality assurance. OEM/ODM service are supported as well.



Factory Show



