

Decorative Glass Candle Holders Wholesale

Product Details

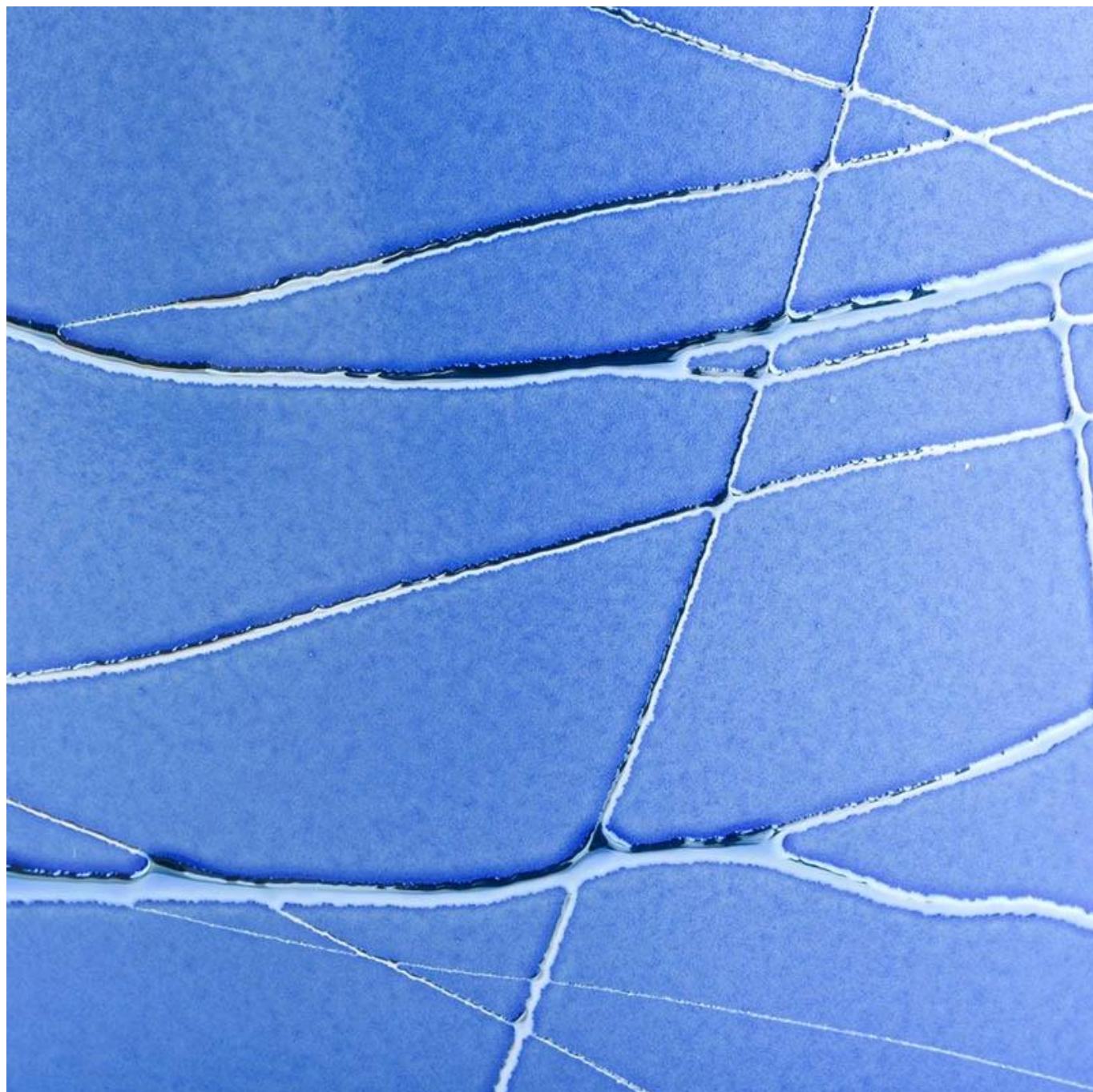
Product Name	Decorative Glass Candle Jars Wholesale
Item number	SGBE19041201
Size	Top dia: 88mm Bottom dia:80mm Height:100mm Weight: 325g Capacity: 410ml
Capacity	10oz 14oz 16oz etc. It's available
Sampling time	1.5 days if the shape and size of the products exist 2.15 days if you need new shape and size of products
MOQ	5000pcs
Delivery time	Within 35 days after the confirmed order
Payment terms	30% deposit by T / T in advance, the balance after showing the copy of B / L
Product features	<ol style="list-style-type: none">1. High quality and competitive prices2. FDA, SGS, LFGB test etc.3. Eco friendly4. It is largely focused on weddings, parties, homes, bars, etc.5. Machine made glass candle holders

More Product Pictures







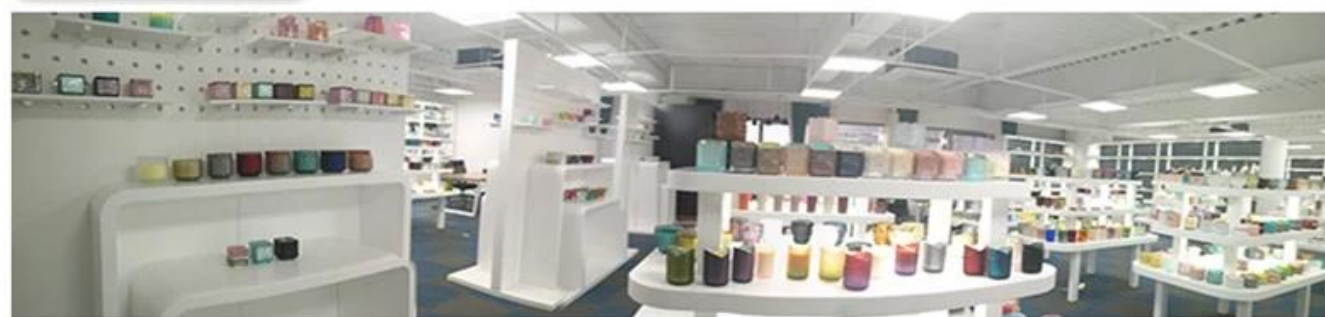






Office & Sample Room





Factory Show



Surface Treatment

10+ production lines



□ Spraying



□ Engraving



□ Electroplating



□ Silk-screen



- Spraying
- Engraving
- Electroplating
- Silk-Screen



The characteristics of blown glass per month

1. Its advantage including abundance sculpture, techniques, surface effects, color etc.
2. Quality is a difficult control and the tolerance of dimensions, weight and shape is greater.
3. The price is high and the product is limited for special technical glass.

Application method

1. Using it under the guidance of the adult
2. Wash it with clean or warm water before use
3. Do not touch the edge of the glass cup, try to take the bottom or the handle of it

Precautions

1. Beer, red wine, white wine, drink or hot water should not be too full
2. To avoid hurting your children's hands, please put them where they cannot reach
3. Avoid falls, collisions and strong impacts
4. Not available for the microwave oven
5. To prevent it from breaking, do not place it directly on the fire

For more [candle holder](#) or any glass,

Please visit our website: <http://www.okcandle.com/>

Or here can help you know better than us: **FAQ**

[We await your request and cooperation.](#)

[Homepage back](#)