

250ml grain glass candle holders



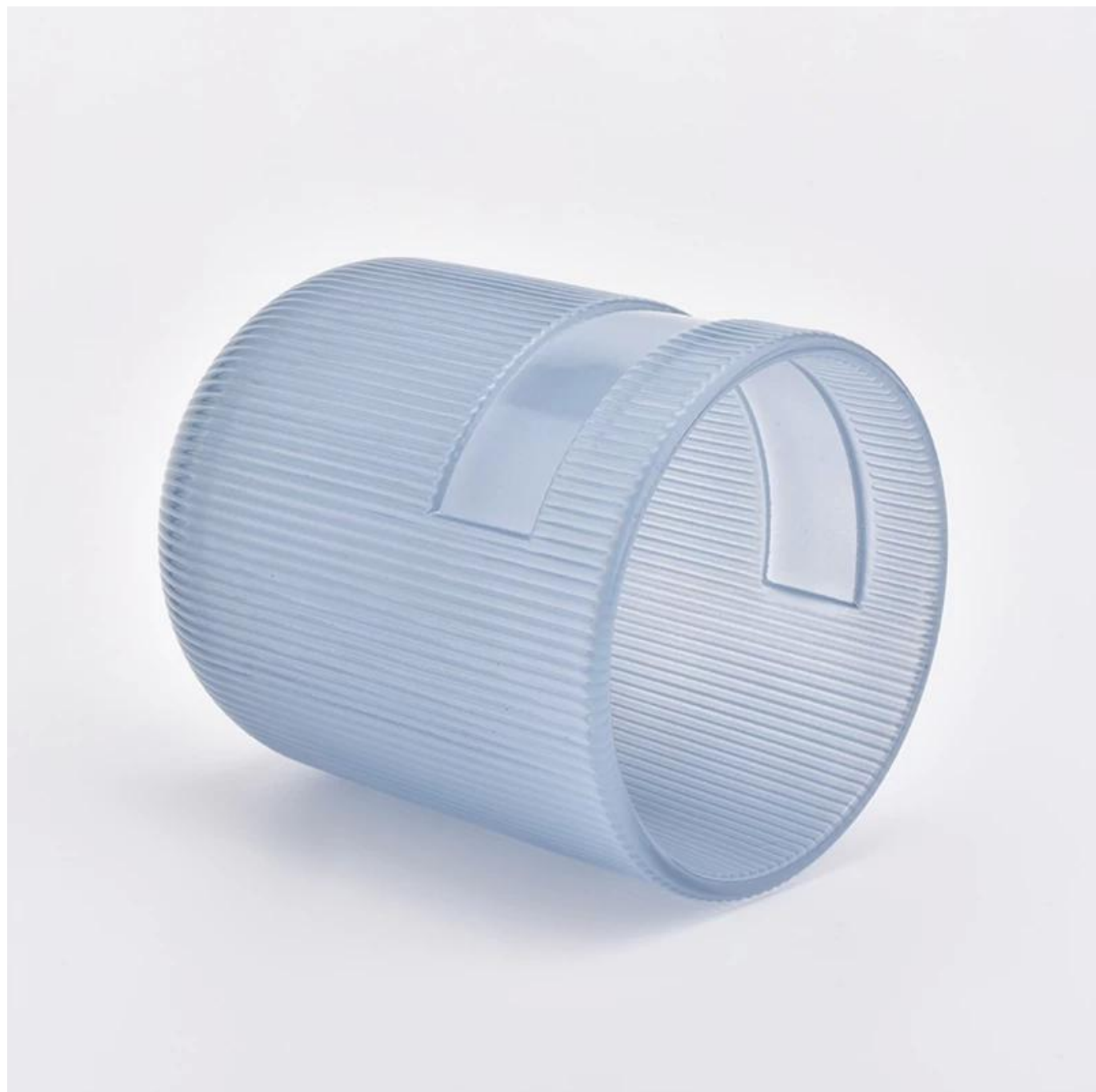
Product Details

Element name	250ml grain glass candle holders
Item number	SGHY19052816
Cut it	Top dia: 74.6mm Bottom dia: 56mm Height: 89.6mm Weight: 276g Capacity: 251ml Sampling time: 5 ~ 7 days after confirmation Other sizes: 5oz / 8oz / 10oz / 16oz. Are also available
Capacity	10oz 14oz 16oz etc. It's available
Sampling time	1.5 days if the shape and size of the products exist 2.15 days if you need new shape and size of products
package	24pcs / 36pcs / 48pcs regular security packing etc. For export carton with egg divider
MOQ	5000pcs
Delivery time	Within 35 days after the confirmed order
Payment terms	30% deposit by T / T in advance, the balance after showing the copy of B / L
Product features	<ol style="list-style-type: none">1. High quality and competitive prices2. FDA, SGS, LFGB test etc.3. Eco friendly4. It is largely focused on weddings, parties, homes, bars, etc.5. mercurry votive glass candle holders



More Product Pictures











Office & Sample Room





Factory Show

01

Factory



Surface Treatment

10+ production lines



□ Spraying



□ Engraving



□ Electroplating



□ Silk-screen



- Spraying
- Engraving
- Electroplating
- Silk-Screen



The characteristics of blown glass per month

1. Its advantage including abundance sculpture, techniques, surface effects, color etc.
2. Quality is a difficult control and the tolerance of dimensions, weight and shape is greater.
3. The price is high and the product is limited for special technical glass.

Application method

1. Using it under the guidance of the adult
2. Wash it with clean or warm water before use
3. Do not touch the edge of the glass cup, try to take the bottom or the handle of it

Precautions

1. Beer, red wine, white wine, drink or hot water should not be too full
2. To avoid hurting your children's hands, please put them where they cannot reach
3. Avoid falls, collisions and strong impacts
4. Not available for the microwave oven
5. To prevent it from breaking, do not place it directly on the fire

For more [candle holder](#) or any glass,

Please visit our website:<http://www.okcandle.com/>

Or here can help you know better than us: [FAQ](#)

[We await your request and cooperation.](#)

[Homepage back](#)