

## 1L ceramic black guitar decorated candle jars

### Product Details

Element name	1L ceramic black guitar decorated candle jars
Item number	SGMK19030114
Cut it	Top dia: 134mm Bottom dia: 93mm Max dia: 146mm Height: 98mm Weight: 573g Capacity: 1000ml  Other sizes: 5 ounces / 8 ounces / 10 ounces / 16 ounces are also available
Capacity	10oz 14oz 16oz etc. It's available
Sampling time	1.5 days if the shape and size of the products exist 2.15 days if you need new shape and size of the products
package	24pcs / 36pcs / 48pcs security regular packing and so on. For export carton with egg divider
MOQ	3000pcs
Delivery time	Within 35 days after the order confirmed
Payment terms	30% deposit by T / T in advance, the balance after showing the copy of B / L
Product features	1. High quality and competitive prices 2. Test of FDA, SGS, LFGB etc. 3. Eco friendly 4. It is widely aimed at weddings, parties, home, bars, etc. 5. machine made

### More Product Pictures







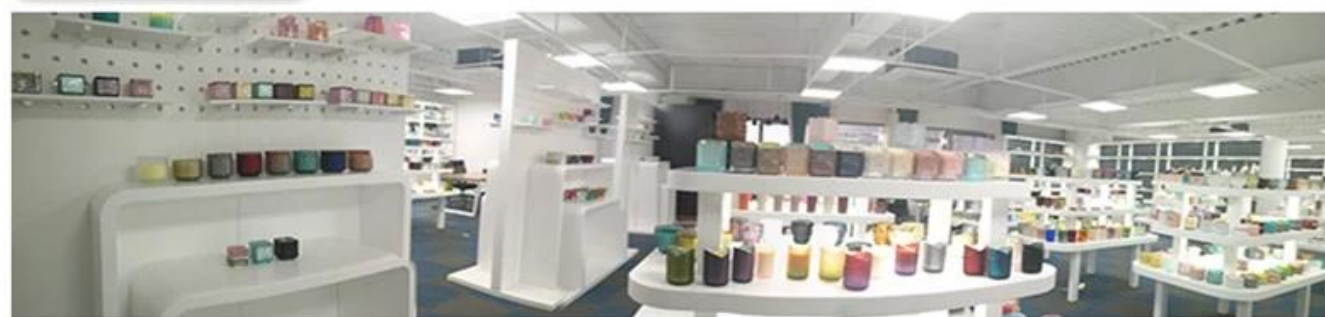






Office & Sample Room





Factory Show

## \* Production Process



▶ Sculpture



▶ Make Moulds



▶ Inject Clay



▶ Shape forming



▶ Roller Forming



▶ Body Finishing



▶ First Firing



▶ Hand Painting



▶ Decaling



▶ Glazing



▶ Decor Firing



▶ Packing



▶ Warehouse



▶ Loading



▶ Shipping



### The characteristics of the blown glass a month

1. Its advantage including sculpture of abundance, techniques, surface effects, color etc.
2. Quality is a difficult check and tolerance of size, weight and shape is greater.
3. The price is high and the product is limited for special technical glass.

### Application method

1. Using it under the guidance of the adult
2. Wash it with clean or warm water before use
3. Do not touch the edge of the glass cup, try taking the bottom or the handle of it

### Precautions

1. Beer, red wine, white wine, drink or hot water should not be too full
2. To avoid hurting your children's hand, please put them where they can not reach
3. Avoid falls, collisions and strong impacts
4. Not available for microwave oven
5. To prevent it from breaking, do not put it directly on the fire

For more [candle holder](#) or any glass,

Please visit our website: <http://www.okcandle.com/>

Or here it can help you know better than us: [FAQ](#)

[We await your request and cooperation.](#)

[Homepage back](#)