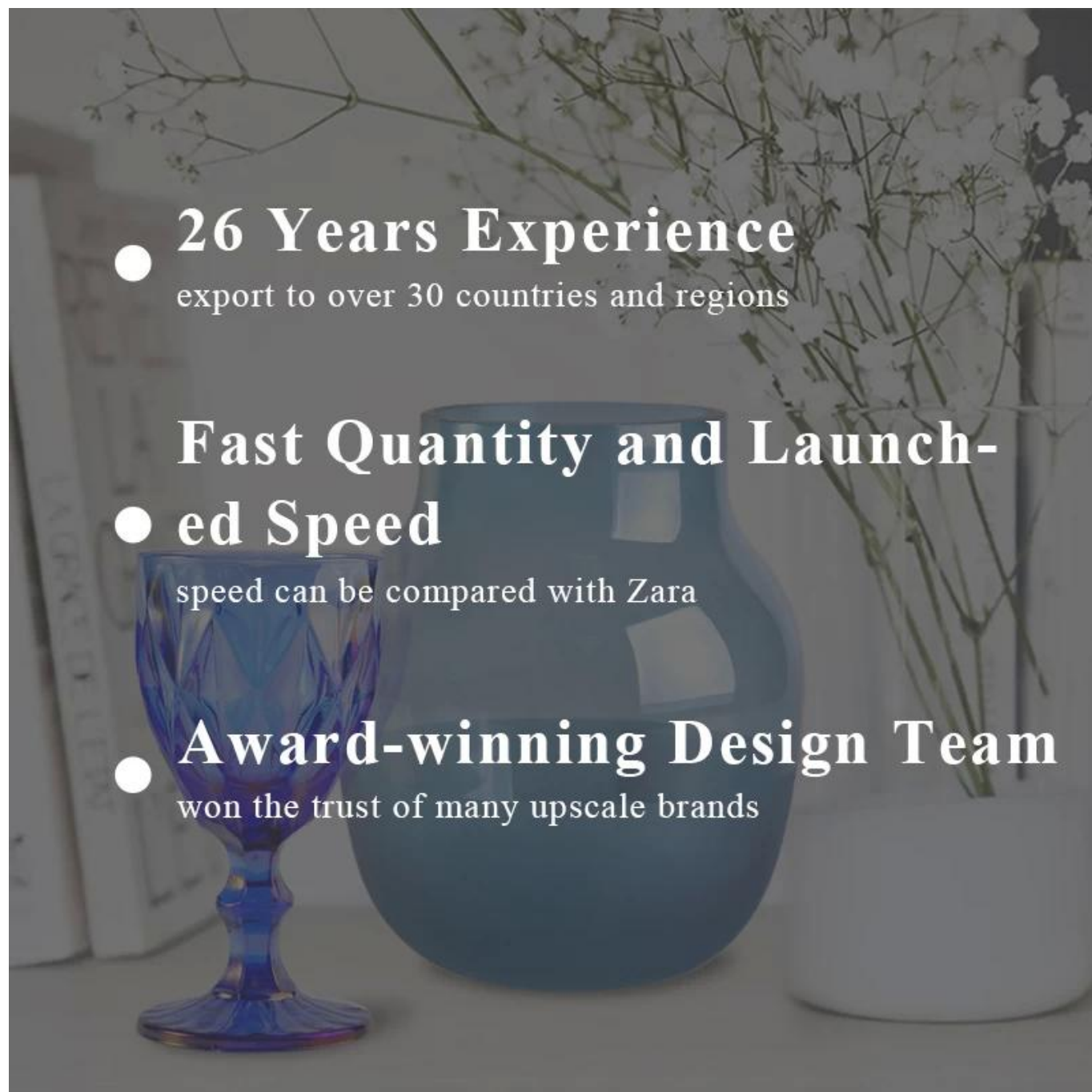


hurtowo gruba szklana świeca z paskiem

Sunny Glassware nie tylko wytwarza zamówienia OEM / ODM, ale także pomaga wielu markom zacząć od koncepcji produktu.



- **26 Years Experience**  
export to over 30 countries and regions
- **Fast Quantity and Launch-  
ed Speed**  
speed can be compared with Zara
- **Award-winning Design Team**  
won the trust of many upscale brands

**Dlaczego warto wybrać słońce?**

---



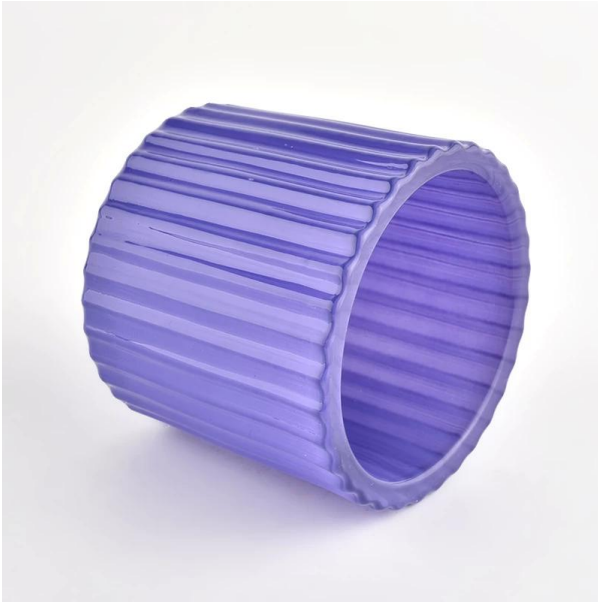
### Główna zaleta

- . Skoncentruj się na luksusowym projekcie
- . Około 80% amerykańskich dostawców marki perfum
- . AQL plus 6 surowych rygorystycznych standardów testowych QC
- . Zachowaj produkty jakościowe oraz próbki i masowe

Top Dia: 90 mm  
Dolna Dia: 83 mm  
Wysokość: 78 mm  
Pojemność: 291 ml.  
Waga: 438G

Tłumaczymy Twoje pomysły na produkty kreatywnych przypraw, sprzedajemy się na lokalnym rynku.





### **Funkcja produktu**

1. Wysokiej jakości domowe dekoracyjna butelka kadzidełka.
2. Majątek do hotelu, ślubu itp.
3. spełnij funkcję produktów testowych ASTM.

### **Pozwól ci wybrać**

1. Dostępne są różne rysunki i rozmiary.
2. Wszelkie malowane, cięcia, poszycie, modele laserowe narzędzie do przetwarzania.
3. Obniżność filmu, kolorowe pudełko prezentowe, białe pudełko na prezent i inne specjalne opakowania. Mamy komitet kontroli jakości.
5. Mamy seminaria i profesjonalne magazyny, aby zapewnić czas dostawy.

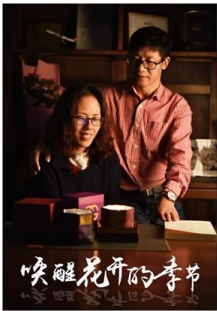


- . Dekoracyjny obiad w barze lub barze
- . Odpowiednie dla rodzin, hoteli lub ogrodów
- . Prezent specjalnego kochanka
- . Wszelkie szanse na dekorację



## Historia.

### Company Profile



**Sunny Glassware** was established by Frank and Alice for more than 25 years, which provide a leading excellent combination between prices, quality & responsiveness in glassware industry.

Sunny keep engaged in glassware designing and manufacturing, there are more than 10 product lines available from hand blown craft to machine pressed, machine blown and IS machine made etc., and various kinds of deep processing technologies can be customized such as color sprayed, laser printing, decal print, electroplate, frosted, screen printing, sandblasted and ion plating etc. **ISO 9001:2008/2015, Enterprise Intellectual Property** and **Green & Social Compliance Statement** certificates were issued by the third-party certification companies.

There are about 5,000 items which cover all daily-used glassware and ceramic ware, e.g. candle holders, borosilicate glass, bottles, tumblers, jars, stemware, tableware & drinkware, bathroom accessories etc. The products can meet **FDA, LFGB, CA 65, ASTM, dishwasher test**.

With a strictly control system on product quality and customer service, our exporting market have expanded rapidly to North & South America, Europe, Oceania and Asia.

Our business scopes are mainly involved in home decor, gift crafts and tableware. There are **approximately 80% candle holders in USA luxury branded companies** were imported from Sunny Glassware.

## Czym tam jesteśmy?

Sunny Glatwares zatwierdził certyfikat systemu zarządzania jakością ISO 90012008/2015 i wdrożył standardy własności intelektualnej firmy w celu ochrony interesów jej klientów.





ISO 9001: 2015



Własność intelektualna przedsiębiorstwa

Numer patentowy: 201630655323.4

# DEEP PROCESSING



Electroplating



Laser Engraving



Spraying



Decal Printing



Mercury Finish



Iridescent



Foiling



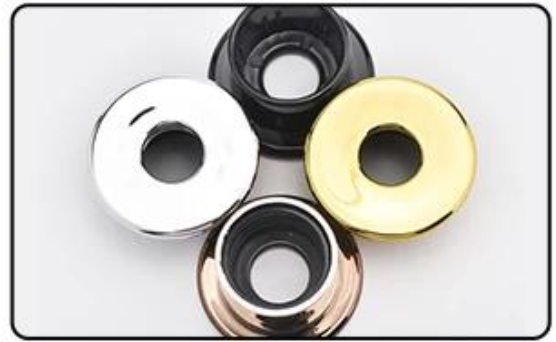
Screen Printing



Frosted



Sandblasted



## Próbka wyświetlacza pokoju

Witamy w biurze Shenzhen, aby znaleźć ulubionego, zaskoczy cię, ponieważ trudno jest znaleźć innego dostawcę w Chinach.





## Pakettransport

---

# PACKAGING & SHIPPING



## ADVANTAGE

---

1.OEM/ODM

2.High Quqlity and Competitive Price

3.After-sale service

# FAQ

Q1: Do you accept small order?

Yes, any quantity would be acceptable if we have stocks.

Q2: Do you have any other colors/sizes for this kind of jar?

Any colors can be customized according to pantone number or your sample, the we have some hot sale regular sizes for you to choose, if you want to make new sizes we can also open new molds.

Q3: What kind of lids you can offer?

We can provide lids in different materials like glass, ceramic, metal, wood, concrete and plastic ect.

Q4: Do you have certification for your products?

Yes, for the glassware, have ASTM. CA65 test , FDA etc.

Q5: Do you accept Third party inspection?

Yes,we accept it.It's the normal way for many clients.

Q6: How to ensure the production quality is what I need?

We will do the production and inspect the goods by sample we both approved. If you have more requirement for the product quality,we should discuss the quality standard before we place the order.

Q7: How could I get a sample?

We offer free samples for those we keep in stock, for custom samples we need 7~10 to get samples ready. Sample fee could be pay by Paypal, Alibaba, or bank.

Q8: What's your MOQ of ceramic jars?

The moq of a single order is 3000 pcs, 1000 pcs each color is acceptable

Q9: Why your sample cost is so expensive?

Sample cost is mainly for labor cost, it is not equal to unit price.

Q10: Could you arrange shipment for us together?

Yes, we can. We have a professional logistics department which help many of our customers handle shippments, if you need we arrange shipping, please tell us your company or warehouse address and we can quote DDU price to you check together



