


# Wholesale square clear glass candle holders

## Product Details

	Item name	<a href="#">Wholesale square clear glass candle holders</a>
	Item No.	SGLYP17042409
	Size	Top dia□99*99mm Bottom dia□90*90mm Height□97mm Weight□599g Capacity□609ml
	Description	Machine made, V-shape, Round, for candle holder/for glass cups
	Sample time	1. 5 days if at exist shape and size of products 2. 15 days if need new shape and size of products
	Packing	Normal safety packing 24pcs/36pcs/48pcs etc. per export carton with egg divider
	MOQ	10000pcs
	Delivery time	Within 35 days after order confirmed
	Payment terms	30% deposit by T/T in advance, the balance after showing the copy of B/L
	Product feature	1. High quality and competitve prices 2. Meet ASTM, Leading free 3. Eco-friendly 4. Widely apply to Wedding, party, home, bar etc. 5. Machine made

## More Product Pictures

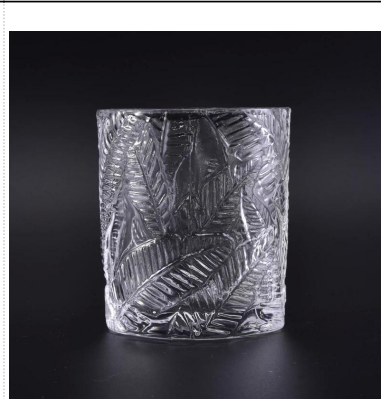
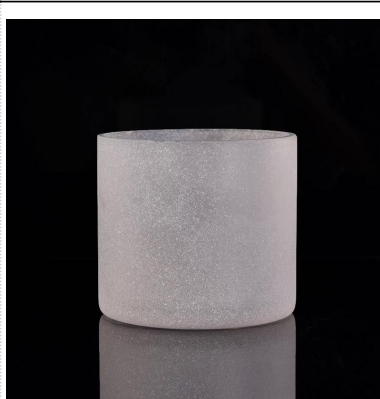
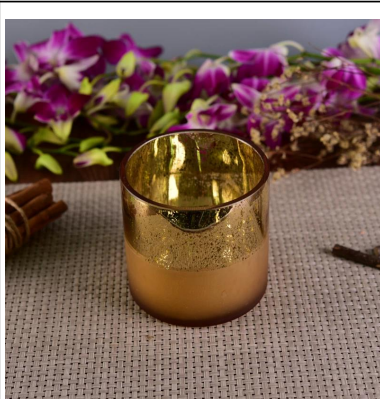








[Similar Products Link](#)



## Office & Sample Room

[Shenzhen Sunny Glassware Co.,Ltd](#) was established in 1992. We have been in this industry area for more than 20 years, as a professional manufacturer, we specialized in designing glassware, manufacturing glassware as well as exporting. Our products lines range from handmade to machine made. We already produced abundant products such as [glass tumbler](#), [borosilicate glass](#), [shot glass](#), [vase](#), [bowl](#), [candle holder](#), [stemware](#), [ashtray](#), [tableware](#), [driking glass](#), etc. all the daily use glassware, in total there are more than 4,000 different styles. We have an excellent design team for innovative product creation and strict QC team for quality asurance. OEM/ODM serverice are supported as well.



## Factory Show





# ASTM



Order Guide





Personalized Services	<ol style="list-style-type: none"> <li>1.Allowed printing your logos or brand name.</li> <li>2.Any color can be selected freely for you.</li> <li>3.Any design can be made from you with us.</li> <li>4.Processing like silk-screen, change color, gilt, frost, engrave, electroplate, etc.</li> <li>5.Professional Packaging like color box,PVC packing,window packing,gift packing</li> <li>6.All the terms are negotiable.</li> </ol>
Strong Points	<ol style="list-style-type: none"> <li>1. More than 23 years experience in glassware business</li> <li>2. Machine-pressed, hand-blown or machine blown are available.</li> <li>3. Over 5000 designs mould existed and 300 new design development every year.</li> <li>4. Own decoration production factory and stable components, package, freight suppliers.</li> <li>5. Strict quality control system and inspection standard</li> <li>6. Quick feedback and best after sales all the time</li> </ol>

## FAQ Here

1) Can you combine many items assorted in one container in my first order?

Yes, we can. But the quantity of each ordered item should reach our MOQ.

2) If any quality problem, how can you settle it for us?

When discharging the container, you need to inspect all the cargo. If any breakage or defect products were founded, you must take the pictures from the original carton. All the claims must be presented within 15 working days after discharging the container. This date is subject to the arrival time of container.

3) why you choose us?

1. We have rich experiences in glassware trade for more than 20 years and the most professional team.

2. We have 10 production line and can manufacture 15 million pieces per month, we have strict processes enable us to maintain an acceptance rate above 99% .

3. We work with more than 1800 clients in about 80 countries.

4) How about your MOQ?

Different kind products will be different MOQ, for some glassware in stock, small orders are acceptable.

5) How many people in your R&D department?

We have 5 professional designers, and they will develop 15 innovative designs monthly.

6) Can you give me a discount about the price?

The price depends on your quantity, if you want good price with small order, you can make more quantity in one time, and leave them in our warehouse, we will keep the goods for you until you need.



**Shenzhen Sunny Glassware Co., Ltd.**

Sales: Lydia Li  
Tel: + 86 15071235950  
Email: sales9@sunnyglassware.com  
Skype: sunnyglassware051  
Whatsapp: 18867570923

<http://www.okcandle.com>

The business card features a light green background. On the right side, there is a circular illustration of a fishbowl containing two goldfish, with several red hearts floating above it. In the top right corner, there is a small square QR code with a portrait of a woman in the center.



[Homepage back](#)