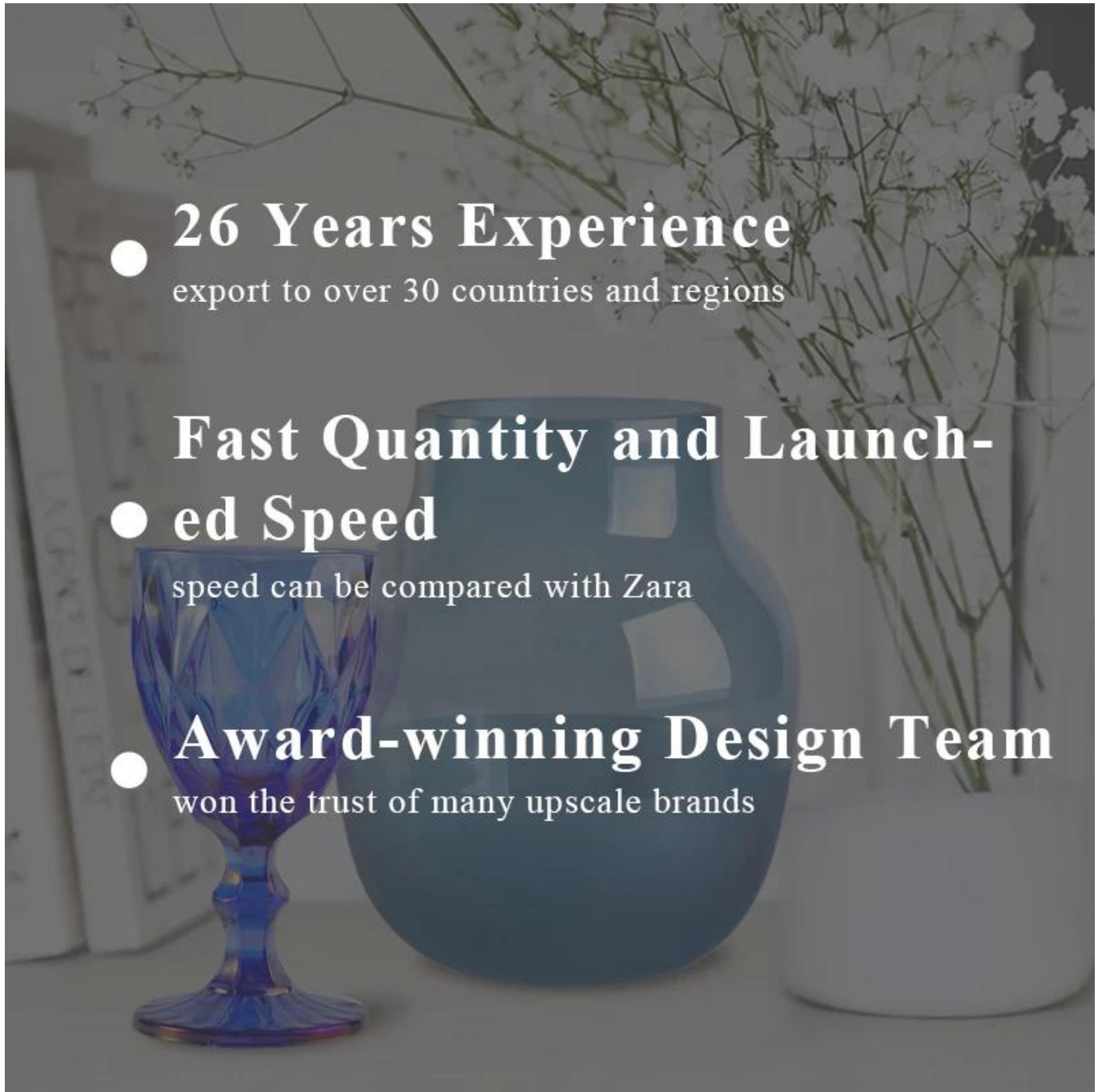


XX

Sunny Glassware OEM / ODMXX

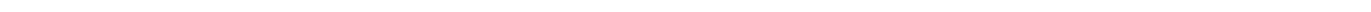


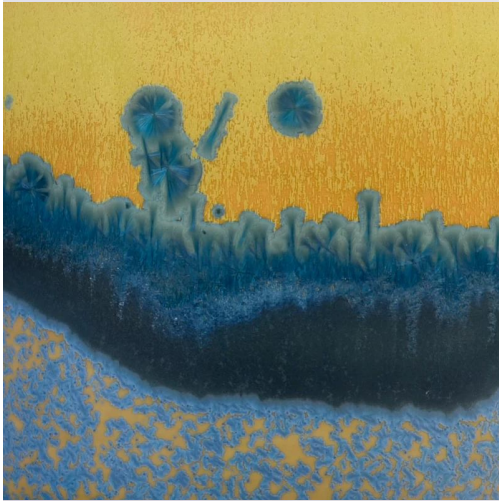
● **26 Years Experience**
export to over 30 countries and regions

● **Fast Quantity and Launch-
ed Speed**
speed can be compared with Zara

● **Award-winning Design Team**
won the trust of many upscale brands

XXXXXXXXXXXX





ACCESSORIES SHOWS



Wooden Lid



Cork Lid



Zinc Alloy Cover



Wick Trimmer Cutter

□□□□□□□□□□
□□□□□□□□□□□□
□□□□□□□□□□
□□□□□□□□

DEEP PROCESSING



Electroplating



Solid color glaze



Hand painting



Decal Printing



Stamping



Transmutation glaze



Screen Printing



Water Transfer Printing



□□□□□□□□

PACKAGING & SHIPPING



ADVANTAGE



1.OEM/ODM

2.High Quqlity and Competitive Price

3.After-sale service

FAQ

Q1: Do you accept small order?

Yes, any quantity would be acceptable if we have stocks.

Q2: Do you have any other colors/sizes for this kind of jar?

Any colors can be customized according to pantone number or your sample, the we have some hot sale regular sizes for you to choose, if you want to make new sizes we can also open new molds.

Q3: What kind of lids you can offer?

We can provide lids in different materials like glass, ceramic, metal, wood, concrete and plastic ect.

Q4: Do you have certification for your products?

Yes, for the glassware, have ASTM. CA65 test , FDA etc.

Q5: Do you accept Third party inspection?

Yes,we accept it.It's the normal way for many clients.

Q6: How to ensure the production quality is what I need?

We will do the production and inspect the goods by sample we both approved. If you have more requirement for the product quality,we should discuss the quality standard before we place the order.

Q7: How could I get a sample?

We offer free samples for those we keep in stock, for custom samples we need 7~10 to get samples ready. Sample fee could be pay by Paypal, Alibaba, or bank.

Q8: What's your MOQ of ceramic jars?

The moq of a single order is 3000 pcs, 1000 pcs each color is acceptable

Q9: Why your sample cost is so expensive?

Sample cost is mainly for labor cost, it is not equal to unit price.

Q10: Could you arrange shipment for us together?

Yes, we can. We have a professional logistics department which help many of our customers handle shippments, if you need we arrange shipping, please tell us your company or warehouse address and we can quote DDU price to you check together

