

□□□□□□□□□□□□□□□□□□□□

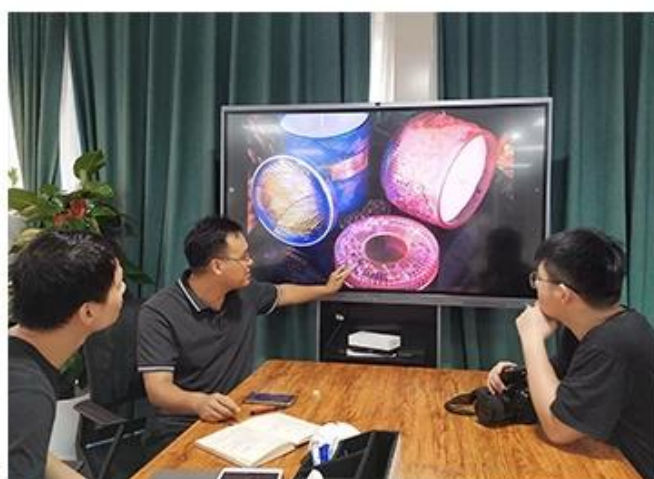


No second Co.in China

Such a large and abundant sample room

No second Co.in China

Our design team achieve Customers' Ideas
becoming creative fragrance
products and sell them very well



No second Co.in China

Our QC is more QC
than our customer's QC

□□□□ □□□□

DEEP PROCESSING



01

ELECTROPLATING

02

LASER ENGRAVING



03

SPRAYING

04

VACUUM
ELECTROPLATING



05

SCREEN PRINTING



Product Details

Sunny Glassware



Product Description

This is a clear glass vase with a heart-shaped design. It features a central heart and four surrounding heart shapes. The vase is made of high-quality glass and is suitable for use as a decorative piece or for holding flowers. It is available in a size of 80mm and is made of AQL 6mm glass. The vase is tested to meet QC standards and is suitable for use in a variety of settings.

Product Features

- SG (Safety Glass)
- NEST (Nested Design)
- Heart Shape
- Clear Glass





□□□□□□ & □□

Different From The Peer

Own professional shipping company(Shenzhen Sunny Worldwide logistics)



20+ years freight history and WCA members.



PACKING



Gift box



Carton



Pallet

We have Normal packing,PVC box,Window box,carton box,pallet
Color box,White box,ect.
of course,we can customize Individual gift box for you.



Wooden case



Office & Sample Room

1,800

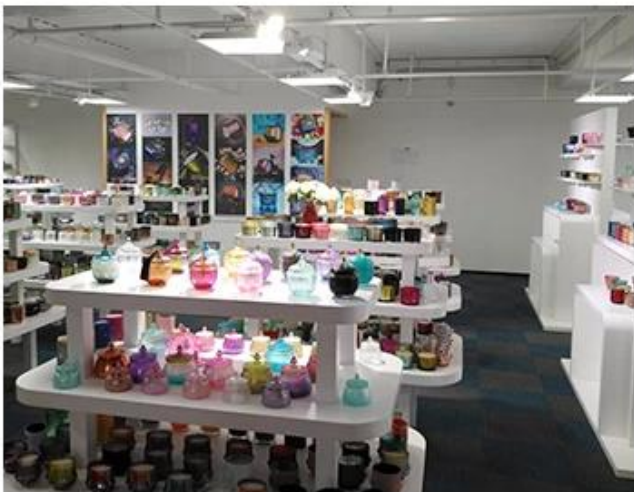


Meiyang Glass

Meiyang Glass 5000

SAMPLE ROOM

There are more than 5000 products in
sample room of Sunny Glassware
for your reference. No second Co. in China!



Factory Show

☐ ☒ ☒

FACTORY

There are about 20000 square meters in our factory
which was built in 1992 year;
Superior quality and high efficiency
can be guranteed.



CERTIFICATIONS

