

 More Product Pictures

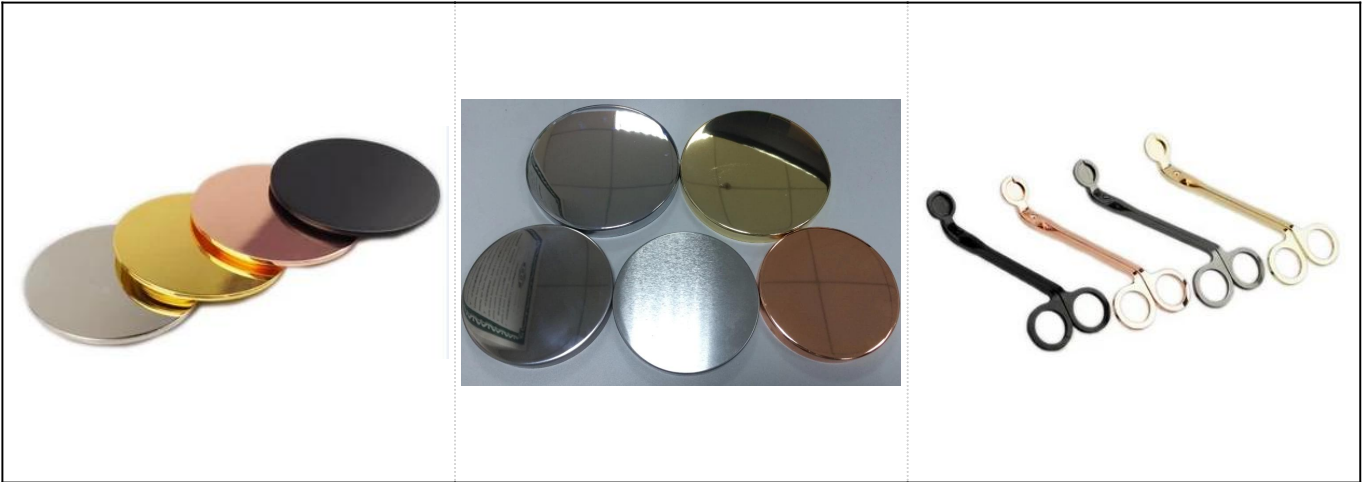


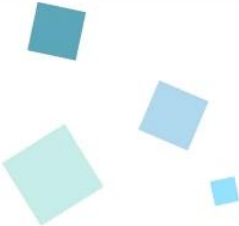






□□□□□□□□





- [illegible]

Shenzhen Sunny Glassware Co.,Ltd

Company Profile



Sunny Glassware was established by Frank and Alice in 1992, which provide a leading excellent combination between prices, quality & responsiveness in glassware industry.

Sunny keep engaged in glassware designing and manufacturing, there are more than 10 product lines available from hand blown craft to machine pressed, machine blown and IS machine made etc., and various kinds of deep processing technologies can be customized such as color sprayed, decal print, electroplate, frosted, screen printing, sandblasted and ion plating etc. **ISO 9001:2008** and **Green & Social Compliance Statement** certificates were issued by the third-party certification companies.

There are about 4,000 items which cover all daily-used glassware, e.g. borosilicate glass, glass bottles, glass tumblers, candle glass, glass jars, stemware, tableware & drinkware etc. The products can meet **FDA, LFGB, CA 65, ASTM, dishwasher test**.

With a strictly control system on product quality and customer service, our exporting market have expanded rapidly to North & South America, Europe, Oceania and Asia.

Our business scopes are mainly involved in home decor glass & tableware glass. Especially in the USA and Europe market, Sunny is trusted by Illume Candles, Nest Fragrance and Partylite etc. for fragrance glass. We had cooperated with clients from EU, Australia on promotion projects for Tempo, PEPSI, Wal-Mart, IKEA, Chivas, AVON, Johnnie walker, Carlsberg, Lipton and other brands etc.



□□□□□□



Powerful Capacity

Innovative Design



Quality Assurance

Unique Products



—To be your **Reliable**
Supplier



□□□□□□□□□□

Sample Room



4,000+ Items for Choice



□□□□

SUNNY

ASTM



