

XXXXXXXXXXXXXXXXXXXX



## Product Details

Product ID	sglyp17042220
Dimensions	Height: 82 Width: 120mm Depth: 100mm Weight: 255 Capacity: 805ml
Material	XXXXXXXXXXXXXXXXXXXX
Color	XXXXXXXXXXXXXXXXXXXX
Quantity	20000 units / 5000 boxes
Specifications	<ol style="list-style-type: none"> <li>XXXXXXXXXXXX containers</li> <li>XXXXXXXXXXXXXXXXXXXXXXXXXXXX</li> <li>XXXXXXXXXXXXXXXXXXXX</li> <li>XXXXXXXXXXXXXXXXXXXX</li> <li>XXXXXXXXXXXXXXXXXXXXXXXXXXXXXXXXXXXX</li> </ol>
Standards	astm / annealing

### XXXXXXXXXXXX

- XXXXXXXXXXXX: XXXXXXXXXXXX35XXXX;7XXXXXXXXXXXX
- XXXXXXXXXXXX: XXXXXXXXXXXXXXXXXXXXXXXXXXXXXXXXXXXXXXX

### XXXX

- t/t XXX 30% XXXXXXXXXXXXb/l XXXXXXXXXXXXXXX
- l/c XXXXXXXXXXXXt/t XXXXXXXXXXXXXXXXXXXXXXXXXXXXXXX

### XXXXXXXXXXXX

- XXXXXXXXXXXXXXXXXXXX
- XXXX: XXXXXXXXXXXXXXXXXXXXXXXXXXXXXXXXXXXXXXX
- XX

### XXXXXXXXXXXX

- XXXXXXXXXXXXXXXXXXXX20XXXX
- XXXX: astm iso9001: 2008
- XXXX: XXX qc XXXXXXXXXXXXXXX 99% XXXXXXXXXXXXXXX

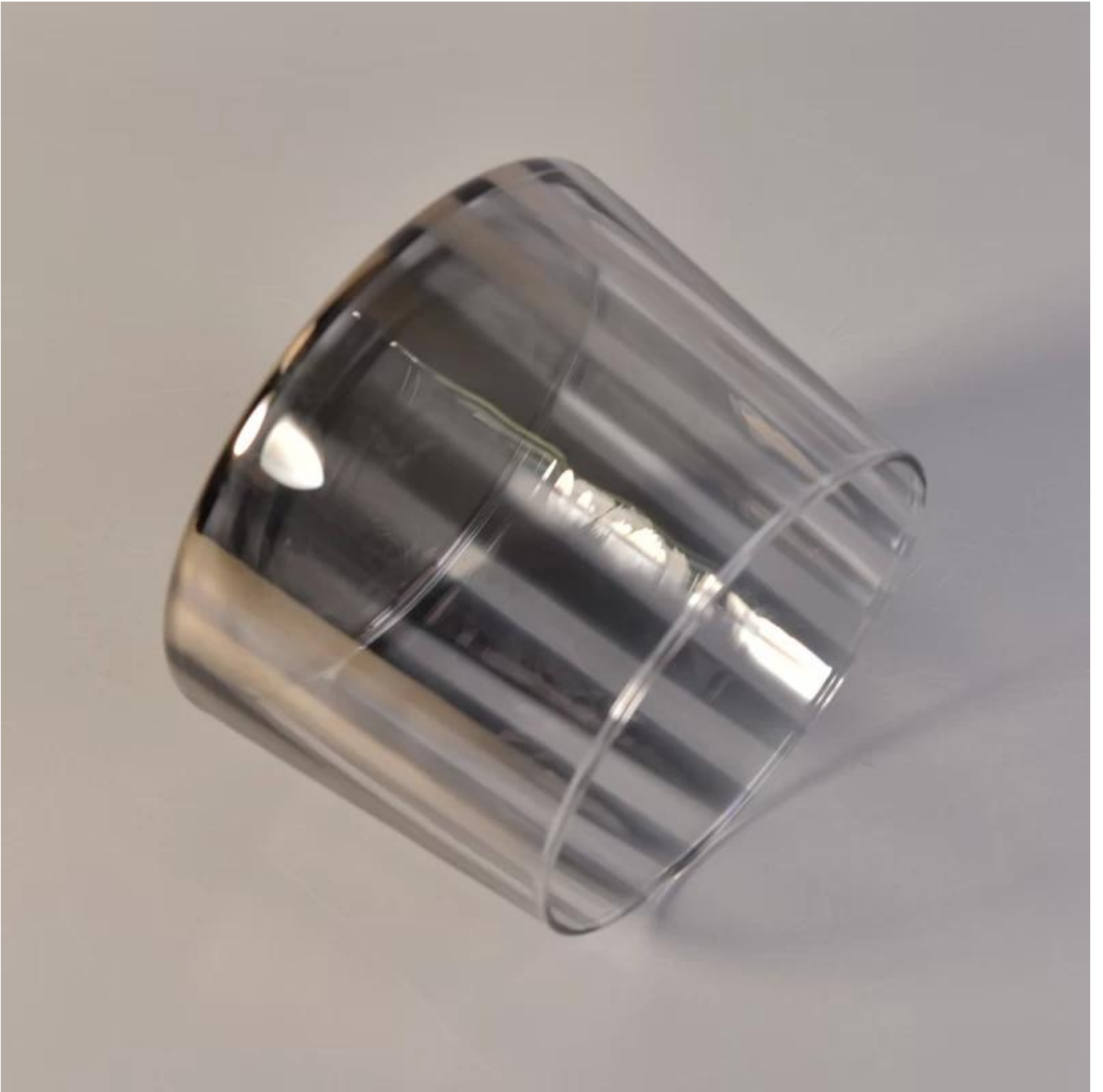
4. 重量: 15000000 重量10重量;35重量

5. 重量: 5000 重量300重量;



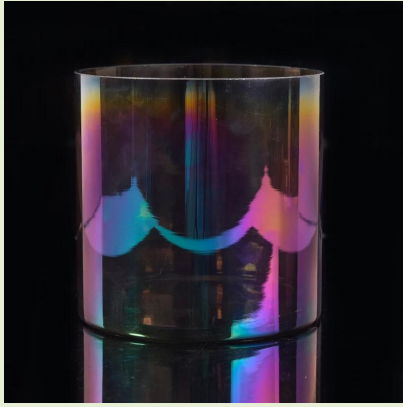
More Product Pictures





Similar Products Link





Office & Sample Room



# Factory Show







1. □□□□□□□□□□□□□□□□

2.  [candlestick patterns](#)
3.  [candlestick patterns](#)
4.  [candlestick patterns](#)
5.  [candlestick patterns](#)

[candlestick patterns](#)  [candlestick patterns](#)

[candlestick patterns](#): <http://www.okcandle.com/>

[candlestick patterns](#)  [candlestick patterns](#)  [candlestick patterns](#) **FAQ**

[candlestick patterns](#)

