



Product Details



①

Service

- *Quick response*
- *Offer 360 degree solutions*
- *OEM/ODM support*

②

Professional Team

- *Excellent design team*
- *Strict QC team*
- *Experienced after-sales team*

③

Powerful Capacity

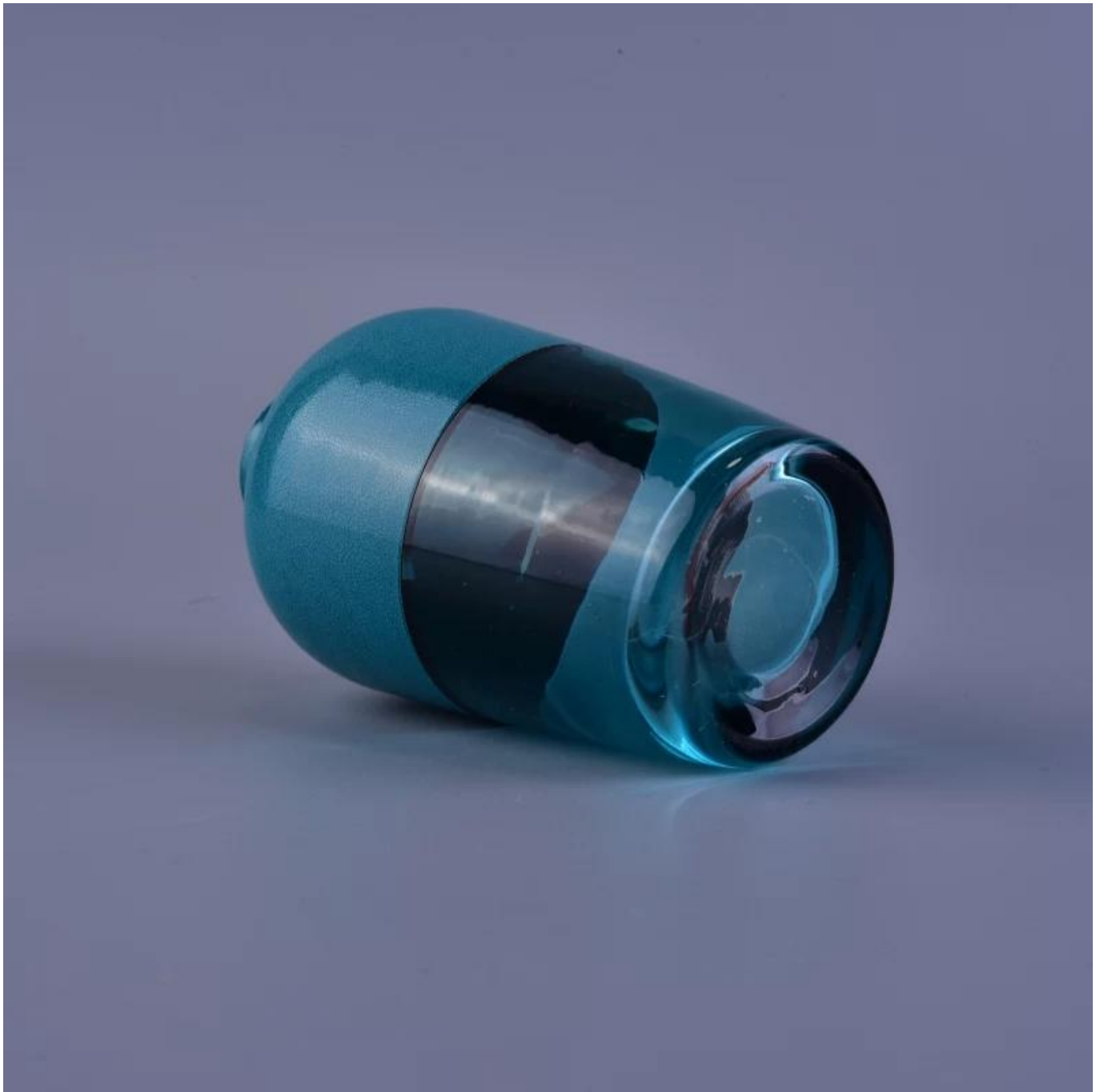
- *4000+ items for choice*
- *14.4 million PCS supply per month*











Similar Products Link



Office & Sample Room





Factory Show





