


## nuovi portacandele ceramici arrivati



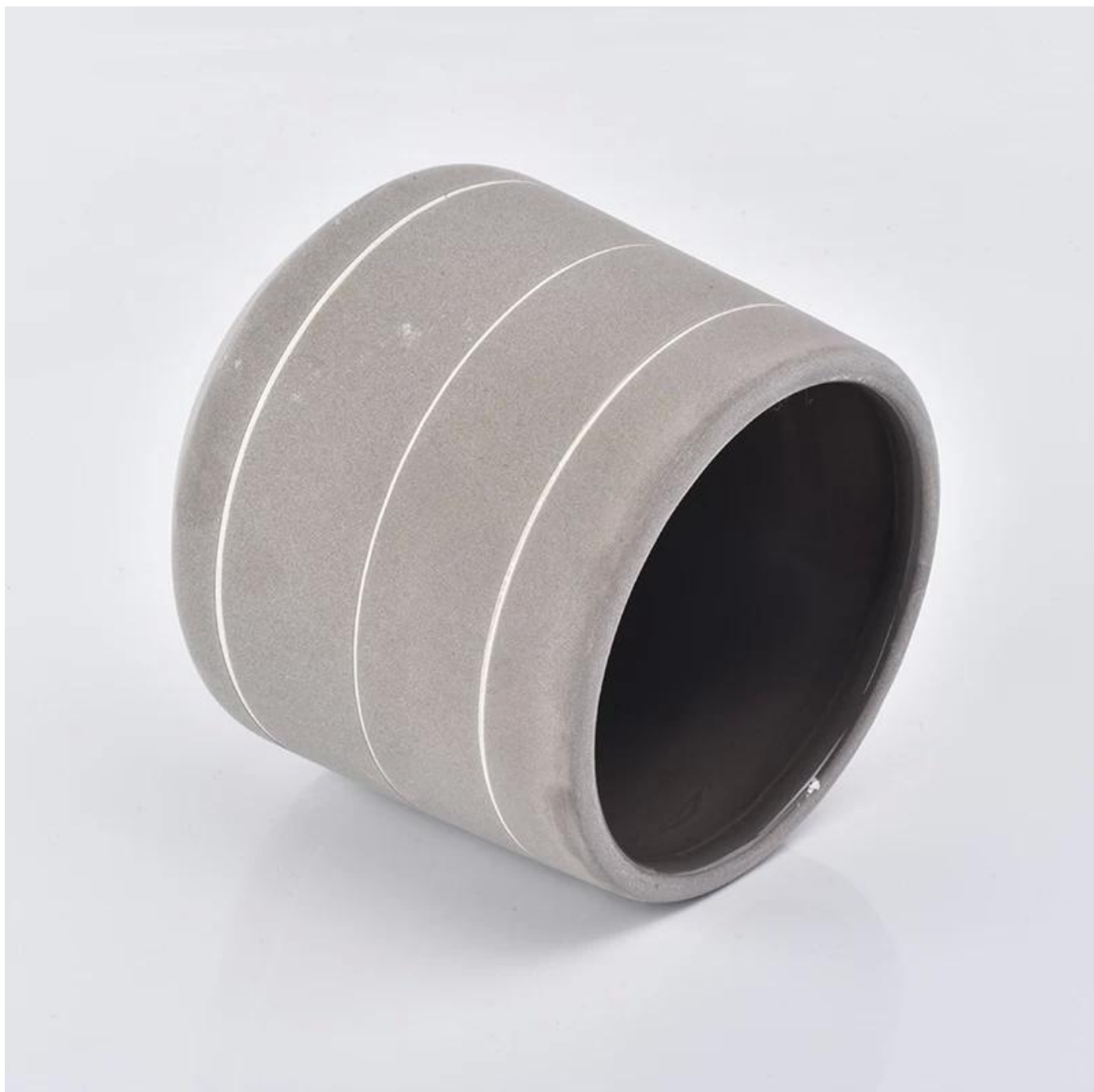
### Product Details

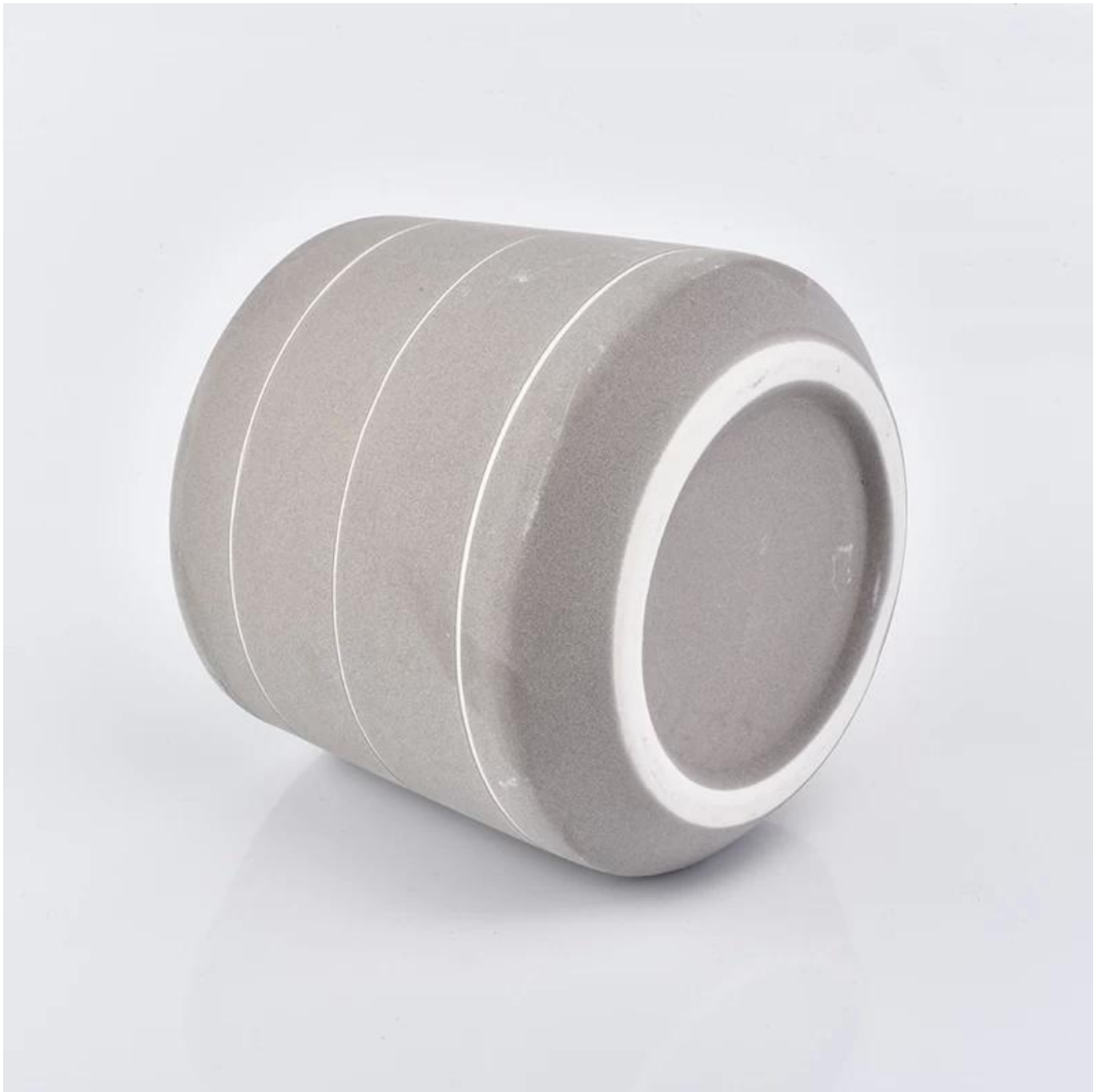
Nome dell'elemento	nuovi portacandele ceramici arrivati
Codice articolo	SGGH19011602
Taglia	Diametro superiore: 92 mm Diametro inferiore: 103mm Altezza: 93mm Peso: 252 g Capacità: 495 ml  Altre dimensioni: sono disponibili anche 5 once / 8 once / 10 once / 16 once
Capacità	10oz 14oz 16oz ecc. È disponibile
Tempo di campionamento	1,5 giorni se la forma e la dimensione dei prodotti esistono 2.15 giorni se avete bisogno di nuova forma e dimensione dei prodotti
pacchetto	Imballaggio regolare di sicurezza 24pcs / 36pcs / 48pcs ecc. Per cartone da esportazione con divisore per uova
MOQ	3000pcs
Tempo di consegna	Entro 35 giorni dopo l'ordine confermato
Termini di pagamento	Deposito del 30% da T / T in anticipo, il saldo dopo aver mostrato la copia di B / L
Caratteristiche del prodotto	<ol style="list-style-type: none"><li>1. Alta qualità e prezzi competitivi</li><li>2. Test di FDA, SGS, LFGB ecc.</li><li>3. Eco amichevole</li><li>4. È ampiamente mirato a matrimoni, feste, casa, bar, ecc.</li><li>5. fatto a macchina</li></ol>



### More Product Pictures











storage product ranges.

"The easiest way to spoil the look of a kitchen is uncluttered," says a spokesperson for Premier Housewares. "Getting kitchen storage that matches your design themes is essential, everything should have a place. Food that comes in flashy packaging should be in cupboard, or moved into containers, so everything in the kitchen looks like it is designed to be there."

The Grub Tub range includes polypropylene lunch boxes in a number of bright colours that have several useful features. The box has two separate containers and it comes with plastic cutlery and grips to hold them. There's a scalable cup, and a cool bag big enough to hold it all. There's an elastic strap to keep the box sealed and an elastic ring inside the bag to hold the cup in place. Grub Tub also includes various shapes and sizes of air-tight, transparent, polystyrene and silicone food storage containers. It's a range for anything you want to keep on the go.

### Pyrex

Hall 3.0 Stand D41

to reveal its new brand range with an ever-growing collection of 100th anniversary products. Pyrex (DND) Alexa is a new Pyrex line that has a glass base that has so much more to offer so Pyrex glass was the new Pyrex. The new Pyrex line is a highlight of the new Pyrex collection. Pyrex will also be launching a new range of glassware, while the new Pyrex line has been added to the Pyrex collection. Pyrex will also be launching a new range of glassware, while the new Pyrex line has been added to the Pyrex collection.



For 2017, Finum is expanding its... introduction of two functional coffee brewers. Bloom and Flow is a new pour-over coffee and tea brewer consisting of a stylish glass carafe and a unique funnel insert which provides an optimised bloom and flow of coffee through the paper cone. Made in Germany, it comes with a funnel adapter which converts Bloom and Flow into a pour-over tea brewer.

Coffee Sprinter: a single-serve coffee brewer (pictured) is the solution to ultimate freshness – place the Coffee Sprinter on a mug or cup and add ground coffee into the filter, the water distributor is inserted to press the ground coffee flat to the stainless steel mesh at the bottom. Hot water passes the ground coffee and fills the mug below.

### BergHoff

Hall 3.0 Stand D80

you spend BergHoff will become a new way of thinking about the kitchen. BergHoff has recently launched a new range of kitchen products which include the new BergHoff range of kitchen products. BergHoff has recently launched a new range of kitchen products which include the new BergHoff range of kitchen products.

### KitchenAid

Hall 3.1 Stand E50

KitchenAid has come by the unmatched performance. KitchenAid has come by the unmatched performance. KitchenAid has come by the unmatched performance. KitchenAid has come by the unmatched performance.

### Kelqa

Hall 1.2 Stand E30, E70

introducing a new range of kitchen products. Kelqa has recently launched a new range of kitchen products. Kelqa has recently launched a new range of kitchen products.



## Office & Sample Room









### Le caratteristiche del vetro soffiato al mese

1. Il suo vantaggio tra cui scultura di abbondanza, tecniche, effetti di superficie, colore ecc.
2. La qualità è un controllo difficile e la tolleranza di dimensioni, peso e forma è maggiore.
3. Il prezzo è alto e il prodotto è limitato per vetro tecnico speciale.

### Metodo di applicazione

1. Usandolo sotto la guida dell'adulto
2. Lavarlo con acqua pulita o tiepida prima dell'uso
3. Non toccare il bordo della tazza di vetro, provare a prendere il fondo o la maniglia di esso

### Precauzioni

1. Birra, vino rosso, vino bianco, bevanda o acqua calda non dovrebbero essere troppo pieni
2. Per evitare di ferire la mano dei tuoi bambini, per favore mettili dove non possono raggiungere
3. Evitare cadute, urti e forti impatti
4. Non disponibile per il forno a microonde
5. Per evitare che si rompa, non metterlo direttamente sul fuoco

Per più [porta candeles](#) o qualsiasi bicchiere,

Si prega di visitare il nostro sito: <http://www.okcandle.com/>

O qui può aiutarti a sapere meglio di noi: [FAQ](#)

[Attendiamo la tua richiesta e collaborazione.](#)

[Homepage indietro](#)