


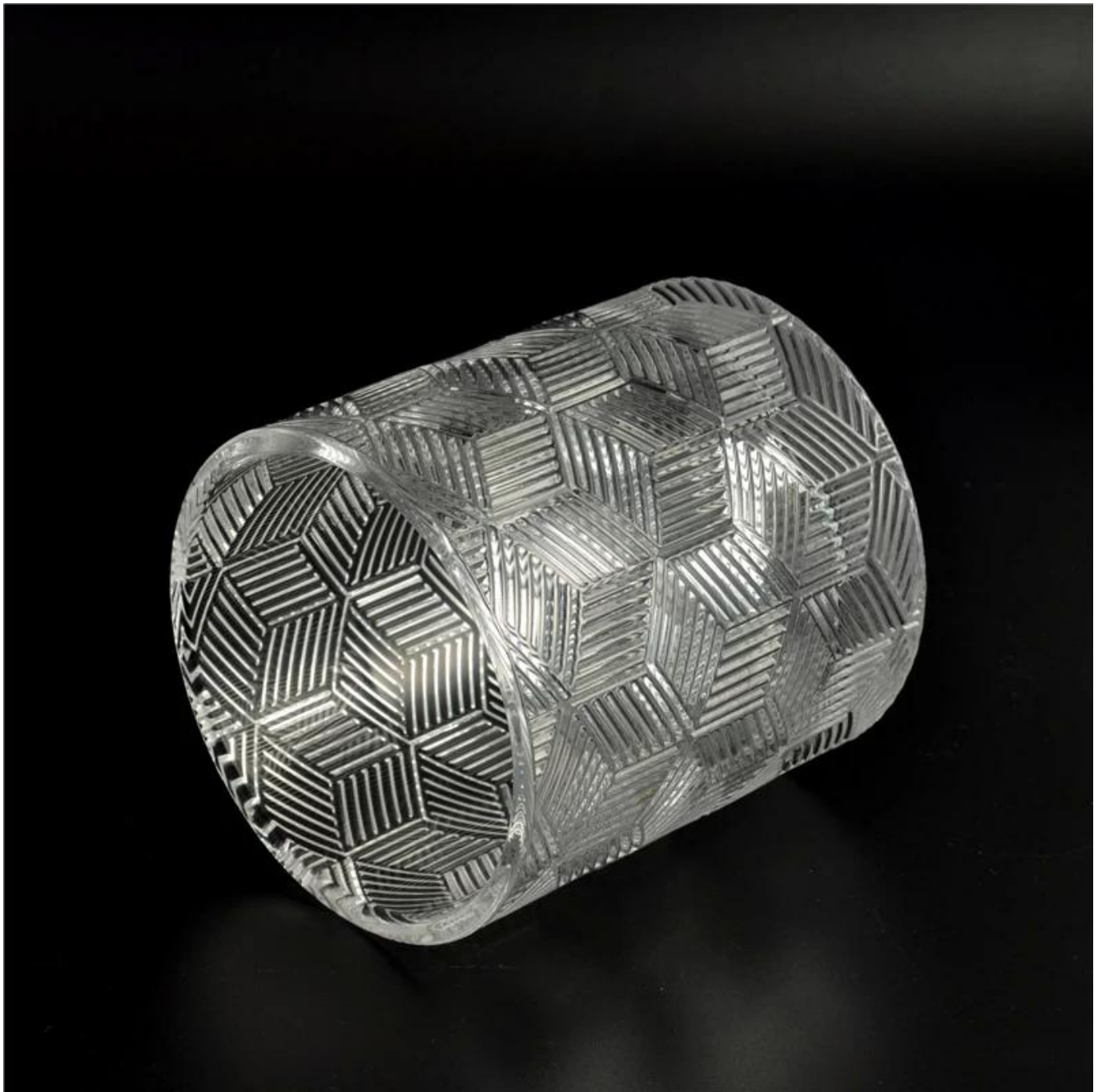
# Customized glass candle jar decorative glass candle jar with lid

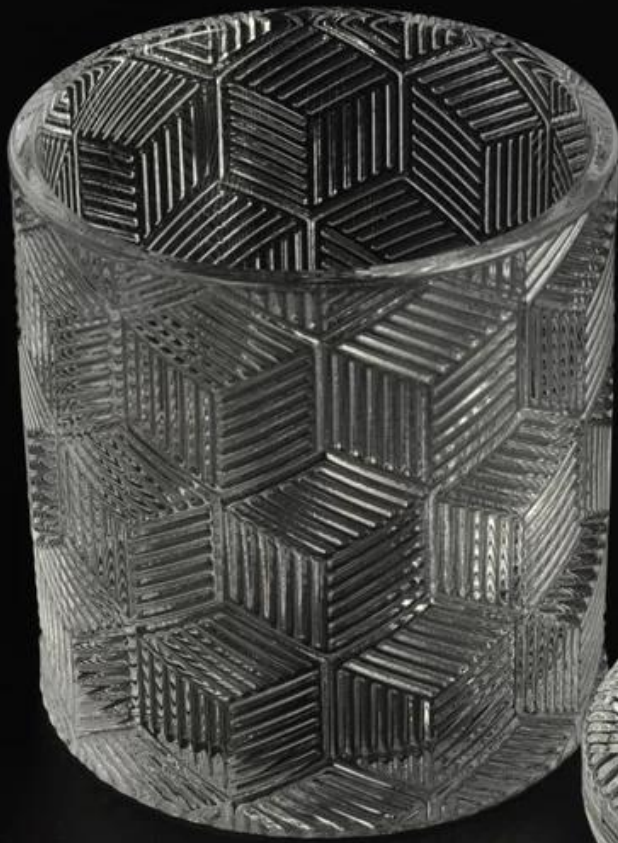
## Product Details

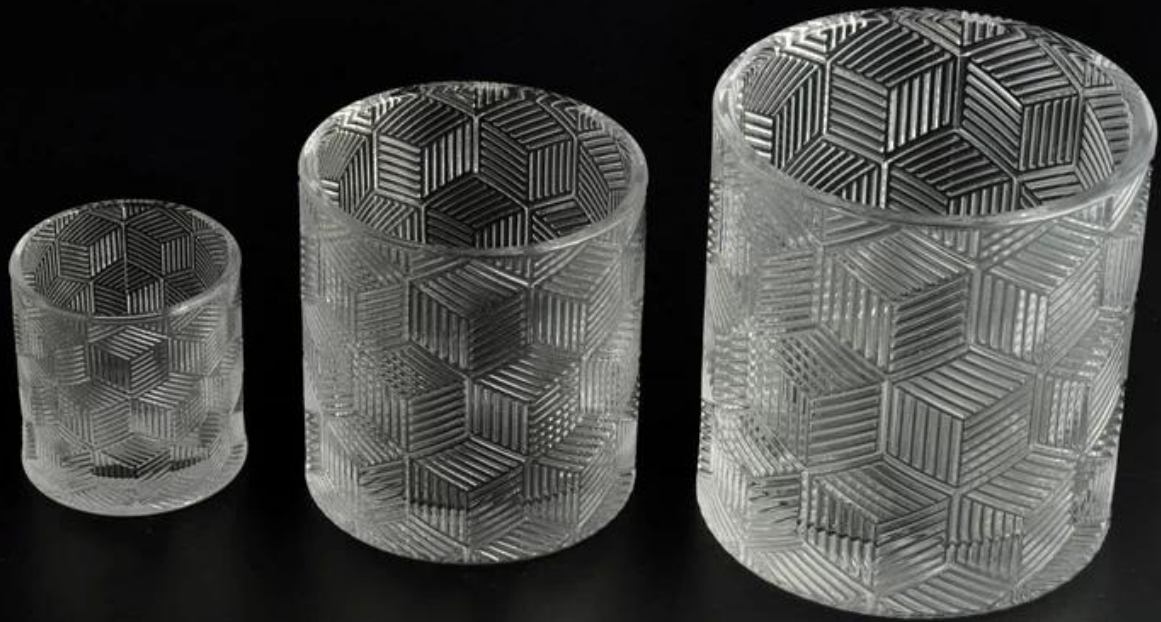
|  |                  |   |
|--|------------------|---|
|  | Item No          | SGHY16011907  |
|  | Size             | Top dia 80mm<br>Bottom dia 80mm<br>Height 84mm<br>Weight 313g<br>Capacity 275ml<br>Lid:<br>Top dia 79mm<br>Bottom dia 67mm<br>Height 20mm<br>Weight 130g  |
|  | Surface finish   | <b>Customized glass candle jar decorative glass candle jar with lid</b>   |
|  | Material         | High white glass  |
|  | Surface finish   | color spray, electroplating, etc are available  |
|  | Sample           | 7days   |
|  | Terms of payment | 30% deposit by T/T in advance and the balance after showing copy of L/C   |
|  | Certification    | ASTM Test (for candle holder)   |
|  | For your choice  | 1, Any logo printing on glass body<br>2, Any color painted, frosted, electroplating, logo laser for the finish<br>3, Special packing like shrink wrap, color gift box, white box etc<br>4, Any shape, size meet your need |

More Product Pictures











Similar Products Link



[Cylinder tealight candle holder](#)

[Round small tealight holder](#)

[Flower shape cylinder jade amber color decorative glass candle jar candle holder](#)

## Office & Sample Room



## Factory Show







### The features of month blown glass

1. Its advantage including abundance sculpt, technics, surface effects, color etc.
2. The quality is difficult control and the tolerance of the size, weight and shape are bigger.
3. The price is high and the product is limited for the special technic glass.

### Method of application

1. Using it under guide of the adult
2. Washing it with clean or boiling water before usage
3. No touching the rim of glass cup,try to take the bottom or the handle of it

### Cautions

1. Beer, red wine, white wine, beverage or hot water not be too full
2. To avoid to hurt your children's hand, please put it in the place where they can't reach
3. Avoid dropping ,Collision and strong impact
4. Not available for microwave oven
5. To prevent it from cracking, do not put it over open fire directly

For more [candle holder](#) or any glassware,  
please visit our website: <http://www.okcandle.com/>

Or here may help you know more about us: [FAQ](#)

[We are looking forward your inquiry and cooperation.](#)

[Homepage back](#)