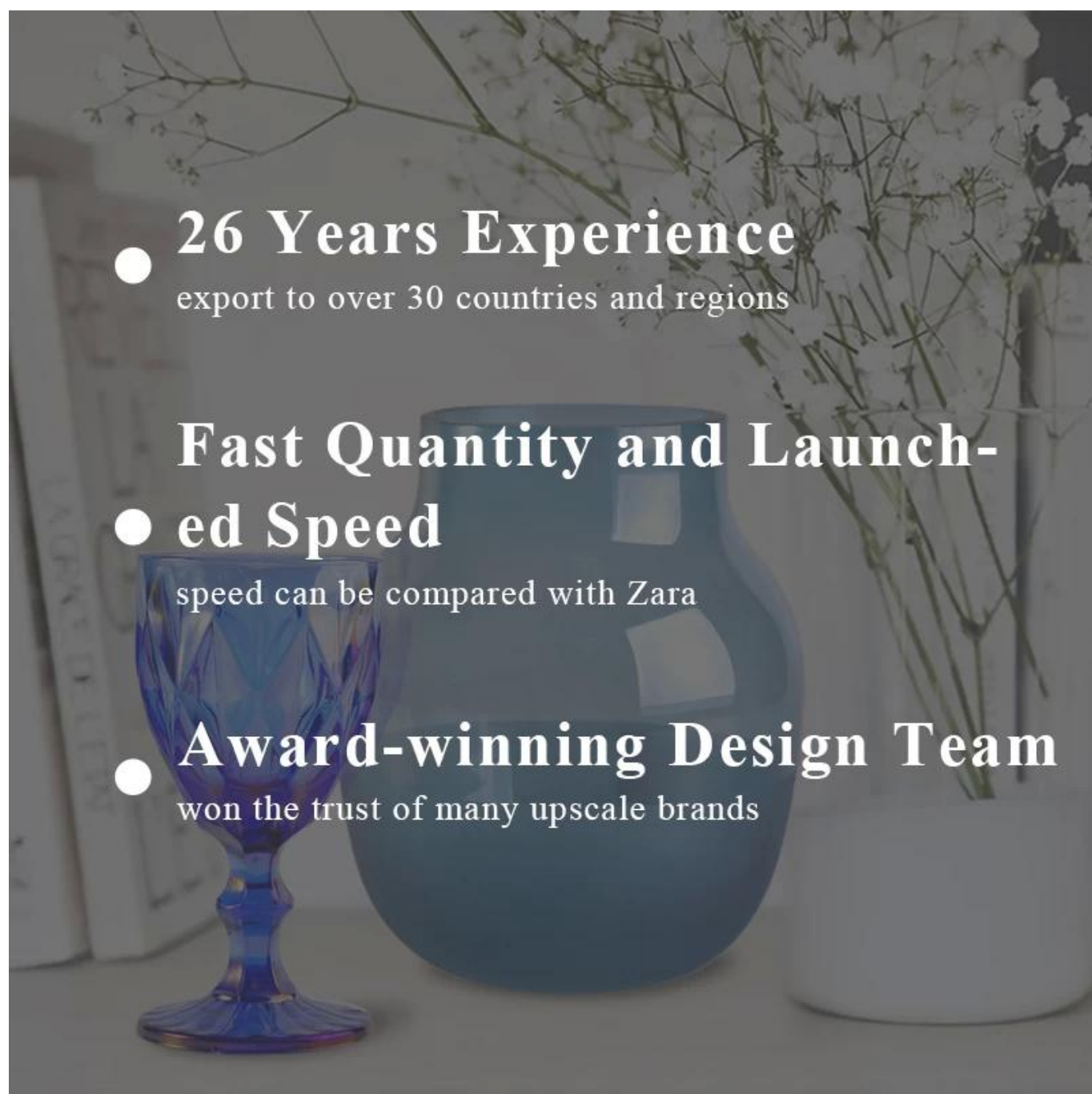


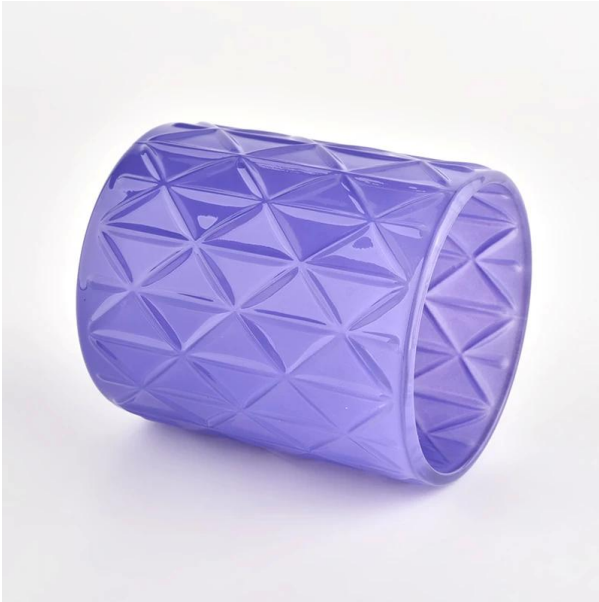
Porta di candele di vetro rotondo da 400 ml

Il vetro Sunny non solo produce ordini OEM / ODM, ma aiuta anche molti marchi a iniziare dal concetto di prodotto.



- **26 Years Experience**
export to over 30 countries and regions
- **Fast Quantity and Launch-
ed Speed**
speed can be compared with Zara
- **Award-winning Design Team**
won the trust of many upscale brands

Perché scegliere Sunshine?



Grande vantaggio

- . Concentrati sul design di lusso
- . Circa l'80% dei fornitori di marchi di profumo americani
- . AQL Plus 6 rigorosi standard di test QC rigorosi
- . Mantenere prodotti di qualità e campionamento e sfuso

La progettazione di dimensioni flessibili può essere ampliata rapidamente il tuo mercato

Dia superiore. : 84mm
Diametro inferiore: 84mm
Altezza: 100mm.
Capacità: 400 ml.
Peso: 387G

Traduciamo le tue idee in prodotti di spezie creative, ti vendiamo nel mercato locale.





caratteristica del prodotto

1. Bottiglia di incenso in vetro decorativo per la casa di alta qualità.
2. Applicabile a hotel, matrimonio, ecc.
3. Incontra la funzione dei prodotti di prova ASTM.

Lascia che tu scelga

1. Sono disponibili vari disegni e dimensioni.
 2. Eventuali strumenti di elaborazione del modello laser dipinto, taglio, placcatura.
 3. Ridurre il film, la scatola regalo a colori, la scatola regalo bianca e altri imballaggi speciali.
- Abbiamo un comitato di controllo di qualità.
5. Abbiamo seminari e magazzini professionali per garantire i tempi di consegna.



ACCESSORIES SHOWS



Wooden Lid



Cork Lid



Zinc Alloy Cover



Wick Trimmer Cutter

- . Cena decorativa nel bar o nel bar
- . Adatto a famiglie, hotel o giardini
- . Regalo amante speciale
- . Qualsiasi possibilità di decorazione



Storia della storia.

Company Profile



Sunny Glassware was established by Frank and Alice for more than 25 years, which provide a leading excellent combination between prices, quality & responsiveness in glassware industry.

Sunny keep engaged in glassware designing and manufacturing, there are more than 10 product lines available from hand blown craft to machine pressed, machine blown and IS machine made etc., and various kinds of deep processing technologies can be customized such as color sprayed, laser printing, decal print, electroplate, frosted, screen printing, sandblasted and ion plating etc. **ISO 9001:2008/2015, Enterprise Intellectual Property and Green & Social Compliance Statement** certificates were issued by the third-party certification companies.

There are about 5,000 items which cover all daily-used glassware and ceramic ware, e.g. candle holders, borosilicate glass, bottles, tumblers, jars, stemware, tableware & drinkware, bathroom accessories etc. The products can meet **FDA, LFGB, CA 65, ASTM, dishwasher test**.

With a strictly control system on product quality and customer service, our exporting market have expanded rapidly to North & South America, Europe, Oceania and Asia.

Our business scopes are mainly involved in home decor, gift crafts and tableware. There are **approximately 80% candle holders in USA luxury branded companies were imported from Sunny Glassware**.

Cosa ci siamo?

Sunny Glatwares ha approvato la certificazione del sistema di gestione della qualità ISO 90012008/2015 e ha implementato gli standard di proprietà intellettuale dell'azienda per proteggere gli interessi dei propri clienti.



ISO 9001: 2015



Proprietà intellettuale aziendale

Numero di brevetto:
201630655323.4

DEEP PROCESSING



Electroplating



Laser Engraving



Spraying



Decal Printing



Mercury Finish



Iridescent



Foiling



Screen Printing



Frosted



Sandblasted



Esempio di display in camera

Benvenuti nell'ufficio di Shenzhen per trovare il tuo preferito, ti sorprenderà, perché è difficile trovare un altro fornitore in Cina.



pacchettoEtrasporto

PACKAGING & SHIPPING



ADVANTAGE

1.OEM/ODM

2.High Quqlity and Competitive Price

3.After-sale service

FAQ

Q1: Do you accept small order?

Yes, any quantity would be acceptable if we have stocks.

Q2: Do you have any other colors/sizes for this kind of jar?

Any colors can be customized according to pantone number or your sample, the we have some hot sale regular sizes for you to choose, if you want to make new sizes we can also open new molds.

Q3: What kind of lids you can offer?

We can provide lids in different materials like glass, ceramic, metal, wood, concrete and plastic ect.

Q4: Do you have certification for your products?

Yes, for the glassware, have ASTM. CA65 test , FDA etc.

Q5: Do you accept Third party inspection?

Yes,we accept it.It's the normal way for many clients.

Q6: How to ensure the production quality is what I need?

We will do the production and inspect the goods by sample we both approved. If you have more requirement for the product quality,we should discuss the quality standard before we place the order.

Q7: How could I get a sample?

We offer free samples for those we keep in stock, for custom samples we need 7~10 to get samples ready. Sample fee could be pay by Paypal, Alibaba, or bank.

Q8: What's your MOQ of ceramic jars?

The moq of a single order is 3000 pcs, 1000 pcs each color is acceptable

Q9: Why your sample cost is so expensive?

Sample cost is mainly for labor cost, it is not equal to unit price.

Q10: Could you arrange shipment for us together?

Yes, we can. We have a professional logistics department which help many of our customers handle shippments, if you need we arrange shipping, please tell us your company or warehouse address and we can quote DDU price to you check together

