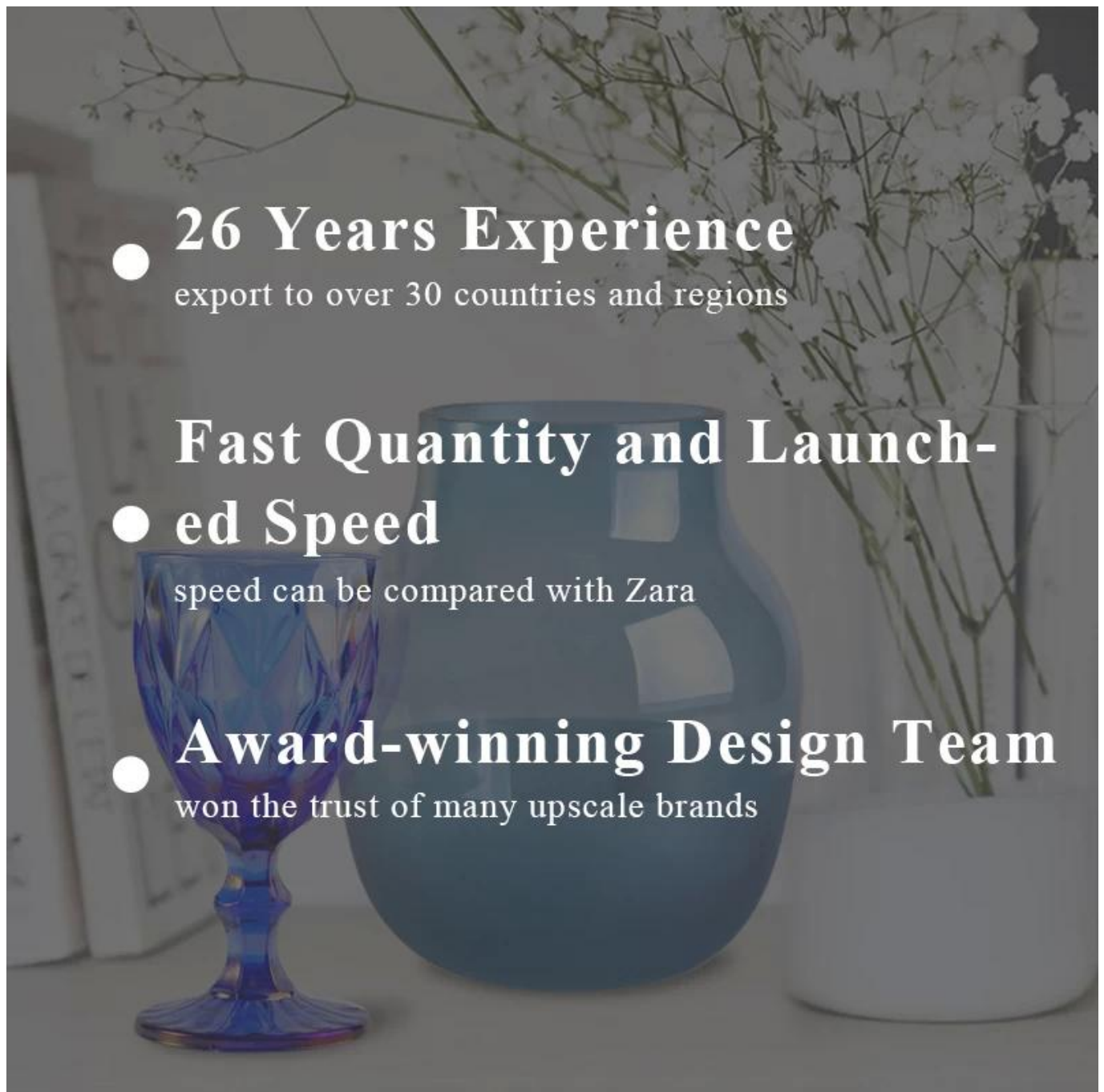


pot de bougie en verre en gros avec bande

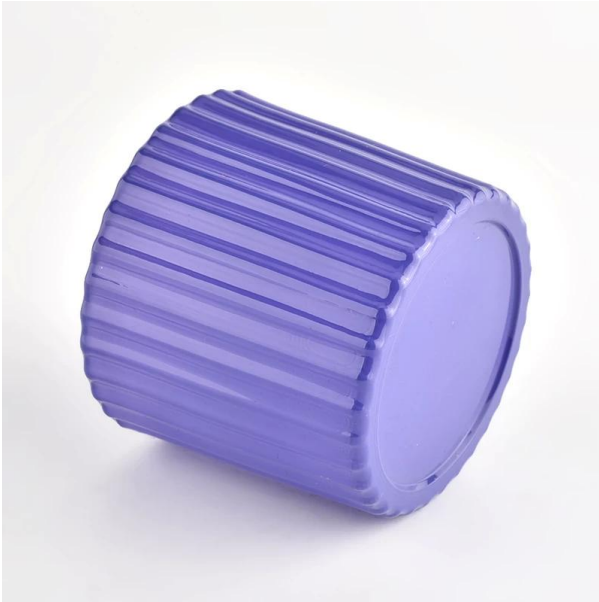
La verrerie ensoleillée produit non seulement des commandes OEM / ODM, mais aide également de nombreuses marques à partir du concept de produit.



- **26 Years Experience**  
export to over 30 countries and regions
- **Fast Quantity and Launch-  
ed Speed**  
speed can be compared with Zara
- **Award-winning Design Team**  
won the trust of many upscale brands

**Pourquoi choisir Sunshine?**

---



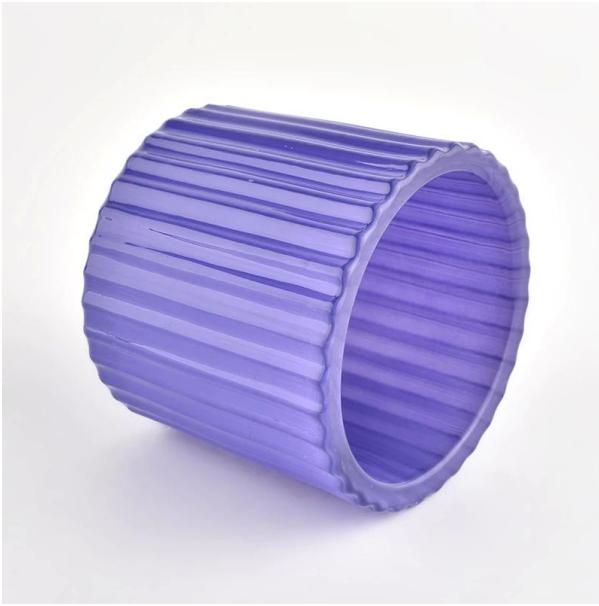
### Avantage majeur

- . Concentrez-vous sur le design de luxe
- . Environ 80% des fournisseurs de marque de parfum américain
- . AQL plus 6 Normes de test QC rigoureuses strictes
- . Maintenir des produits de qualité et d'échantillonnage et de vrac

Top dia: 90 mm  
Dia inférieur: 83 mm  
Hauteur: 78 mm  
Capacité: 291 ml.  
Poids: 438g

Nous traduisons vos idées en produits Creative Spices, nous vous vendons sur le marché local.





### **caractéristique du produit**

1. Bouteille d'encens en verre décorative de haute qualité.
2. Applicable à l'hôtel, au mariage, etc.
3. Répondez à la fonction des produits de test ASTM.

### **Laissez-vous choisir**

1. Divers dessins et tailles sont disponibles.
  2. Tout outil de traitement du modèle peint, coupant, placage et laser.
  3. Film rétractable, boîte cadeau en couleur, boîte cadeau blanche et autres emballages spéciaux.
- Nous avons un comité de contrôle de la qualité.
5. Nous avons des séminaires et des entrepôts professionnels pour assurer le délai de livraison.



- . Dîner décoratif dans le bar ou le bar
- . Convient aux familles, aux hôtels ou aux jardins
- . Cadeau d'amant spécial
- . Toute chance de décoration



## Histoire d'histoire.

### Company Profile



**Sunny Glassware** was established by Frank and Alice for more than 25 years, which provide a leading excellent combination between prices, quality & responsiveness in glassware industry.

Sunny keep engaged in glassware designing and manufacturing, there are more than 10 product lines available from hand blown craft to machine pressed, machine blown and IS machine made etc., and various kinds of deep processing technologies can be customized such as color sprayed, laser printing, decal print, electroplate, frosted, screen printing, sandblasted and ion plating etc. **ISO 9001:2008/2015, Enterprise Intellectual Property** and **Green & Social Compliance Statement** certificates were issued by the third-party certification companies.

There are about 5,000 items which cover all daily-used glassware and ceramic ware, e.g. candle holders, borosilicate glass, bottles, tumblers, jars, stemware, tableware & drinkware, bathroom accessories etc. The products can meet **FDA, LFGB, CA 65, ASTM, dishwasher test**.

With a strictly control system on product quality and customer service, our exporting market have expanded rapidly to North & South America, Europe, Oceania and Asia.

Our business scopes are mainly involved in home decor, gift crafts and tableware. There are **approximately 80% candle holders in USA luxury branded companies** were imported from Sunny Glassware.

## Que sommes-nous là?

Les Glatwares ensoleillés ont approuvé la certification du système de gestion de la qualité ISO 90012008/2015 et ont mis en œuvre les normes de propriété intellectuelle de l'entreprise pour protéger les intérêts de ses clients.



ISO 9001: 2015



Propriété intellectuelle de l'entreprise

Numéro de brevet:  
201630655323.4

# DEEP PROCESSING



Electroplating



Laser Engraving



Spraying



Decal Printing



Mercury Finish



Iridescent



Foiling



Screen Printing



Frosted



Sandblasted



## Échantillon d'écran de pièce

Bienvenue au bureau de Shenzhen pour trouver votre favori, cela vous surprendra, car il est difficile de trouver un autre fournisseur en Chine.





**paquet&transport**

---

# PACKAGING & SHIPPING



## ADVANTAGE

---

1.OEM/ODM

2.High Quqlity and Competitive Price

3.After-sale service

# FAQ

Q1: Do you accept small order?

Yes, any quantity would be acceptable if we have stocks.

Q2: Do you have any other colors/sizes for this kind of jar?

Any colors can be customized according to pantone number or your sample, the we have some hot sale regular sizes for you to choose, if you want to make new sizes we can also open new molds.

Q3: What kind of lids you can offer?

We can provide lids in different materials like glass, ceramic, metal, wood, concrete and plastic ect.

Q4: Do you have certification for your products?

Yes, for the glassware, have ASTM. CA65 test , FDA etc.

Q5: Do you accept Third party inspection?

Yes,we accept it.It's the normal way for many clients.

Q6: How to ensure the production quality is what I need?

We will do the production and inspect the goods by sample we both approved. If you have more requirement for the product quality,we should discuss the quality standard before we place the order.

Q7: How could I get a sample?

We offer free samples for those we keep in stock, for custom samples we need 7~10 to get samples ready. Sample fee could be pay by Paypal, Alibaba, or bank.

Q8: What's your MOQ of ceramic jars?

The moq of a single order is 3000 pcs, 1000 pcs each color is acceptable

Q9: Why your sample cost is so expensive?

Sample cost is mainly for labor cost, it is not equal to unit price.

Q10: Could you arrange shipment for us together?

Yes, we can. We have a professional logistics department which help many of our customers handle shippments, if you need we arrange shipping, please tell us your company or warehouse address and we can quote DDU price to you check together

