

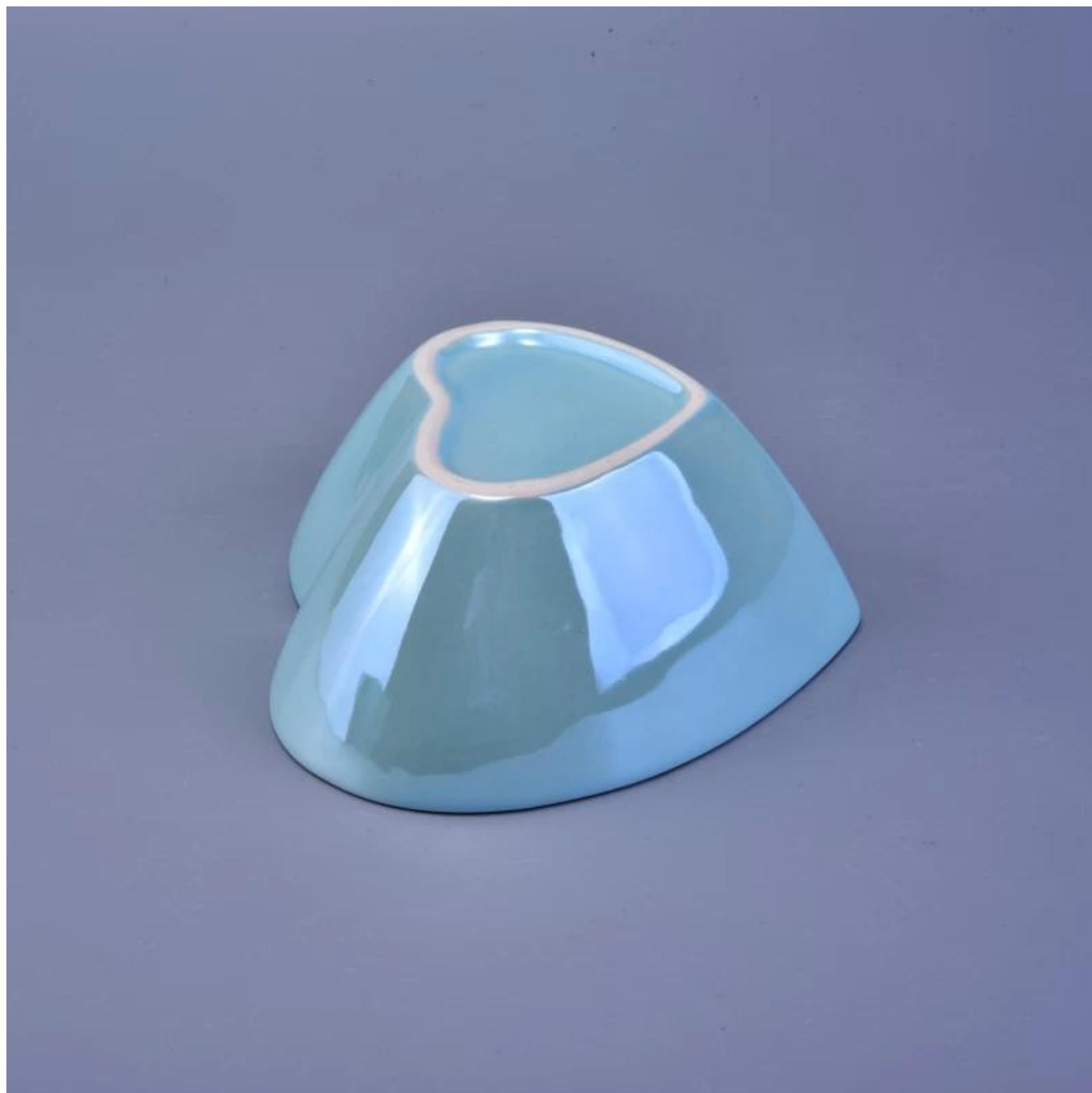
## 12.5oz candy color heart shape ceramic candle container

### Product Details

Product ID	SGJF16121302
Material	Ceramic
Crafts	Hand made ceramic candle container
Proofing time	1. Existing products, sample time 5 days 2. The need to re-mold, sample time 15 days
Package	General packaging, 48 / Carton
Capacity	500,000 to 1,000,000 / month
Delivery Time	35 days after sample and order confirmation
Payment Terms	T / T 30% down payment, pay the balance due to see a copy of the bill of lading
Transport	Maritime transport, air transport, international express delivery; guests designated freight forwarding
Product Features	1. Hand made <a href="#">candle container</a> 2. Can be used in hotels, home,bar,etc 3. Environmental material 4. FDA test, CA65 test
For you to choose	1. Satisfy your different design and size 2. Any color of paint, frosting, electroplating, laser engraving can be done 3. provide special packaging such as shrink film, color gift box, white gift box 4. We have a dedicated quality control team to control product quality 5. We have professional production bases and warehouses to ensure delivery

### More Product Pictures



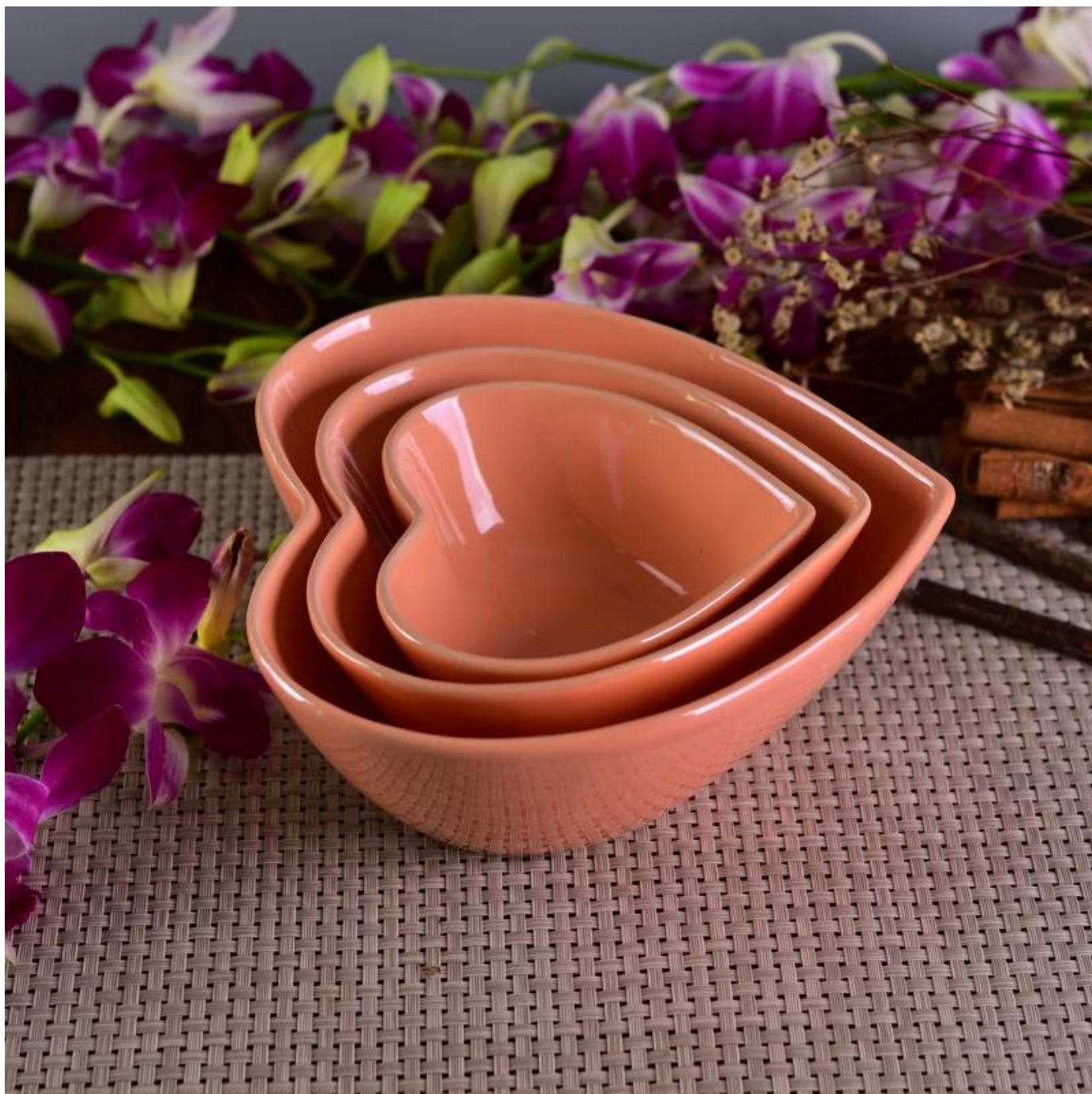












[Similar Products Link](#)





## Office & Sample Room



## Factory Show







#### Method of application

1. Using it under guide of the adult
2. Washing it with clean or boiling water before usage
3. No touching the rim of glass cup, try to take the bottom or the handle of it

#### Cautions

1. Beer, red wine, white wine, beverage or hot water not be too full
2. To avoid to hurt your children's hand, please put it in the place where they can't reach
3. Avoid dropping ,Collision and strong impact
4. Not available for microwave oven
5. To prevent it from cracking, do not put it over open fire directly

For more glass candle holder or any glassware,  
please visit our website: <http://www.okcandle.com/>

Or here may help you know more about us: [FAQ](#)

[We are looking forward your inquiry and cooperation.](#)

[\*\*Homepage back\*\*](#)