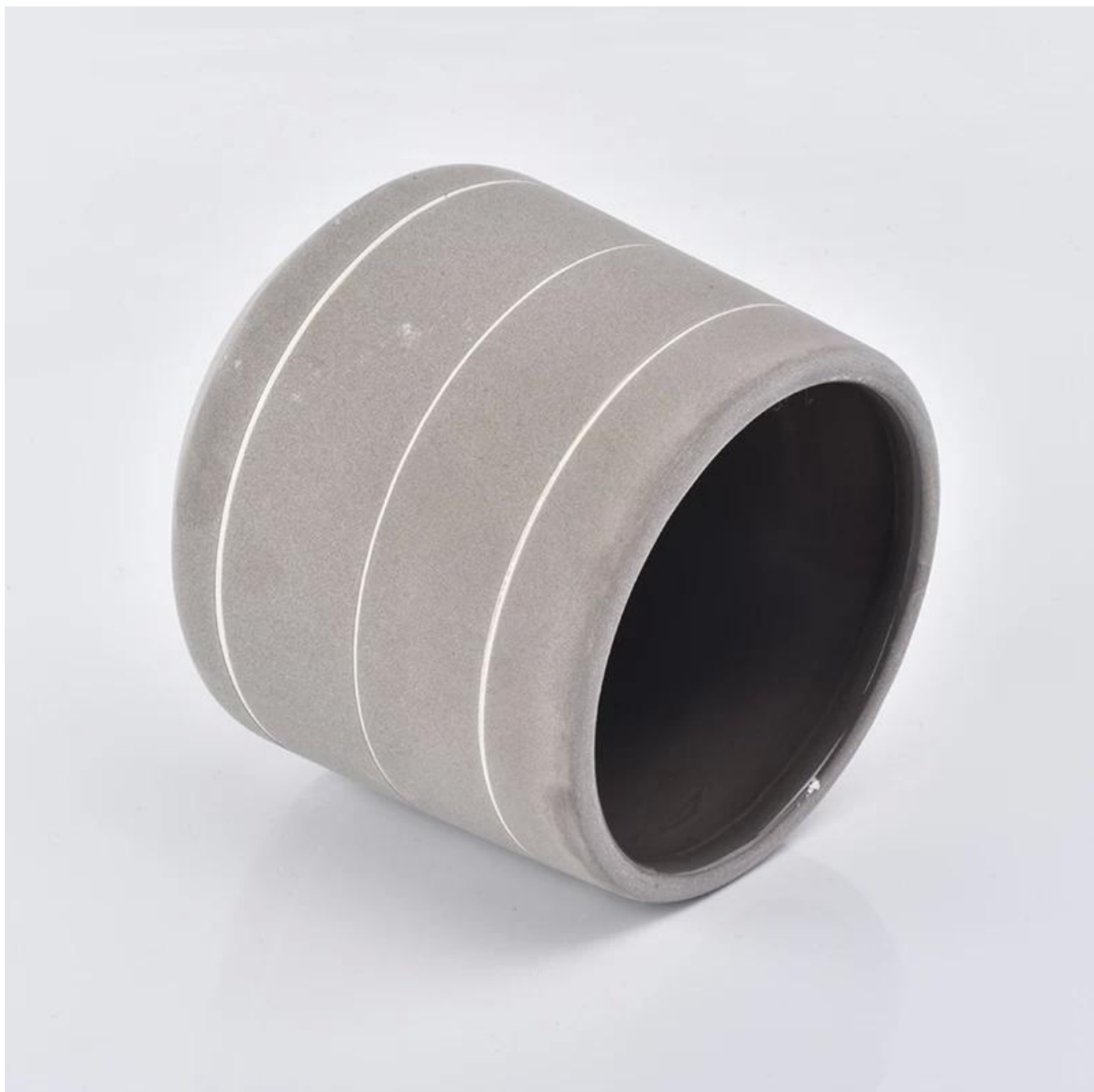


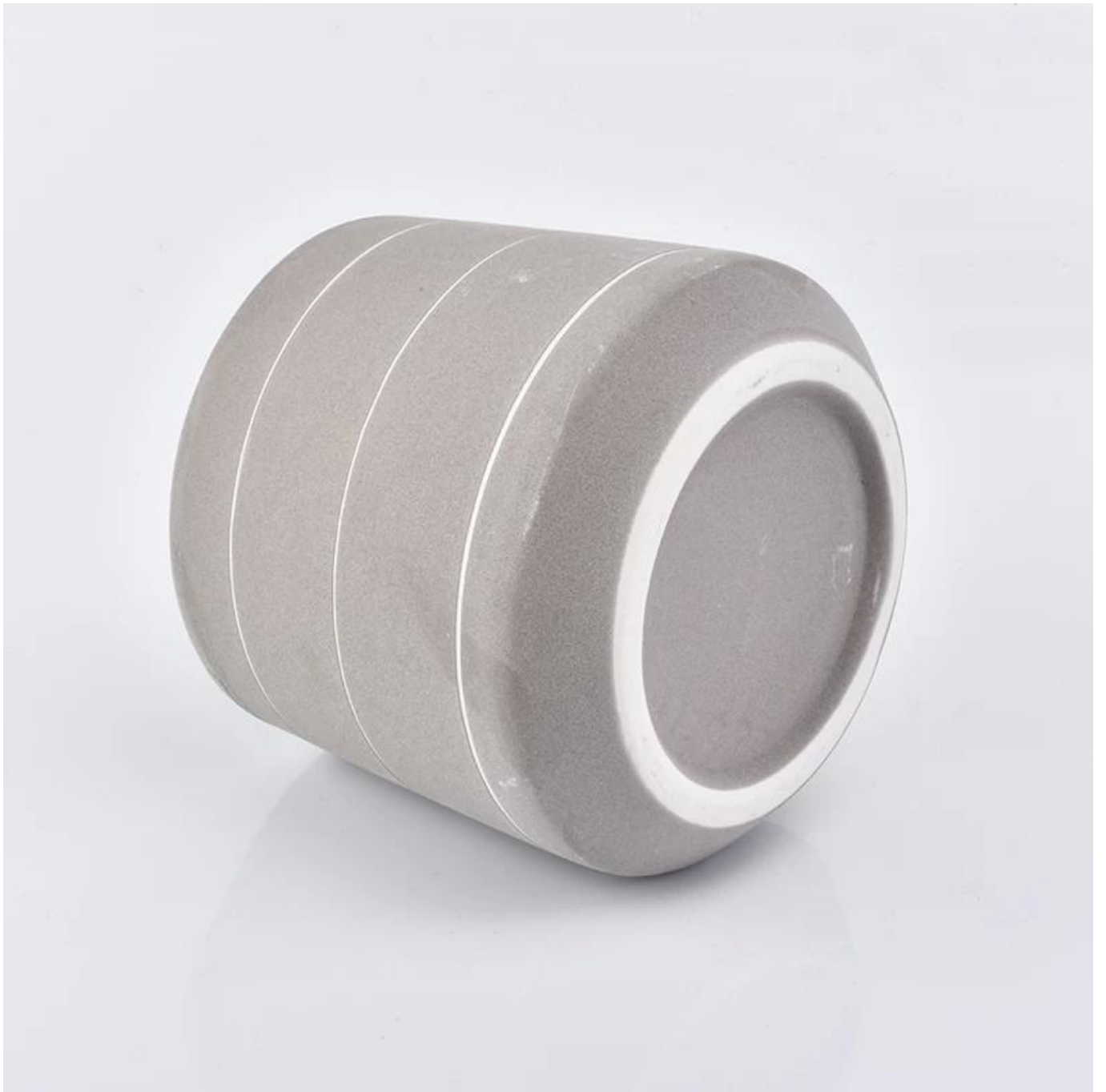
Product Details

اسم العنصر	وصل جديد حاملي الشموع السيراميك
رقم الشيء	SGGH19011602
اقتطعها	92mm أعلى ضياء: أسفل ديا: 103 ملم الارتفاع: 93 مم الوزن: 252 جرام السعة: 495 مل أحجام أخرى: 5 أوقية / 8 أوقية / 10 أوقية / 16 أوقية وتتوفر أيضا
سعة	وما إلى ذلك 10oz 14oz 16oz
وقت الحصول على العينات	يوم إذا كان شكل وحجم المنتجات موجودة 1.5 2.15 أيام إذا كنت بحاجة إلى شكل جديد وحجم المنتجات
صفحة	الأمن التعبئة العادية وهلم جرا. لتصدير الكرتون مع مقسم البيض 24pcs / 36pcs / 48pcs
موك	3000PCS
موعد التسليم	في غضون 35 يوما بعد تأكيد النظام
شروط الدفع	B / L مقدما ، والتوازن بعد عرض نسخة من T / T إيداع 30 ٪ بحلول
مواصفات المنتج	1. جودة عالية وأسعار تنافسية . الخ. FDA ، SGS ، LFGB .2. اختبار 3. صديقة للبيئة 4. إنه يهدف على نطاق واسع إلى حفلات الزفاف ، والحفلات ، والمنزل ، والحانات ، إلخ. 5. آلة صنع

More Product Pictures











storage product ranges.

"The easiest way to spoil the look of a kitchen is uncluttered," says a spokesperson for Premier Housewares. "Getting kitchen storage that matches your design themes is essential; everything should have a place. Food that comes in flashy packaging should be in cupboard, or moved into containers, so everything in the kitchen looks like it is designed to be there."

The Grub Tub range includes polypropylene lunch boxes in a number of bright colours that have several useful features. The box has two separate containers and it comes with plastic cutlery and grips to hold them. There's a storable cup, and a cool bag big enough to hold it all. There's an elastic strap to keep the box sealed and an elastic ring inside the bag to hold the cup in place. Grub Tub also includes various shapes and sizes of air-tight, transparent, polystyrene and silicone food storage containers. It's a range for anything you can think of.

lunch on-the-

Pyrex

Hall 3.0 Stand D41

to reveal its new brand

with an ever-growing

at expanding its 100th

is a brand to further

its Pyrex (D41) Area

of its own at Amherst

to the Pyrex brand - a

brand that has had so

popular glass was the

duct range in 1915 and

now to be a highlight

Pyrex will also

ing greater metal base

new large range, while

one been added to the

of these ranges will also

has their range. Expect

with the ever-popular

and healthy cooking

www.pyrex.com

uk.co.uk/pyrex.com



For 2017, Finum is expanding its collection of two functional coffee brewers. Bloom and Flow is a new pour-over coffee and tea brewer consisting of a stylish glass carafe and a unique funnel insert which provides an optimised bloom and flow of coffee through the paper cone. Made in Germany, it comes with a funnel adapter which converts Bloom and Flow into a pour-over tea brewer.

Coffee Sprinter, a single-up coffee brewer (pictured), is the solution to ultimate freshness - place the Coffee Sprinter on a mug or cup and add ground coffee into the filter, the water distributor is inserted to press the ground coffee flat to the stainless steel mesh at the bottom. Hot water passes the ground coffee and fills the mug below.

BergHoff

Hall 3.0 Stand D80

your brand BergHoff will feature a new range of kitchen products which has secured the best of design and functionality. The collection includes a range of kitchen products such as the award-winning BergHoff bring you a new range of kitchen products which will provide you with the best of design and functionality.

KitchenAid

Hall 3.1 Stand E30

KitchenAid long known for its unmatched performance, durability and iconic design of its countertop appliances, will introduce its most powerful home blender on the market. The new professional grade KitchenAid Power Plus Blender takes health conscious consumers to the next level.

For the first time since the introduction of the original The Hero Blender by Spinnaker in 1936, KitchenAid has introduced a new version of its iconic canister workhorse for a new generation of blenders with more power and performance as its top priority. Offering the same power and performance as its larger model, the Hero mixer is 20 per cent smaller and 25 per cent lighter than its 3.5 litre model. The mixer accommodates all optional hub-based attachments available for the larger model, so there are endless possibilities from grating to juicing and making pasta.

Original and new in four colours - Heritage, Matte Black, Matte Grey and Silver - KitchenAid has some exciting new colour introductions in 2017.

www.kitchenaid.co.uk

Kelqa

Hall 1.2 Stand E30, E70

introducing a new range of kitchen products for 2017. The Kelqa range includes a range of kitchen products for 2017. The Kelqa range includes a range of kitchen products for 2017. The Kelqa range includes a range of kitchen products for 2017.



Office & Sample Room







خصائص الزجاج المنفوخ في الشهر

1. مزاياه بما في ذلك النحت من الوفرة والتقنيات والآثار السطحية واللون الخ.
2. الجودة هي الاختيار الصعب والتسامح من حيث الحجم والوزن والشكل أكبر.
3. السعر مرتفع والمنتج محدود للزجاج الفني الخاص.

طريقة التطبيق

1. استخدامه تحت إشراف الكبار.
2. غسله بالماء النظيف أو الدافئ قبل الاستخدام.
3. لا تلمس حافة الكأس الزجاجية ، حاول أن تأخذ أسفل أو المقبض منه.

الاحتياطات

1. البيرة ، والنبيذ الأحمر ، والنبيذ الأبيض ، والشراب أو الماء الساخن لا ينبغي أن يكون ممتلئًا جدًا.
2. لتجنب إيداء يد أطفالك ، يرجى وضعهم في مكان لا يمكنهم الوصول إليه.
3. تجنب السقوط ، الاصطدام والآثار القوية.
4. غير متوفر لفرن الميكروويف.
5. لمنعه من الانهيار ، لا تضعه مباشرة على النار.

، للمزيد من **جامل شمعة** أو أي كوب

يرجى زيارة موقعنا على شبكة الانترنت <http://www.okcandle.com/>

أو هنا يمكن أن تساعدك على معرفة أفضل منا: **التعليمات**

.نحن في انتظار طلبك والتعاون.

[الصفحة الرئيسية مرة أخرى](#)