

جرة السيراميك مع نمط زهرة 24oz

Product Details

اسم العنصر	جرة السيراميك مع نمط زهرة 24oz
رقم الشيء	SGJW190129028
اقطعها	أعلى ضياء: 105 مم أسفل ديا: 115 ملم الطول: 102MM الوزن: 490 جرام السعة: 680 مل أحجام أخرى: 5 أوقية / 8 أوقية / 10 أوقية / 16 أوقية وتتوفر أيضا
سعة	وما إلى ذلك 10oz 14oz 16oz
وقت الحصول على العينات	يوم إذا كان شكل وحجم المنتجات موجودة 1.5 2.15 أيام إذا كنت بحاجة إلى شكل جديد وحجم المنتجات
صفقة	الأمن التعبئة العادية وهلم جرا. لتصدير الكرتون مع مقسم البيض 24pcs / 36pcs / 48pcs
موك	3000PCS
موعد التسليم	في غضون 35 يوما بعد تأكيد النظام
شروط الدفع	B / L مقدما ، والتوازن بعد عرض نسخة من T / T إيداع 30 ٪ بحلول
مواصفات المنتج	1. جودة عالية وأسعار تنافسية . الخ. FDA ، SGS ، LFGB .2. اختبار 3. صديقة للبيئة 4. إنه يهدف على نطاق واسع إلى حفلات الزفاف ، والحفلات ، والمنزل ، والحانات ، إلخ. 5. آلة صنع

More Product Pictures











KitchenAid

Hall 3.1 Stand E50

KitchenAid, long known for the unmatched durability and iconic design of its countertop mixers, has introduced its most powerful home blend yet with the new professional grade Artisan Power Plus. Offering the same power and performance as the professional models, the Artisan Power Plus is 20 per cent smaller than the professional models. The mixer accommodates a wide range of attachments available for the large models. Originally launched in four colours - Mini Grey and Hot Sauce - KitchenAid is introducing new colour introductions in 2017.

www.kitchenaid.co.uk

Rig-Tig

Hall 4.0 Stand C10

For Spring 2017, design-led brand Rig-Tig is introducing a new range of kitchenware within the areas of Kitchenware

BergHoff

Hall 3.0 Stand D80

Belgian brand BergHoff will showcase its award-winning lines at the show, including its for range, which has secured two Red Dot Design Awards - for the knives and cast iron collection. In fact, five of its latest collections have secured Red Dot Design awards, including its latest line, Leo. With Leo, BergHoff brings playful colours, pure shapes and soft touches to the kitchen.

Wooden handles versus synthetic ones, soft-touch materials opposed to stainless steel, cork

handles and soft-touch materials opposed to stainless steel, cork

handles and soft-touch materials opposed to stainless steel, cork

handles and soft-touch materials opposed to stainless steel, cork

handles and soft-touch materials opposed to stainless steel, cork

handles and soft-touch materials opposed to stainless steel, cork

handles and soft-touch materials opposed to stainless steel, cork

handles and soft-touch materials opposed to stainless steel, cork

handles and soft-touch materials opposed to stainless steel, cork

handles and soft-touch materials opposed to stainless steel, cork

handles and soft-touch materials opposed to stainless steel, cork

handles and soft-touch materials opposed to stainless steel, cork

handles and soft-touch materials opposed to stainless steel, cork

handles and soft-touch materials opposed to stainless steel, cork

handles and soft-touch materials opposed to stainless steel, cork

handles and soft-touch materials opposed to stainless steel, cork

handles and soft-touch materials opposed to stainless steel, cork

handles and soft-touch materials opposed to stainless steel, cork

handles and soft-touch materials opposed to stainless steel, cork

handles and soft-touch materials opposed to stainless steel, cork

handles and soft-touch materials opposed to stainless steel, cork

handles and soft-touch materials opposed to stainless steel, cork

handles and soft-touch materials opposed to stainless steel, cork

handles and soft-touch materials opposed to stainless steel, cork

Kela

Hall 1.2 Stand E 30 + E 70

Founded in 1903 and based in Germany, this family-run company offers an extensive range of quality products for the home, kitchen and bathroom. At Ambiente, Kela will present first-class equipment and

Pyrex

Hall 3.0 Stand D41

Pyrex brand Pyrex is set to reveal its new brand identity in 2017, along with an exciting new range of products. After celebrating its 100th birthday in 2013, Pyrex has re-branded its name and is introducing a new range of products. Pyrex is very excited to share at Ambiente a new look and feel to the Pyrex brand - a new approach to a traditional brand that has no end opportunity. Pyrex is excited to share the brand and Pyrex's first product range in 2017 and this material will continue to be a highlight of new glass ranges. Pyrex will also introduce to the existing popular meal table collection with the new Maye range, while Pyrex and solutions have been added to the range. The successful launch of some ranges will also be a highlight. Pyrex is excited to share at Ambiente a new look and feel to the Pyrex brand - a new approach to a traditional brand that has no end opportunity. Pyrex is excited to share the brand and Pyrex's first product range in 2017 and this material will continue to be a highlight of new glass ranges. Pyrex will also introduce to the existing popular meal table collection with the new Maye range, while Pyrex and solutions have been added to the range. The successful launch of some ranges will also be a highlight.

www.pyrex.com

www.pyrex.com

www.pyrex.com

www.pyrex.com

www.pyrex.com

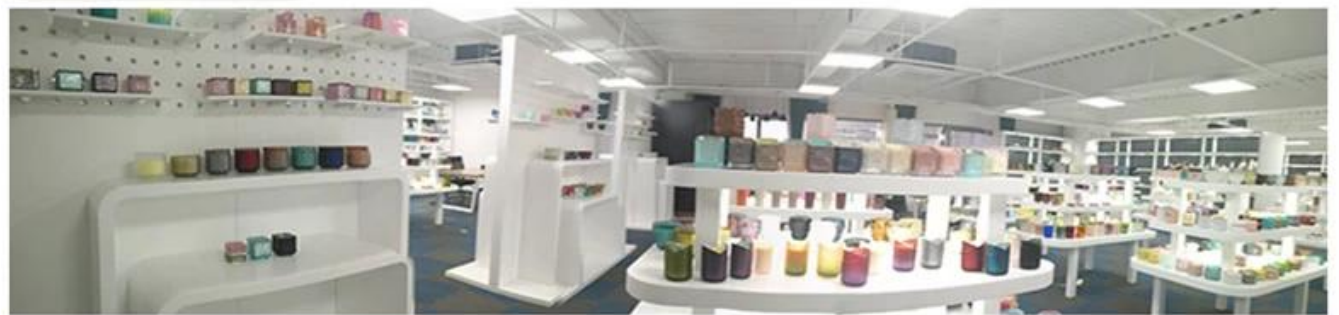
www.pyrex.com

www.pyrex.com

www.pyrex.com

www.pyrex.com







خصائص الزجاج المنفوخ في الشهر

1. مزايه بما في ذلك النحت من الوفرة والتقنيات والآثار السطحية واللون الخ.
2. الجودة هي الاختيار الصعب والتسامح من حيث الحجم والوزن والشكل أكبر.
3. السعر مرتفع والمنتج محدود للزجاج الفني الخاص.

طريقة التطبيق

1. استخدامه تحت إشراف الكبار.
2. غسله بالماء النظيف أو الدافئ قبل الاستخدام.
3. لا تلمس حافة الكأس الزجاجية ، حاول أن تأخذ أسفل أو المقبض منه.

الاحتياطات

1. لا ينبغي أن تكون البيرة أو النبيذ الأحمر أو النبيذ الأبيض أو الشراب أو الماء الساخن ممثلة.
2. لتجنب إيداء يد أطفالك ، يرجى وضعهم في مكان لا يمكنهم الوصول إليه.
3. تجنب السقوط ، الاصطدام والآثار القوية.
4. غير متوفر لفرن الميكروويف.
5. لمنعه من الانهيار ، لا تضعه مباشرة على النار.

، للمزيد من **حامل شمعة** أو أي كوب

يرجى زيارة موقعنا على شبكة الانترنت <http://www.okcandle.com/>

أو هنا يمكن أن تساعدك على معرفة أفضل منا: **التعليمات**

.نحن في انتظار طلبك والتعاون.

[الصفحة الرئيسية مرة أخرى](#)