

Product Details:

| | |
|------------------|---|
| Item No. | SGTP542C |
| Material | High white glass |
| Process | Machine-made |
| Samples time | 1. 5 days if at exit shaped and size of glass. 2. 15 days if need new shape or size of glass. |
| Packing | Normal packing, 24 or 36 pcs into export carton, carton with cardboard divider |
| Product Capacity | 500,000~1,000,000 pcs per month |
| Delivery time | Within 35 days after the sample and order confirmed |
| Payment terms | 30% deposit by T/T in advance and the balance against the copy of B/L |
| Shipment | By sea, by air, by Express and your shipping agent is acceptable |
| Product Features | 1. machine-made glass bowl 2. Suitable for family, hotel, restaurants, hotel, etc 3. Professional Q/C for quality control. 4. Competitive price and quality 5. meet FDA test and food grade |
| For your choices | 1. Any logo printing on the glass body. 2. Any color painted, frost, electro plate, pattern laser carver for the finish; 3. Special package like shrink wrap, color gift box, white gift box etc: 4. Open new mould for the glass, wood, plastic or metal as you like 5. Different size and shapes meet your needs. |

Product Show:



Package :



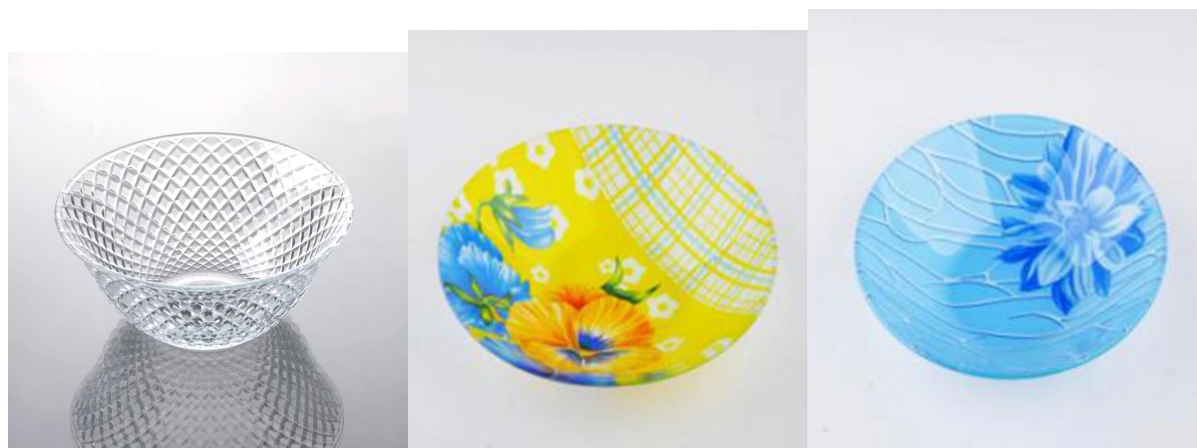
Company Show:



Factory show:



Related product:



For more machine made [glass bowl](http://www.okcandle.com/) or any glassware

please visit our website: <http://www.okcandle.com/>

Or contact us:

Michelle Lai,

Tel☎+86 755 25643425

Skype:sunnyglassware30

Email:sales30@sunnyglassware.com

