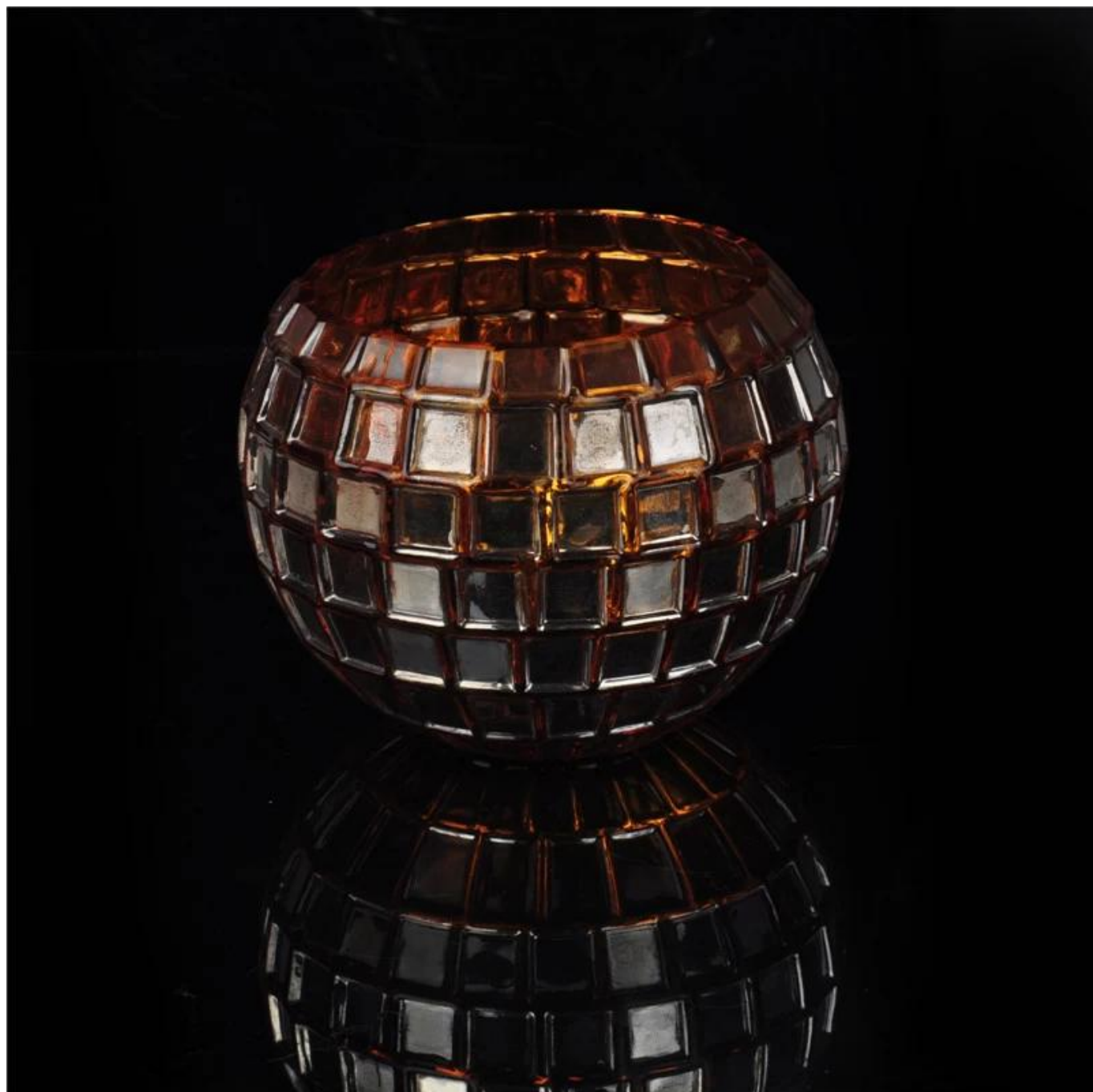


ball shape handmade glass candle holder

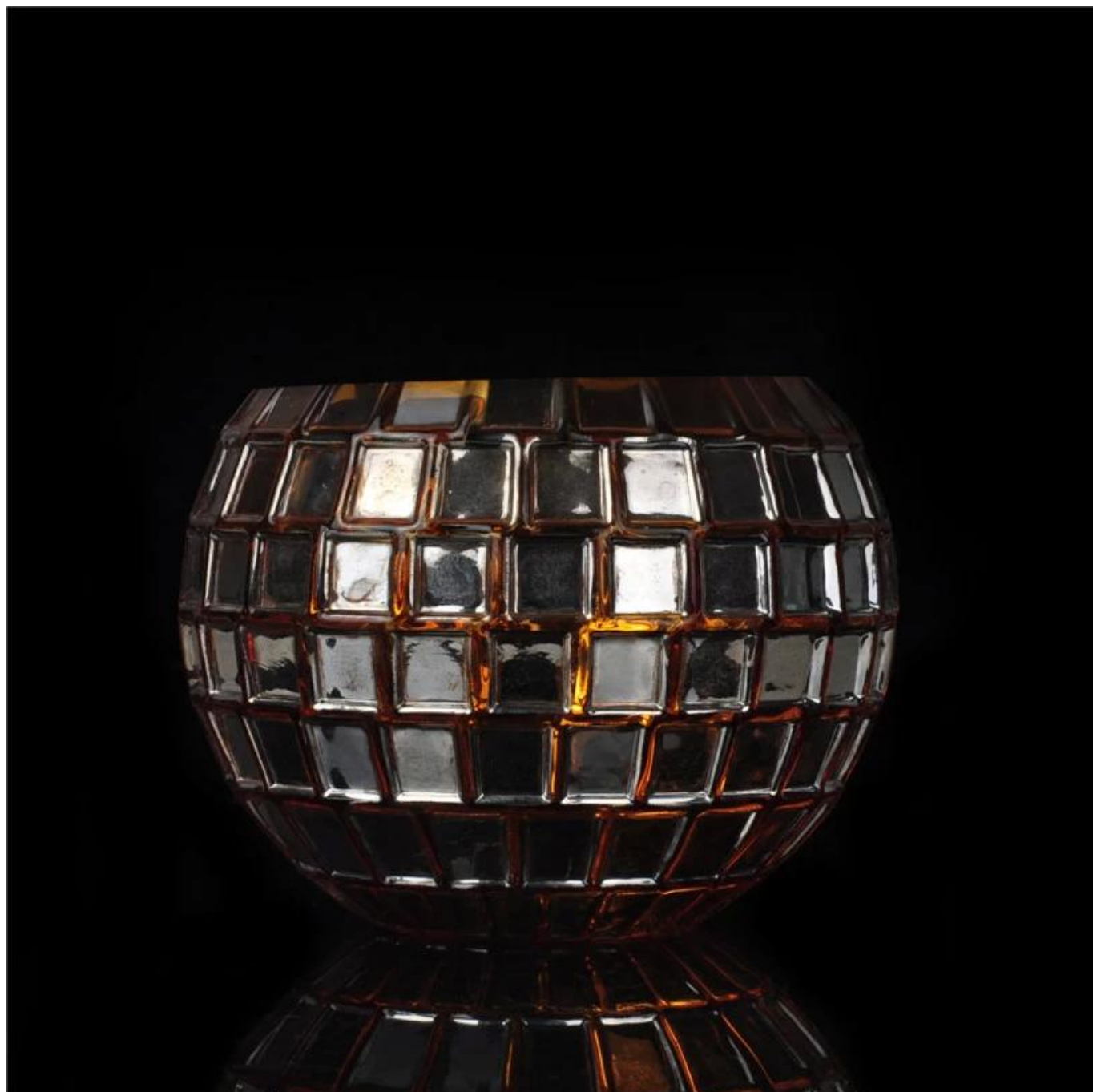
Product Details

Item number.	SGXH15113010
Material	soda lime glass
Handle	Handmade
Samples time	1. 5 days if there is a form and size of the glass 2. 15 days, if you need a new shape and size glass
Packaging	Normal safety packing
Product Capacity	100,000 pieces per month
Delivery time	Within 35 days after the sample and order confirmed
Terms of payment	30% deposit by T / T in advance and balance against copy of B / L
Shipment	By sea, by air, by express and the delivery agent acceptable
Product Features	1. Machine made glass candle holder from high quality 2. Suitable for use in hotel, house, etc. 3. Eco-friendly 4. Meet FDA test & amp; amp; AMP; CA 65 test
For your choice	1. Various designs and sizes for selection 2 Any color painted, cold, electroplating, laser model Processing cutter 3. Special package as shrink film, color gift box, white gift box, etc. 4. We are exclusive of employees for quality control 5. We have a professional workshop and warehouse for ensure delivery time

More Product Pictures









Similar Products Link



Office & Sample Room



Factory Show





Features months blown glass

1. The benefit, including the number of mold, machinery, surface effects, colors, etc.
2. Quality control is difficult and tolerance of size, weight and shape larger.
3. The price is high and the product is limited to a special technique of glass.

Mode of application

1. Use it under the guidance of an adult
2. Washing it with pure or boiling water prior to use
3. No touching the rim of a glass cup, try to take the bottom or handle it

Precautionary measures

1. Beer, red wine, white wine, drinks or hot water will not be crowded
2. To avoid hurting your children by the hand, please put it in a place where they can not reach
3. Do not drop, collision and strong influence
4. Do not microwave
5. To prevent cracking, do not put it directly over an open fire

For more [candle holder](#) or any glassware,

please visit our website: <http://www.okcandle.com/>

Or, can help you learn more about us: [Frequently asked Questions](#)