



Product detail:

| | |
|------------------|--|
| Item No. | SGDS14122927 |
| Material | Borosilicate glass |
| Craft | Handmade |
| Samples time | 1. 5 days if at exit shaped and size of glass 2. 15 days if need new shape or size of glass |
| Packing | Normal packing, 24 or 36pcs into export carton, carton with cardboard divider |
| Product Capacity | 500,000~1,000,000 pcs per month |
| Delivery time | Within 35 days after the sample and order confirmed |
| Payment terms | 30% deposit by T/T in advance and the balance against the copy of B/L |
| Shipment | By sea, by air, by Express and your shipping agent is acceptable |
| Product Features | <ol style="list-style-type: none">1. Suitable for used in pub, hotel, restaurants, home, etc2. Professional Q/C for quality control3. Competitive price and quality4. Meet FDA test and food grade |
| For your choices | <ol style="list-style-type: none">1. Any logo printing on the glass body2. Any color painted, frost, electroplate, pattern laser carver for the finish3. Special package like shrink wrap, color gift box, white gift box etc4. Open new mould for the glass, wood, plastic or metal as you like5. Different size and shapes meet your needs |



Product show:



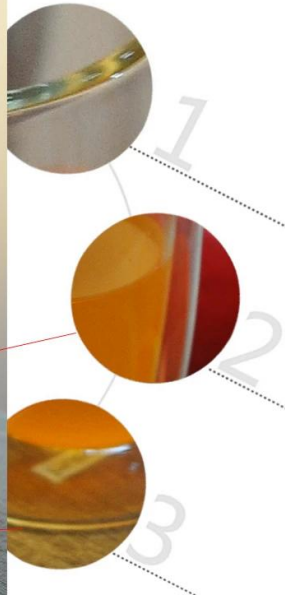




Borosilicate glass



Related products:



New borosilicate double wall glass drinking glass



borosilicate single wall glass



Company show:





Certification:



FDA, LFGB



About us:





Method of application:

1. Using it under guide of the adult.
2. Washing it with clean or boiling water before usage.
3. No touching the rim of glass cup,try to take the bottom or the handle of it.

Cautions:

1. Beer, red wine, white wine, beverage or hot water not be too full.
2. To avoid to hurt your children's hand, please put it in the place where they can't reach.
3. Avoid dropping ,Collision and strong impact.
4. Not available for microwave oven.
5. To prevent it from cracking, do not put it over open fire directly.

FAQ

For more information,please visit our website: www.okcandle.com