

Color bottom concrete candle holder in different size



Products Details

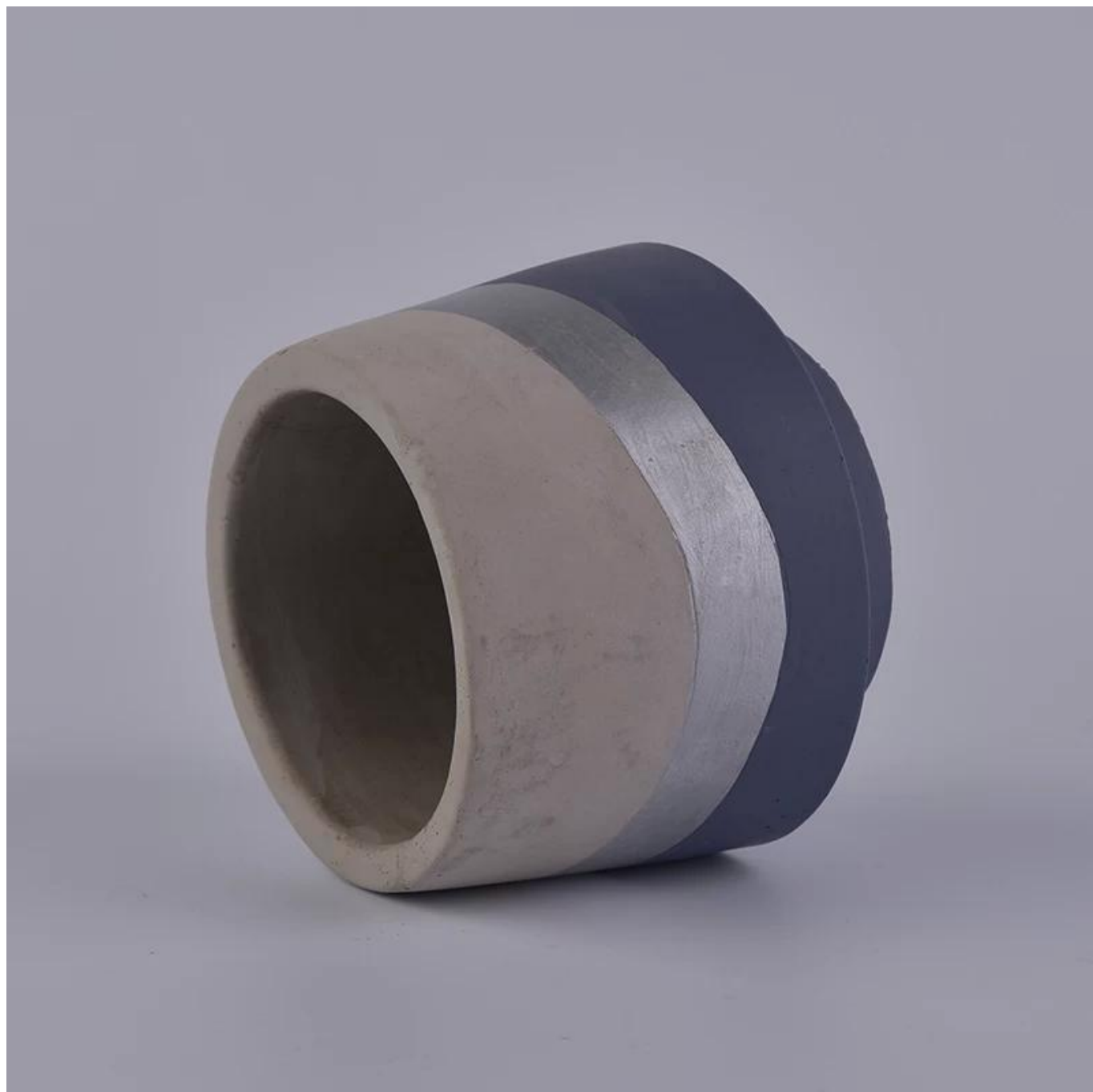
Name	Color bottom concrete candle holder in different size
Item Details	Item No.:SGYC18012502 Top dia: 90.5mm Bottom dia: 73.5mm Max dia: 106 Height: 88.6mm Weight: 410g Capacity: 400ml
Material	Concrete
Accessories	cap, ceramic / metal / wood lid, wax, wick, shear, etc.

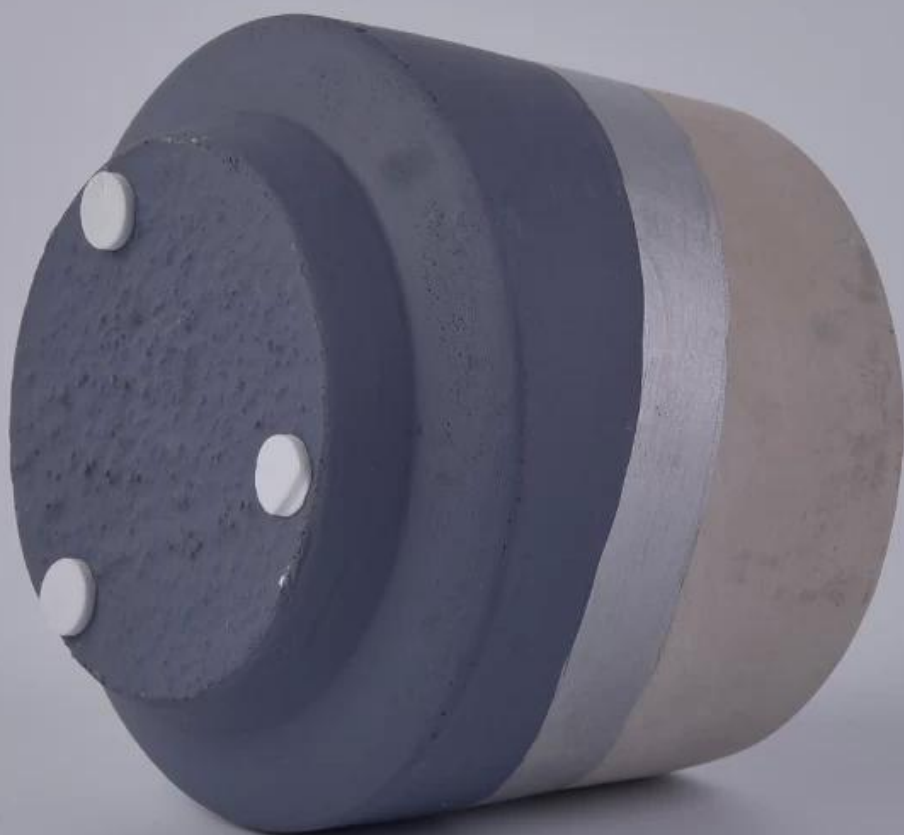
Finish	decal, color coating, mercury, laser, frosted, plating, glazed etc.
Packing	1. 24/36/48/72 pcs per standard export packing carton 2. Color / white / brown box packing 3. Luxury gift box packing 4. Shrinking packing Individual / set box packing Customized packing
Our strength	<p>We are the professional candle holder manufacturer, major in different kinds of candle holders ranging from glass candle holder, ceramic candle holder, marble candle holder, Concrete candle holder, Tin candle holder, Stainless candle jar etc.</p> 2. Perfect for home / store / super market / restaurant / hotel / bar / KTV etc. 3. With professional designer team, which can help design and open new mold based on your requirement. 4. Post processing: color coating, plating, mercury, iridescent, engraving, printing, decal, spray color, frosty, gold plating, hand-drawing etc. 5. Small MOQ is acceptable. We have regular products for supporting you.
Our service	<ul style="list-style-type: none"> * Reply you within 24 hours * Ranges of products for your selections * Completely production system * Skilled factory workers * Both machine line and handmade line for your service <p>Experienced QC team inspect the products comprehensively and strictly according to AQL standard</p> <ul style="list-style-type: none"> * Creative designer innovate newly products over 15 styles monthly * Professional Logistic department supply to door service
MOQ	1000pcs



More Product Pictures













Red
S16030-127 12.5×12.5×12.0cm
S16030-102 10.0×10.0×10.0cm



Black



Deep Blue



S16017-130 13.5×13.5×13.0cm
A



B



C



D



E



F



CS10024A-1 14x14x26cm
CS10024B-1 11x11x20cm



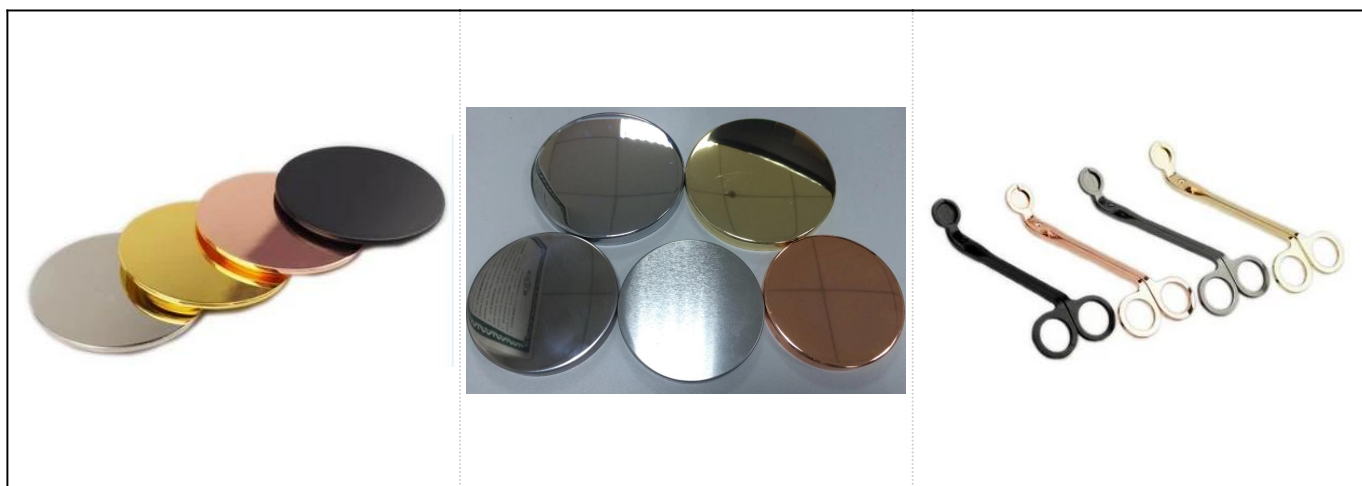
CS10025A-4 20.5x20.5x19.5cm
CS10025B-4 17.5x17.5x16.5cm
CS10025C-4 14.5x14.5x14cm
CS10025D-4 11.5x11.5x10.5cm
CS10025E-4 8x8x7cm



CS10026A-2 20x20x12.5cm
CS10026B-2 17x17x10cm
CS10026C-2 14x14x9cm



Matched accessories:





Office & Sample Room

Sunny Glassware is a leading candle holders supplier in China since 1992, our glass / ceramic / concrete candle jars etc. and matched accessories

mainly export to USA, EU, AU over more than 24 years experience. We're strictly with the quality, our QC team inspect the products

from raw material to production then to packing step by step, the inspection strictly according to the AQL standard.

Our service as following:

- Different shapes and sizes available, also welcome your own design.
- Accessories: cap, glass / metal / wood lid, wax etc.
- Decoration: decal, color coating, mercury, laser, frosted, plating etc.
- Packing: normal safety packing, color / white / gift box packing, characterized packing available.
- Design power: more than 15 innovations monthly.
- QC team: over 10 professional staffs inspect the production strictly and comprehensively, which meet AQL standard.
- Sample: within 7 days
- Certification: ASTM, 100% lead & cadmium free.

Our Facotry:



Production:



1
Office
in Shenzhen

2 Contact
Service Teams

+86-755-25643415

+86-755-25431456

frank@sunnyglassware.com

<http://www.okcandle.com>
<http://www.sunnyglassware.com>



Foresight **The ways**
to Get New Items



3
Trade Show

Our Relative OEM Service:



—To be your **Reliable**
Supplier



Our Showroom:

Sample Room



4,000+ Items for Choice



Certificate:



Contact me:

For more [concrete candle holder](#) or any glassware,
please visit our website: <http://www.okcandle.com/>
Or, can help you learn more about us: [FAQ](#)